

# Celino

TPS680/ 682

Mounting instruction 安装说明

TPS680-M-00a



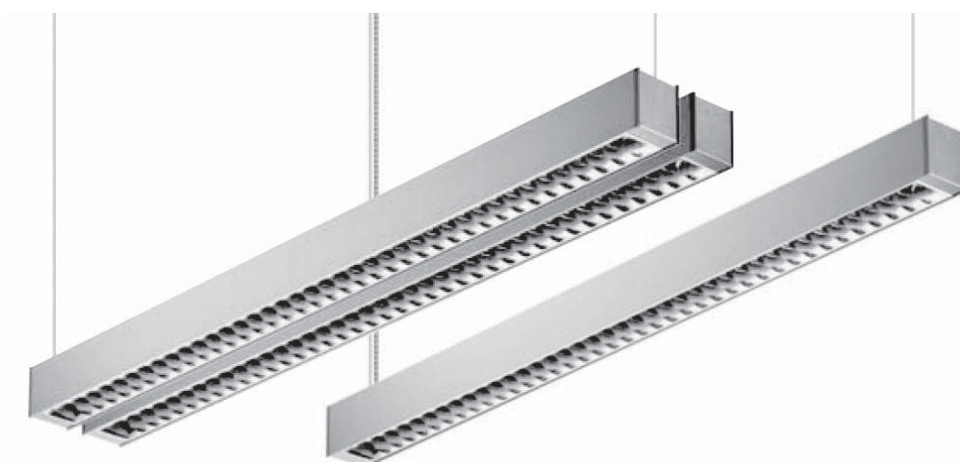
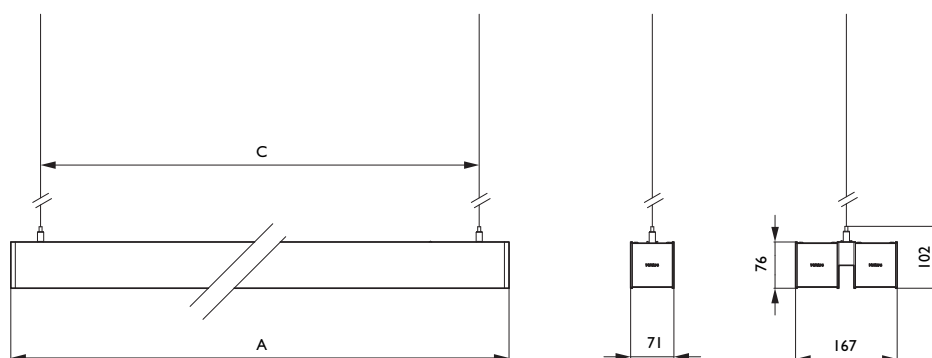
IP20



CB

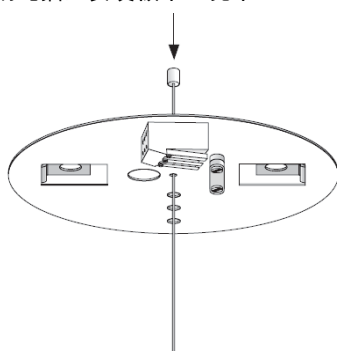
ta  
25°

	A (mm)	C (mm)		Weight/ 重量(Kg)	
		1 lamp/ 1灯	2 lamps/ 2灯	1 lamp/ 1灯	2 lamps/ 2灯
28W/ 54W	1220	1120	808	3.2	6.7
35W/ 49W/ 80W	1520	1420	1108	4	8.3



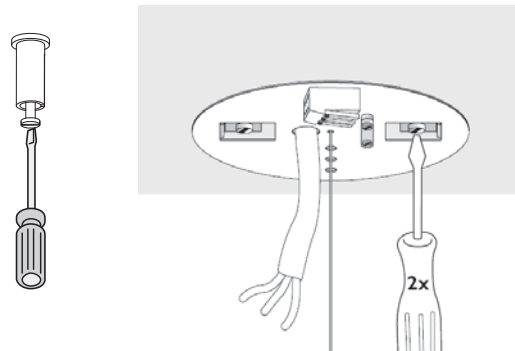
1

Insert suspension string into center hole of cover plate  
将悬吊钢绳插入安装板中心孔中



2

Fix top string holder and cover plate in ceiling with screws  
把天花板吊绳座和安装板通过螺丝固定于天花板上

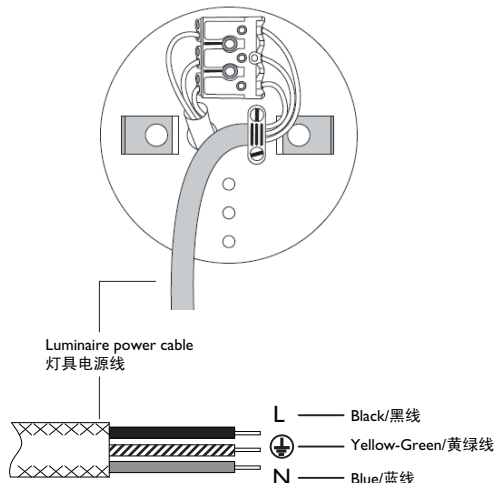


Philips Lighting Luminaires (Shanghai) Co., Ltd.  
Address: No. 2688, Huyi Road, Jiading, Shanghai, China  
Postalcode: 201801

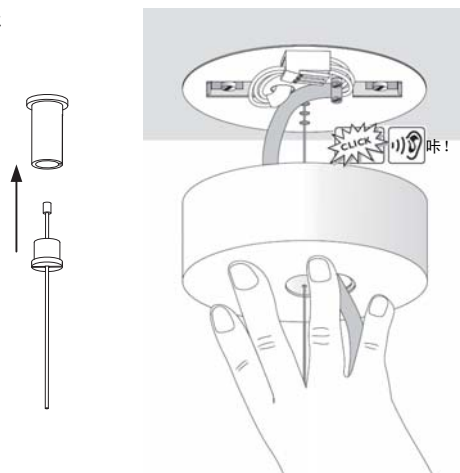
飞利浦灯具(上海)有限公司  
地址: 中国上海市嘉定区马陆镇沪宜公路2688号  
邮编: 201801

# PHILIPS

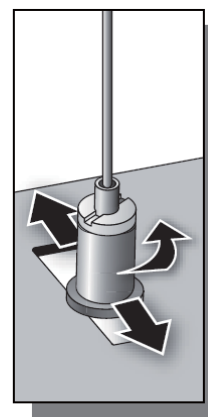
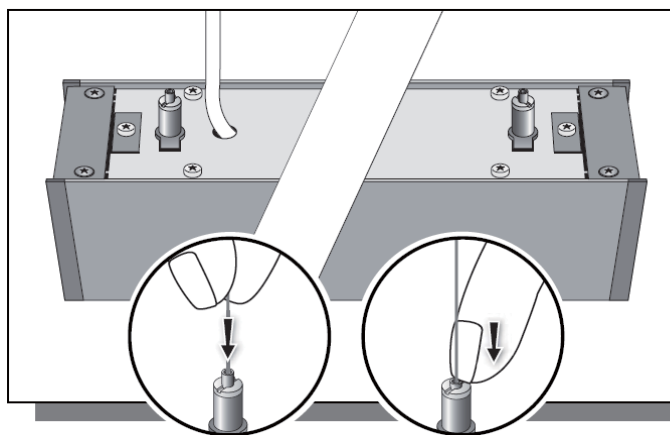
**3** Connect wires (Take care of poles)  
接线(注意保证极性正确)



**4** Insert steel string into top holder cap and wrest cap into holder body, push ceiling cap to match cover plate  
把钢绳穿入天花板吊绳座，拧紧吊绳安装座，推上接线盒盖

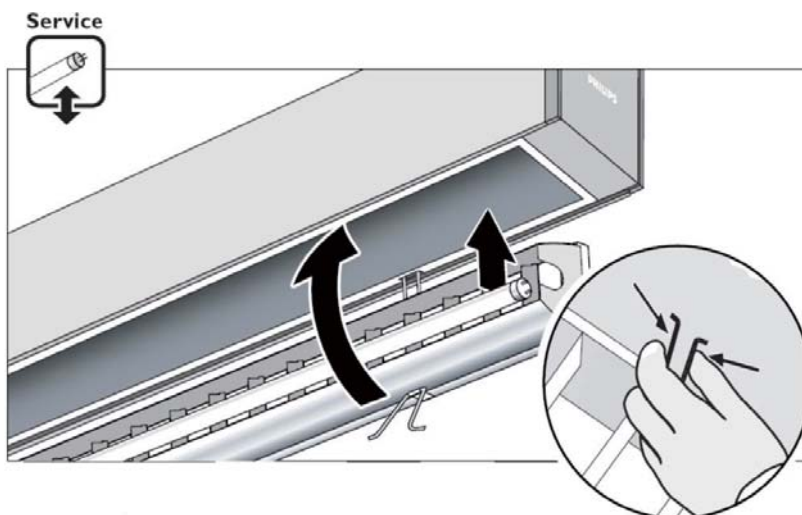


**5** Insert suspension string into string holder, press holder head to adjust hanging length.  
将钢绳插入吊绳安装座，按下吊绳安装座头部调整悬吊长度。



Adjust string holder  
position as detailed need  
依据需要调整吊绳安装  
座的位置

**6** Press V clip to uninstall louver, install lamp, then install louver back. Gloves must be used when touching louver.  
按下V形卡扣，拆下格栅或天窗，安装光源，最后装回格栅或天窗。触碰格栅时必须使用手套。



1. The luminaire series should be installed by a qualified electrical workers, wire connection should comply with latest IEE and related national standard.  
本灯具系列应由有资格的电工安装，接线须遵守最新IEE和相关国家标准。
2. Please be aware of power must be cut off before you replace the lamp.  
更换光源之前请务必切断电源。
3. Indoor use only!  
仅限室内使用！