

PHILIPS

Philips Lighting Electronics (Shanghai) Co., Ltd.  
All rights reserved. No part is  
permitted without the written consent of the copyright owner.



A-A

A

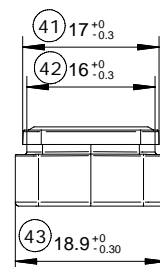
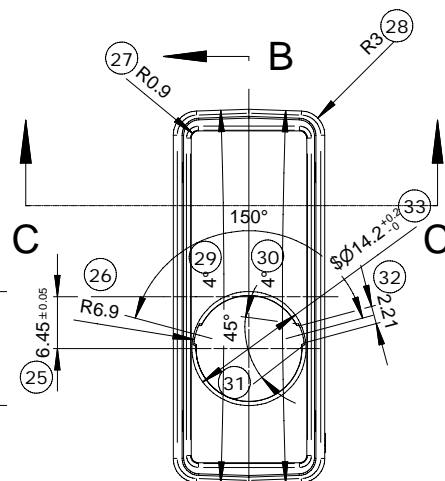
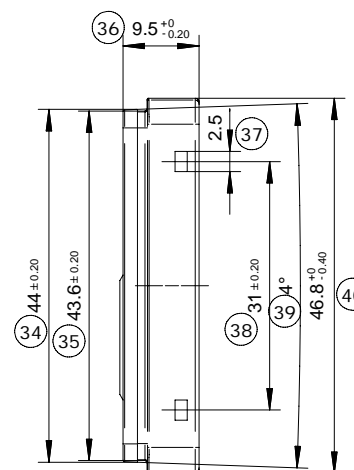
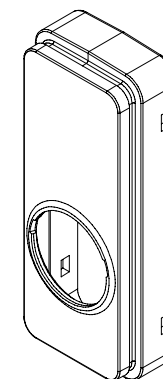
A

This flange to be rotated  
this position after assembly

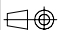
2011  
1-12

Parts List			
ITEM	QTY	PART NUMBER	DESCRIPTION
1	1	Spec_44224002786*-2	Shield-L
2	1	Spec_44224002786*-3	Shield-S
3	1	Spec_44224002786*-1	Cap

SIZE RANGE				TOLERANCE				UNIT			
0.5-3	>3-6	>6-30	>30-120	±0.1	±0.1	±0.2	±0.3	mm	mm	mm	mm
GENERAL ROUGHNESS	GB/T 1804-2000m (Unit: mm)										
✓	PPO, Noryl PX9406, UL94 V-0 Color: Light grey (Ral 7035)										
SCALE	PROJECT TYPE	TITLE: Cap Assembly							PART NUMBER: 4422 400 2786		
									1 2010/11/30 C 1 2011/1/12 D 1 2011/2/23 E		
REV. CHANGE NO.	DATE	DESIGNED BY: Yugui Xu							FORM NO. A3		
DRAWN BY	CHECKED BY	APPROVED BY							PHILIPS LIGHTING ELECTRONICS (SHANGHAI) CO., LTD		

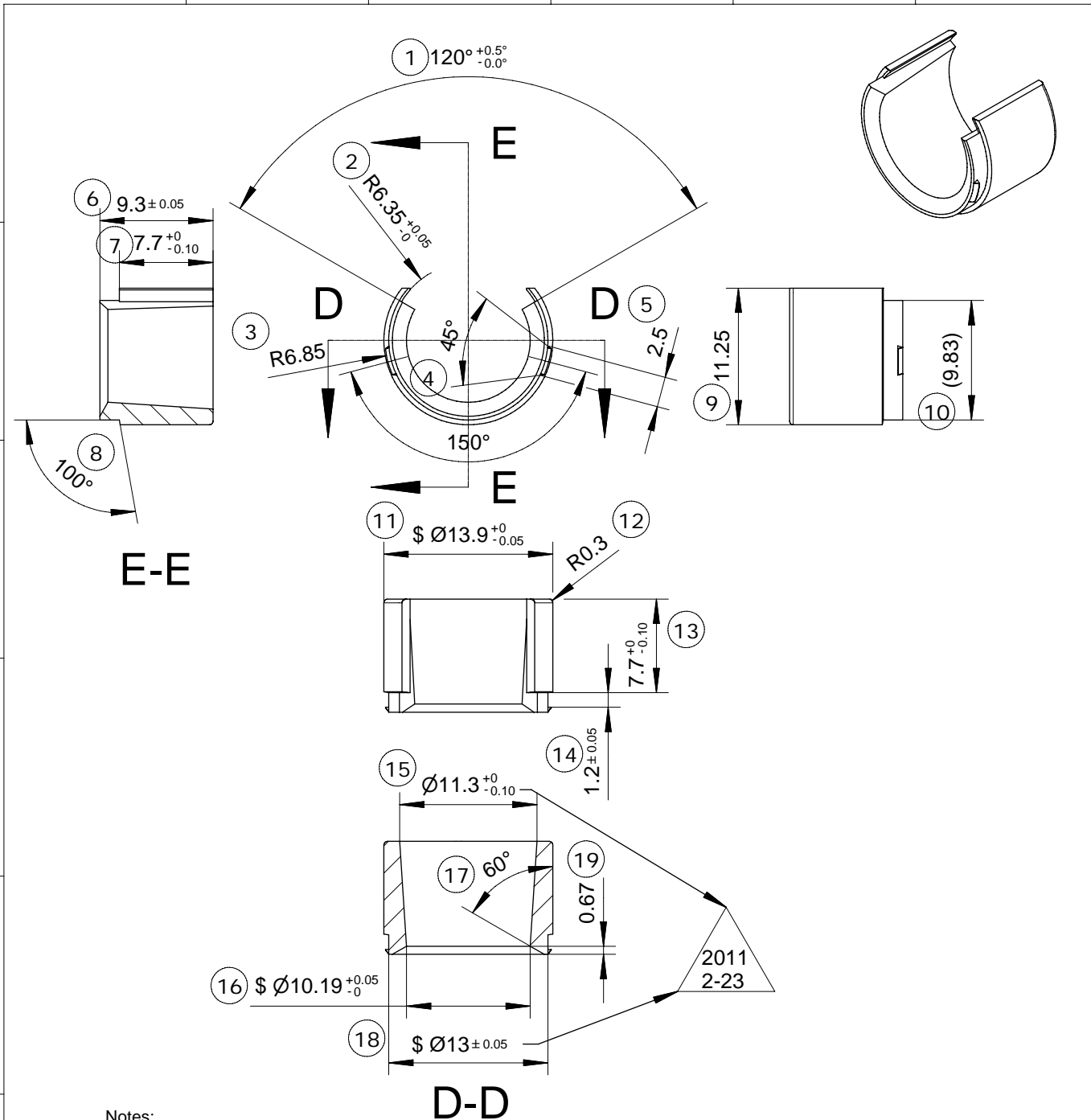
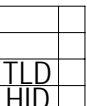


1. Dimensions on this drawing take precedence over 3D model.
2. Dimensions not specified to be according to 3D model.
3. Unless otherwise specified, general tolerance according to GB/T 1804-2000m.
4. Unspecified outside surfaces textured according to 9-420-UN-D249, inside surfaces according to 4-UN-D249.
5. Unspecified radii to be R0.1mm.
6. Unspecified draft angle to be 1°, and general angle tolerance  $\pm 0.5^\circ$ .
7. No visible sinkmark on the surface.
8. Flash and gate to be trimmed within 0.2mm of adjacent surface.
9. Regrinding not allowable.
10. Dimensions with "\$" are critical and to be inspected by IQC.
11. Matching part:
12. If possible, part number, cavity number and supplier code to be marked inside the surface in proper area.
13. Product must be RoHS compliant.

SIZE RANGE							0.5-3				GB/T 1804-2000m (Unit: mm)									
TOLERANCE							±0.1		>3-6 ±0.1		>6-30 ±0.2		>30-120 ±0.3		>120-400 ±0.5		>400-1000 ±0.8			
GENERAL ROUGHNESS							UNIT		PPO, Noryl PX9406, UL94 V-0 Color: Light grey (Ral7035)		ITEM		ASSEMBLY NO.		QUANT.					
✓							mm				MODEL NAME									
											ActiLume Lum Based Ext. sensor									
SCALE							PROJECT TYPE				ORDER NO.		QUANT.							
1.5:1																				
									TITLE:  Cap		PART NUMBER:  4422 400 2786*-1		1		2010/11/30 C					
													1		2011/1/12 D					
													1		2011/2/23 E					
REV. CHANGE NO.							DATE													
DESIGNED BY							Yugui Xu		CHECKED BY		4		SH.		SH. 110 of 2		FORM NO.		A3	
DRAWN BY									APPROVED BY		REVISED BY		PHILIPS LIGHTING ELECTRONICS (SHANGHAI) CO., LTD							

PHILIPS

Philips Lighting Electronics (Shanghai) Co., Ltd.  
All rights are reserved. Reproduction in whole or in part is  
prohibited without the written consent of the copyright owner.

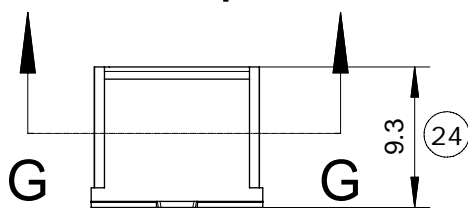


Notes:

1. Dimensions on this drawing take precedence over 3D model.
2. Dimensions not specified to be according to 3D model.
3. Unless otherwise specified, general tolerance according to GB/T 1804-2000m.
4. Unspecified outside surfaces textured according to 9-420-UN-D249, inside surfaces according to 4-UN-D249.
5. Unspecified radii to be R0.1mm.
6. Unspecified draft angle to be 1°, and general angle tolerance  $\pm 0.5^\circ$ .
7. No visible sinkmark on the surface.
8. Flash and gate to be trimmed within 0.2mm of adjacent surface.
9. Regrinding not allowable.
10. Dimensions with "\$" are critical and to be inspected by IQC.
11. Matching part:
12. If possible, part number, cavity number and supplier code to be marked inside the surface in proper area.
13. Product must be RoHS compliant.

GB/T 1804-2000m (Unit: mm)								
SIZE RANGE	0.5-3	>3-6	>6-30	>30-120	>120-400	>400-1000	ITEM	ASSEMBLY NO.
TOLERANCE	$\pm 0.1$	$\pm 0.1$	$\pm 0.2$	$\pm 0.3$	$\pm 0.5$	$\pm 0.8$		QUANT.
GENERAL ROUGHNESS	✓	PPO, Noryl PX9406, UL94 V-0 Color: Ultra light grey (Ral7035)						MODEL NAME
UNIT	mm							ActiLume Lum Based Ext. sensor
SCALE								ORDER NO.
PROJECT TYPE								QUANT.
TREATMENT								
TITLE:							PART NUMBER:	
Shield-Large							4422 400 2786*-2	
REV. CHANGE NO. DATE							1 2010/11/30 C	
							1 2011/1/12 D	
							1 2011/2/23 E	
DESIGNED BY Yugui Xu							SH. 110 of 3	
CHECKED BY							FORM NO.	
DRAWN BY							A4	
APPROVED BY							PHILIPS LIGHTING ELECTRONICS (SHANGHAI) CO., LTD	
REVISED BY								

TLD	
HID	



A horizontal number line with arrows at both ends. It is marked with integers from 1 to 6. There are also tick marks at the halfway points between each integer (e.g., 1.5, 2.5, etc.).