



**PHILIPS**  
**Day-Brite**  
**CFI**

Recessed

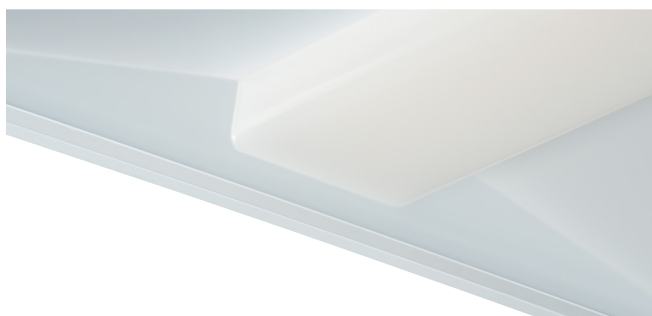
ClearAppeal

A wide-angle photograph of a modern office interior. The space features long wooden desks with white cubicle dividers, black ergonomic office chairs, and several square recessed ceiling lights. In the background, there is a glass-walled staircase and large windows. The overall atmosphere is bright and professional.

# No hassles, just right

The Philips Day-Brite / Philips CFI ClearAppeal LED recessed architectural offers a comfortable blend of reliable performance, elegant aesthetics and affordability to satisfy you and your customers. With surface models in 2x2 and 2x4 configurations, and recessed models in 2x2, 2x4, and 1x4 configurations with a range of options, it's easy to specify ClearAppeal for any application.

The elegant, streamlined design includes a single-piece extruded lens that creates uniform and glare-free light without pixilation, so occupants can enjoy a comfortable atmosphere. Highly efficient and long life LED technology helps to reduce energy-related costs, while dimming and optional sensors provide additional savings.



## ClearAppeal LED recessed architectural

- Achieve energy efficiency targets and reduce energy-related costs
- Further enhance energy and cost-savings goals with standard and optional controls
- Improved aesthetics and light distribution to minimize distractions
- Ease of maintenance and time savings
- Captive hinged door frame assembly for maintenance accessibility
- Reliable performance up to 110 LPW
- Standard 0-10V dimming and optional occupancy and daylight harvesting sensors
- Streamlined style
- Convenient luminaire access from below
- Lifetime of L70/50K conforming to TM21A guidelines
- Further enhance energy savings with SpaceWise integrated wireless control option



### Ordering guide

Example: 2CAG30L840-2-DS-UNV-DIM

Width	Family	Ceiling Type	Nominal Delivered Lumens	Color	Length	Center Diffuser	Voltage	Dimming	Options
<input type="text"/>	<input type="text"/>	<input type="text"/>	<input type="text"/>	<input type="text"/> - <input type="text"/>	<input type="text"/> - <input type="text"/>	<input type="text"/>	<input type="text"/> - <input type="text"/>	<input type="text"/> - <input type="text"/>	<input type="text"/>
1 1'	CA ClearAppeal	G Grid	<b>1x4</b>	<b>830</b> 80 CRI, 3000K	2 2'	DS Diffuse (smooth)	UNV Universal Voltage, 120-277 volt	<b>DIM</b> 0-10V dimming (control leads factory installed and extended to access plate)	<b>F1</b> 3/8" flex, 3 wire 18 gauge
2 2'		F' Flange	<b>30L</b> 3000 lumens (30.4W)	<b>835</b> 80 CRI, 3500K	4 4'		<b>347</b> 347V	<b>SDIM</b> Step dimming to 40% input power	<b>F2</b> 3/8" flex, 4 wire 18 gauge
			<b>40L</b> 4000 lumens (41.7W)	<b>840</b> 80 CRI, 4000K				<b>L3D</b> Lutron Hi-lume A 1% dimming	<b>F1/D</b> 3/8" twin flex, 3 wire 18 gauge for dimmable luminaires.
			<b>2x2</b>	<b>850</b> 80 CRI, 5000K				<b>LDE</b> Lutron EcoSystem Series 5 5% dimming	<b>F2/SW</b> 3/8" single flex, 5 wire 18 gauge for dimmable luminaires.
			<b>30L</b> 3000 lumens (31.6W)					<b>LDEH</b> Lutron EcoSystem Series H 1% dimming	<b>GLR1</b> Fusing, fast blow
			<b>34L</b> 3400 lumens (36.8W)						<b>EMLED</b> Integral emergency battery pack (requires ballast enclosure on top of luminaire)
			<b>38L</b> 3800 lumens (41.6W)						<b>OCC</b> Integral sensor, occupancy
			<b>44L</b> 4400 lumens (45.7W)						<b>DAY</b> Integral sensor, daylighting
			<b>2x4</b>						<b>DAYOCC</b> Integral sensor, daylighting and occupancy
			<b>36L</b> 3600 lumens (32.8W)						<b>SWZG2</b> SpaceWise automated wireless technology for integrated occupancy and daylight harvesting
			<b>42L</b> 4200 lumens (40.1W)						<b>CHIC</b> Chicago Plenum
			<b>55L</b> 5500 lumens (51.3W)						
			<b>70L</b> 7000 lumens (69.2W)						

1. Flange option code not available on 1x4, use FMA14 flange kit.
2. Consult factory for SDIM option with 55L and 70L option codes.
3. Not available in all sizes/lumen packages. See spec sheets for full details.
4. Bodine BSL310, 1100 lm nominal.
5. SWZG2 option provides occupancy sensing suitable for rooms with multiple luminaires along with daylight harvesting with auto-calibration. See spec sheets for more information.
6. Must order SWZ-REMOTE SpaceWise handheld remote with each system order.

See individual spec sheets for accessories.



Surface models available in 2x2 and 2x4.  
See specification sheets online for ordering information.

ClearAppeal luminaires are Designlights Consortium® qualified. Please see the DLC QPL list for exact catalog numbers (<http://www.designlights.org/QPL>).



© 2016 Philips Lighting Holding B.V. All rights reserved.  
Philips reserves the right to make changes in specifications and/or to discontinue any product at any time without notice or obligation and will not be liable for any consequences resulting from the use of this publication.



Philips Lighting North America Corporation  
200 Franklin Square Drive, Somerset, NJ 08873  
Tel. 855-486-2216

Philips Lighting Canada Ltd.  
281 Hillmount Rd, Markham, ON, Canada L6C 2S3  
Tel. 800-668-9008