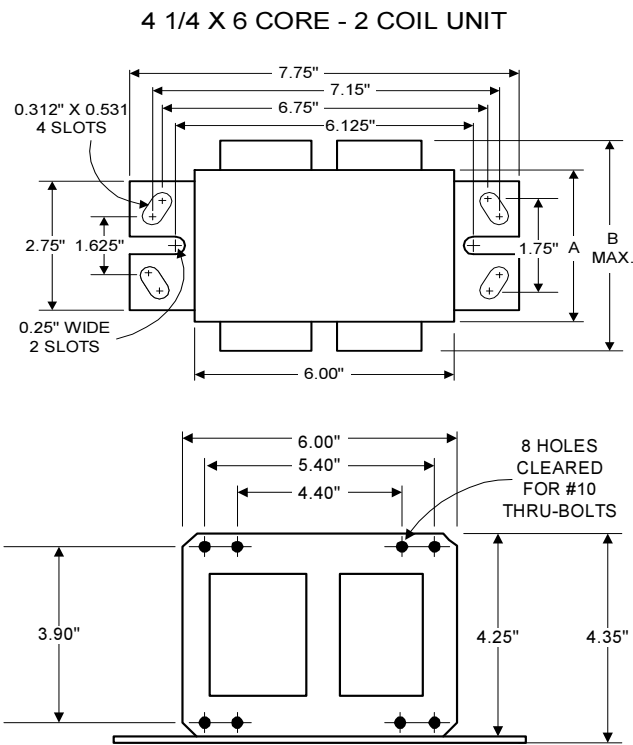


PHILIPS ADVANCE

Metal Halide Lamp Ballast

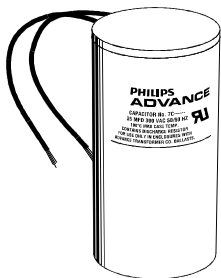
Catalog Number 71A6452
For 750W M149 (Pulse Start)
60 Hz SUPER-CWA
Status: Active

DIMENSIONS AND DATA



INPUT VOLTS	120	208	240	277	480
CIRCUIT TYPE	SUPER-CWA				
POWER FACTOR (min)	90%				
REGULATION					
Line Volts	±10%				
Lamp Watts	±10%				
LINE CURRENT (Amps)					
Operating.....	7.00	4.00	3.50	3.00	1.80
Open Circuit.....	3.30	2.00	1.80	1.70	0.80
Starting.....	6.60	3.80	3.30	2.80	1.65
UL TEMPERATURE RATINGS					
Insulation Class	H(180°C)				
Coil Temperature Code	1029				
MIN. AMBIENT STARTING TEMP.	-20°F or -30°C				
NOM. OPEN CIRCUIT VOLTAGE	355				
INPUT VOLTAGE AT LAMP DROPOUT.....	60	104	120	138	240
INPUT WATTS	818				
RECOMMENDED FUSE (Amps).....	20	10	10	8	5
CORE and COIL					
Dimension (A)	2.33				
Dimension (B)	4.25				
Weight (lbs.)	18				
Lead Lengths	12"				
CAPACITOR REQUIREMENT					
Microfarads	28.0				
Volts (min.)	400				
Fault Current Withstand (amps)					
60 Hz TEST PROCEDURES (Refer to Advance Test Procedure for HID Ballasts - Form 1270)					
High Potential Test (Volts)					
1 minute	2000				
2 seconds	2500				
Open Circuit Voltage Test (Volts)	320-390				
Short-Circuit Current Test (Amps)					
Secondary Current	5.00-6.00				
Input Current.....	5.00-7.50	2.90-4.30	2.50-3.80	2.10-3.25	1.25-1.90

Capacitor: 7C280S40



Capacitance: 28
Dia/Oval Dim: 2.00
Height: 4.8
Temp Rating: 105°C

Wiring Diagram:

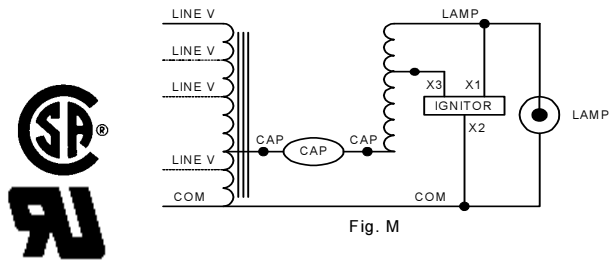
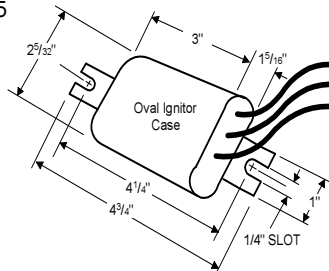


Fig. M

Ordering Information

Order Suffix	Description
--------------	-------------

Ignitor: LI573-H5



Ballast to Lamp Distance (BTL) = 15 feet
Temp Rating: 105°C

Data is based upon tests performed by Philips Lighting Electronic N.A. in a controlled environment and representative of relative performance. Actual performance can vary depending on operating conditions. Specifications are subject to change without notice.

Philips Lighting Electronic N.A.

10275 West Higgins Road · Rosemont, IL 60018 · Tel:800-322-2086 Fax:888-432-1882
Customer Support/ Technical Service:800-372-3331 · OEM Support: 866-915-5886

03/03/10