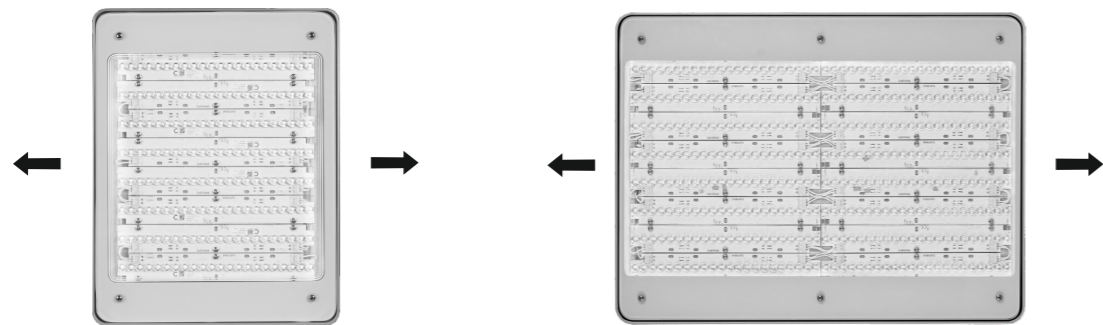


3

Aisle orientation for High Rack Optic



4

PSED version (Emergency Lighting)

	AC Lumen output	AC power [W]	DC Lumen output	DC power [W]
BY470P 130S	13000	106	2000	16
BY471P 170S	17000	134	2600	21
BY471P 250S	25000	200	3800	31

For emergency lighting is required DC power connection (220-240V DC)

Philips GentleSpace

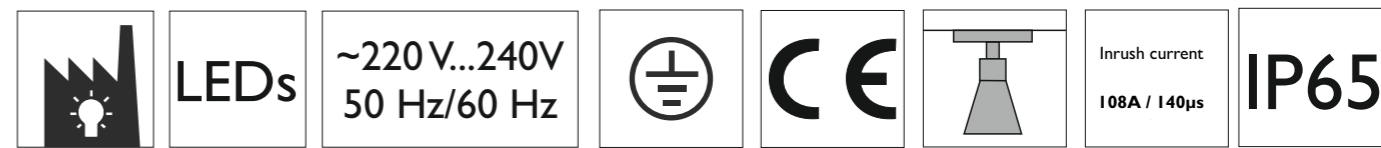
Mounting instructions

Instructions de montage
Montageanleitung
Montage instructie
Istruzioni di montaggio

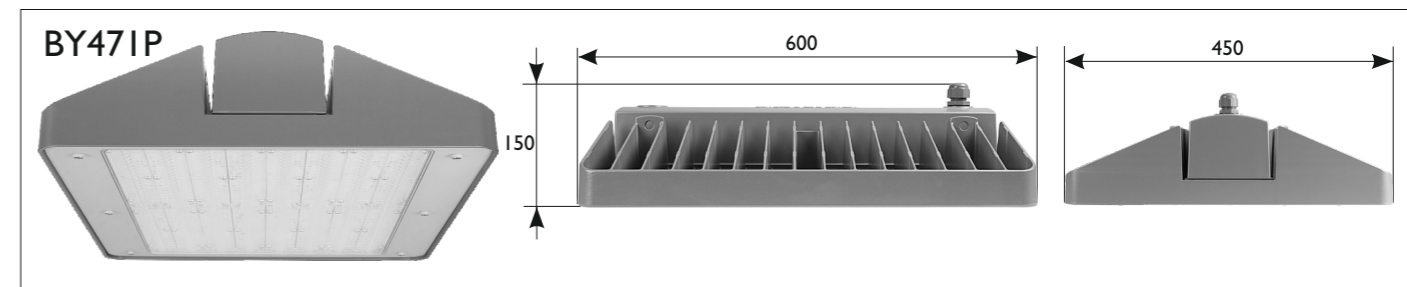
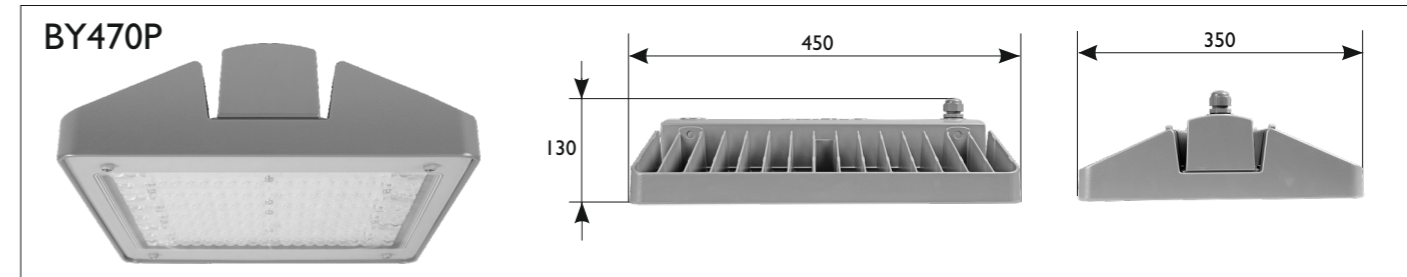
Instrucciones de montaje
Instruções de montagem
Monteringsinstruktioner
Monteringsvejledning

Kokoonpano- ja kiinnitysohjeet
Montaj yönergisi
Οδηγίες συναρμολόγησης
Instrukcja montażu

Szerelési utasítások
Návod k montáži
Инструкция по монтажу
Návod k montáži



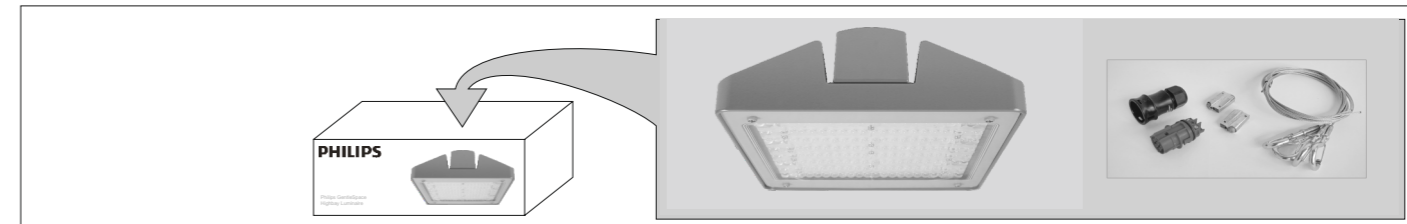
	LEDs	W	kg	IK 07	max	min	30	VDE BALL PROOF*	Maximum number of luminaire on MCB 16A	GreenWarehouse
BY470P 130S	176	106	9,3	●	45°C	-30°C	25cm	●	10	
BY471P 170S	264	134	15,2	●	45°C	-30°C	25cm	●	10	
BY471P 250S	352	200	15,6	●	45°C	-30°C	25cm	●	5	
BY470X 130S	176	108	9,8	●	45°C	-30°C	25cm	●	10	●
BY471X 170S	264	136	15,7	●	45°C	-30°C	25cm	●	10	●
BY471X 250S	352	205	16,1	●	45°C	-30°C	25cm	●	5	●
BY470P 130S BR	176	106	11,1	●	45°C	-30°C	25cm	●	10	
BY471P 170S BR	264	134	17,0	●	45°C	-30°C	25cm	●	10	
BY471P 250S BR	352	200	17,4	●	45°C	-30°C	25cm	●	5	
BY470X 130S BR	176	108	11,6	●	45°C	-30°C	25cm	●	10	●
BY471X 170S BR	264	136	17,5	●	45°C	-30°C	25cm	●	10	●
BY471X 250S BR	352	205	17,9	●	45°C	-30°C	25cm	●	5	●



Disconnect before servicing
Mettre hors tension avant intervention
Offnen nur spannungsfrei

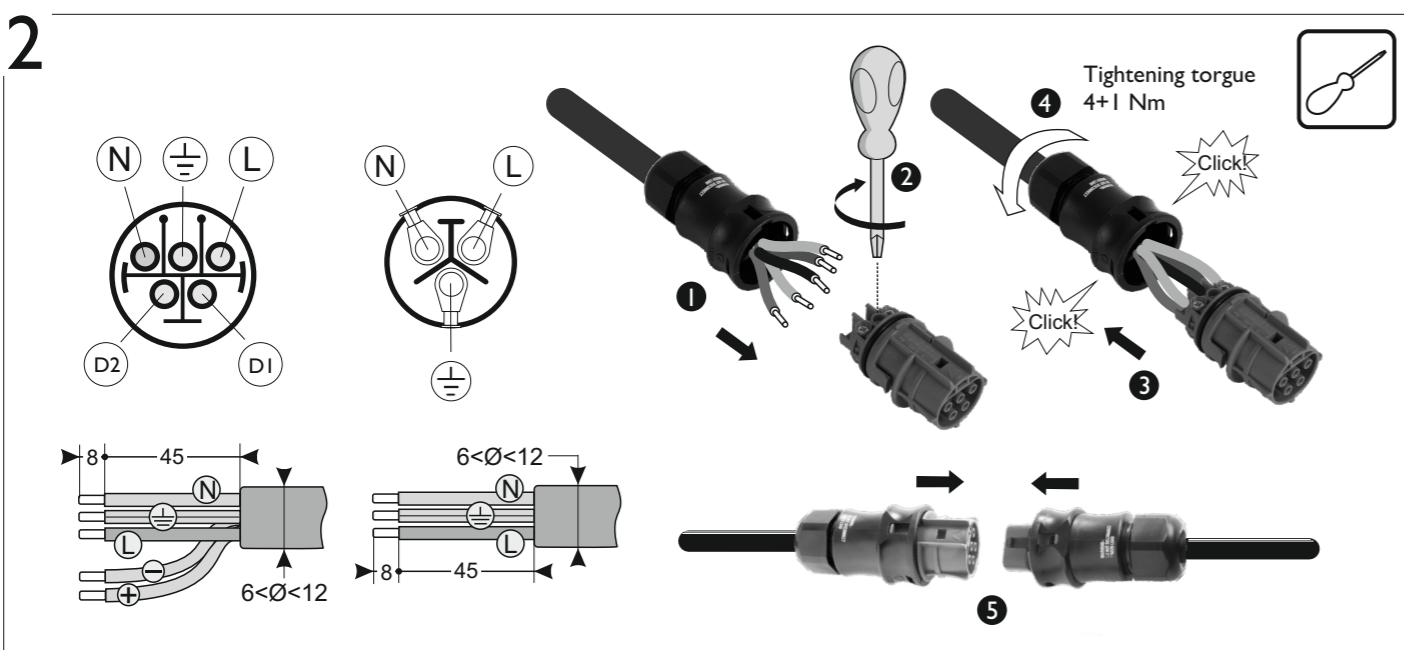
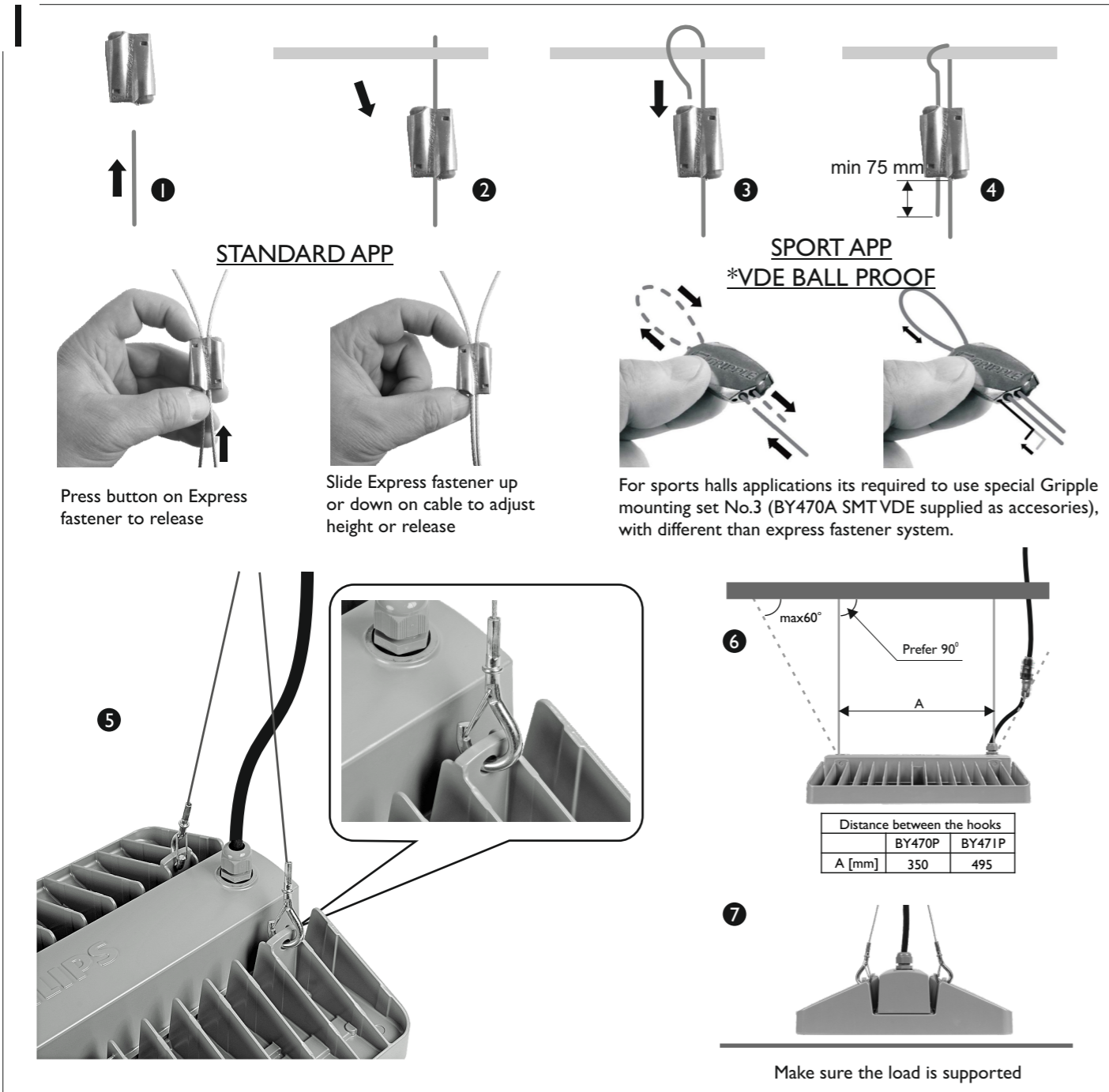
Demonteren voor onderhoud
Togliere tensione prima di fare manutenzione
Desconectar antes de manipular

Bryt strömmen före lampbyte



I2NC 4427 101 38245
Versiondate: 27/03/2015
Data subject to change without notice
Printed in Poland
www.philips.com/lighting





BY470Z MBA
BY471Z MBA

1,8 kg

SWP version
The angle of the luminaire position cannot be adjusted after fixation to avoid scratches on painted surface

