

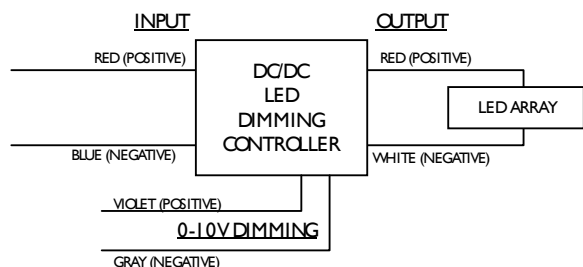
Electrical Specifications

9137 108 30902

Brand Name	XITANIUM
Description	DC/DC dimming
Input Voltage	12VDC or 24VDC
Input Frequency	N/A
RoHS	Yes
Status	Active

Max. Output Power (W)	Output Voltage (V)	Output Current (A)	Operating Temp. Range (°F/°C)	Input Current (A)	Max. Input Power (W)	Inrush Current (A _{pk} /μs)	Max. THD (%)	Min. Power Factor	Surge Protection (KV)	Weight (Lbs)	IP Rating
60	12	5.0	-40°~104°F (-40~40°C)	5.0	60	-	-	-	-	0.3/135	IP66
100	24	4.1		4.1	100	-	-	-	-		

Wiring Diagram



Input, Output and 0-10V Dimming use lead-wires.
Lead-wires are 18AWG 105C/600V solid copper
Standard Lead Length

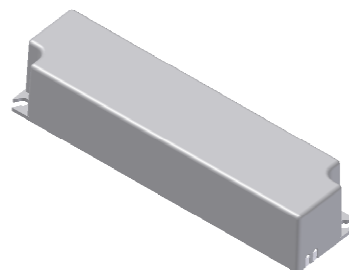
	in.	cm.
Black		
White	6	15
Blue	6	15
Red	6	15
Gray	6	15
Violet	6	15

Maximum Wiring Distance (at full load)

Wire Size (AWG)	24V/4.1A (feet)	12V/5.0A (feet)
26	1	1
24	2	2
22	4	3
20	6	5
18	9	8
16	14	12
14	23	20
12	35	30
10	60	51

Dimming Protocol	Dimming Range (%)	Dimming Mode
0-10V	100% ~ 0%	PWM 300Hz

Enclosure



	in. (mm)
Case Length	5.2 (132)
Case Width	1.3 (34)
Case Height	1.0 (25)
Mounting Length	4.8 (122.4)
Mounting Width	1.0 (24.8)
Overall Length	5.2 (132)



UL Class 2
E220165



7310_S-000
3426-32



Revised 05/23/2011

PHILIPS LIGHTING N.A.

10275 WEST HIGGINS ROAD • ROSEMONT, IL 60018
Tel: 800-322-2086 • Fax: 888-423-1882 • www.philips.com/advance
Customer Support/Technical Service: 800-372-3331 • OEM Support: 866-915-5886

9137 108 30902	
Brand Name	XITANIUM
Description	DC/DC dimming
Input Voltage	12VDC or 24VDC
Input Frequency	N/A
RoHS	Yes
Status	Active

Installation & Application Notes:

Section I – Physical Characteristics

- 1.1 LED Controller shall be installed inside an electrical enclosure.
- 1.2 Wiring inside electrical enclosure shall comply with 600V/105°C rating or higher.

Section II – Performance

- 2.1 LED Controller is UL Class 2 power unit as per UL1310. It is also listed in the UL Sign Accessory Manual (UL SAM).
- 2.2 LED Controller has Class A sound rating.
- 2.3 LED Controller tolerates sustained open circuit and short circuit output conditions without damage.
- 2.4 LED Controller complies with FCC rules and regulations, as per Title 47 CFR Part 15 Non-Consumer (Class A) for EMI/RFI (conducted and radiated) at full load.

Section III – UL Conditions of Acceptability (File E220165)

When installed in the end product, consideration shall be given to the following:

- 3.1 This component has been judged on the basis of the required spacing in the Standard for Class 2 Power Units, UL 1310, Fourth Edition, which would cover the component itself if submitted for Listing.
- 3.2 The equipment was submitted and tested for a maximum manufacturer's recommended ambient (T_{mra}) of 40°C.
- 3.3 The unit is intended for installation inside an electrical enclosure.
- 3.4 This unit is provided with a Class 105(A) insulation system. The unit may be used within an electrical enclosure or raceway without temperature test provided they are mounted not closer than 1 in. end to end or 4 in. side to side from adjacent LED power supplies.
- 3.5 The Xitanium Controller is only suitable for use in Class 2 circuits powered by Advance LED Drivers with maximum input rating of 24Vdc, 4.1A, or 12VDC, 5A. Dimmer circuit is 0-10VDC.
- 3.6 This LED Dimmer Controller must be used with either a 100K Ohms Potentiometer or a standard 0-10 V DC dimmer switch.
- 3.7 For dry or damp location.