

SmartBirght LED Batten
BN012C
Mounting Instruction

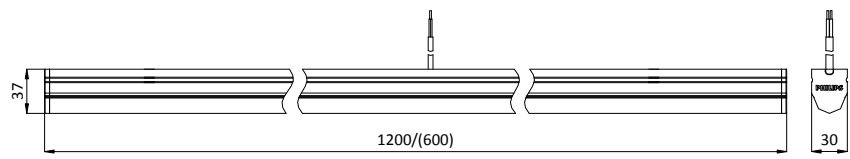
V1.0

AS/NZS
60598

IP20

$t_a 25^{\circ}\text{C}$

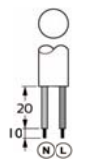
Product Type	Dimension (mm)	CCT (K)	Lumen Output (lm)	Power (W)	Voltage	Frequency	
BN012C LED20/NW L1200 AU	1200x30x37	4000	2000	21	220-240V ~	50/60Hz	0.29
BN012C LED20/CW L1200 AU	1200x30x37	6500	2000	21			0.29
BN012C LED10/NW L600 AU	600x30x37	4000	1000	11			0.19
BN012C LED10/CW L600 AU	600x30x37	6500	1000	11			0.19



Unit: mm

Supply Cord

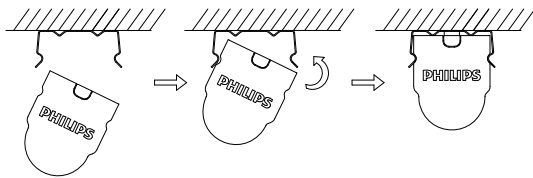
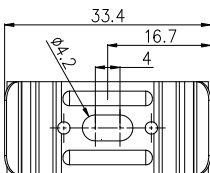
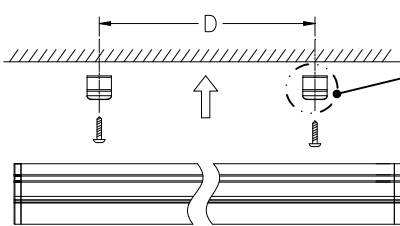
60227 IEC 52
60227 IEC 53
2x0.75mm²
N : blue
L : Brown



Please use IP20 or above terminal box (dimension can't smaller than 10x20x25), it is not provided by Philips.

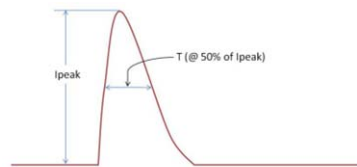
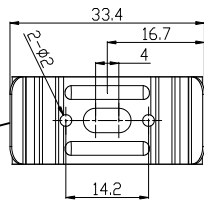
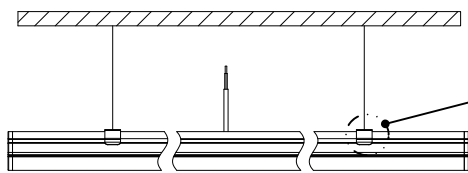
Surface Mounting

Installation on ceiling or wall through mounting clips.
(D: Mounting distance)



Type	L600	L1200
D (mm)	300-500	600-800

Suspended Mounting



Inrush Current		
	Ipeak	T (@ 50% of Ipeak)
21W	5.44A	35μs
11W	5.12A	31.5μs

Please read this manual carefully before using the product.

1. For indoor use only.
2. Do not switch on before complete installation.
3. The luminaire shall be installed by a qualified electrician and wired in accordance with the latest IEE electrical regulations or the national requirements.
4. The external flexible cable or cord of this luminaire cannot be replaced; if the cord is damaged, the luminaire shall be destroyed.
5. The light source of this luminaire is not replaceable; when the light source reaches its end of life the whole luminaire shall be replaced.
6. The luminaire is complied with AS/NZS 60598.
7. The luminaire's working environment requirements hydrogen sulphide less than 1 ppb.



This marking indicates that this product should not be disposed with other household wastes throughout the EU. To prevent possible harm to the environment or human health from uncontrolled waste disposal, recycle it responsibly to promote the sustainable reuse of material resources. To return your used device, please use the return and collection systems or contact the retailer where the product was purchased. They can take this product for environmental safe recycling.