

Vivara ZON Alluminium bollard

Installation instructions

Instructions de montage

Instrucciones de montaje

Kokoonpano- ja kiinnitysohjeet

Szerelési utasítások

Montageanleitung

Instruções de montagem

Montaj yönergeleri

Návod k montáži

Montage instructie

Monteringsinstruktioner

Οδηγίες συναρμολόγησης

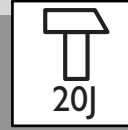
ИНСТРУКЦИЯ ПО МОНТАЖУ

Istruzioni di montaggio

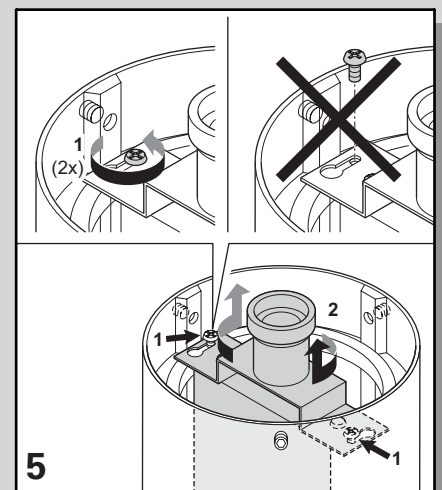
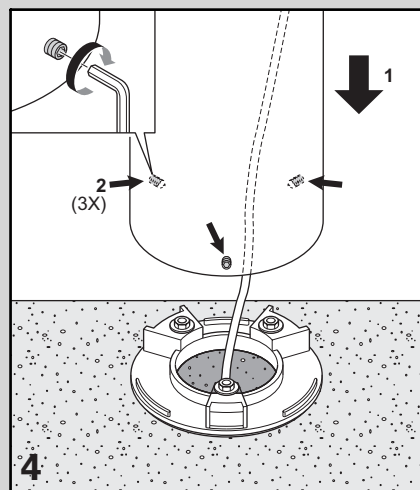
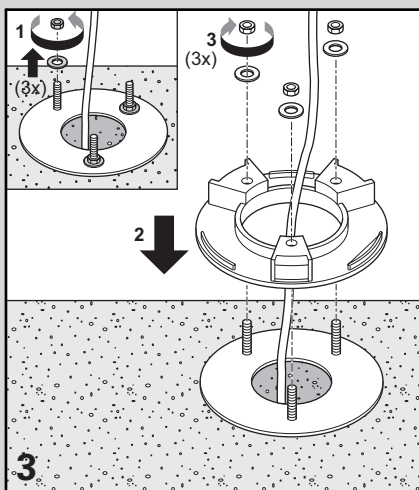
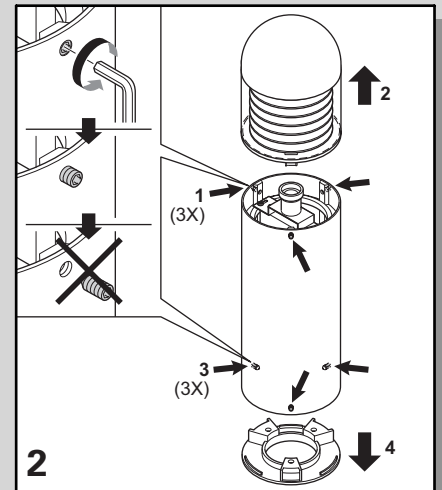
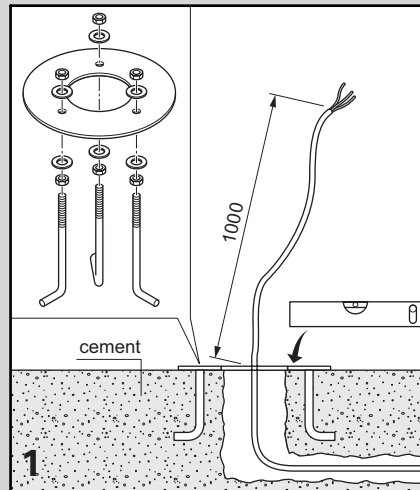
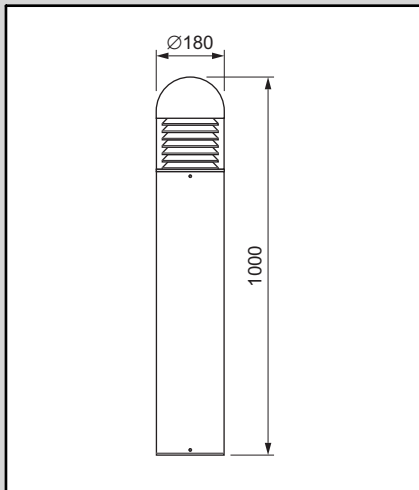
Monteringsvejledning

Instrukcja montażu

Návod k montáži

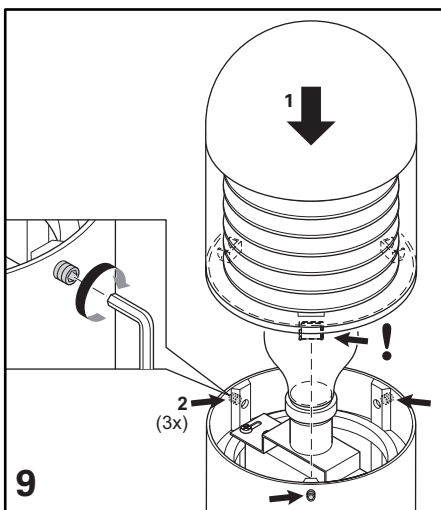
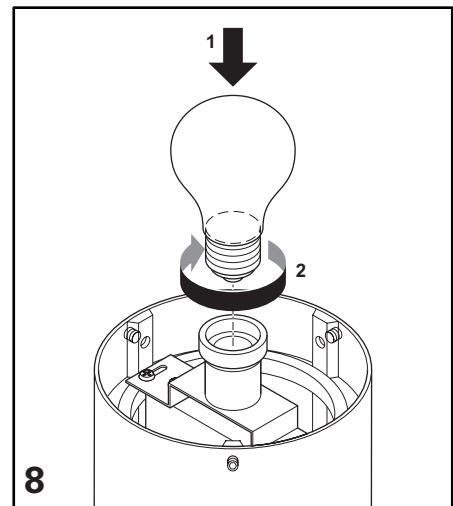
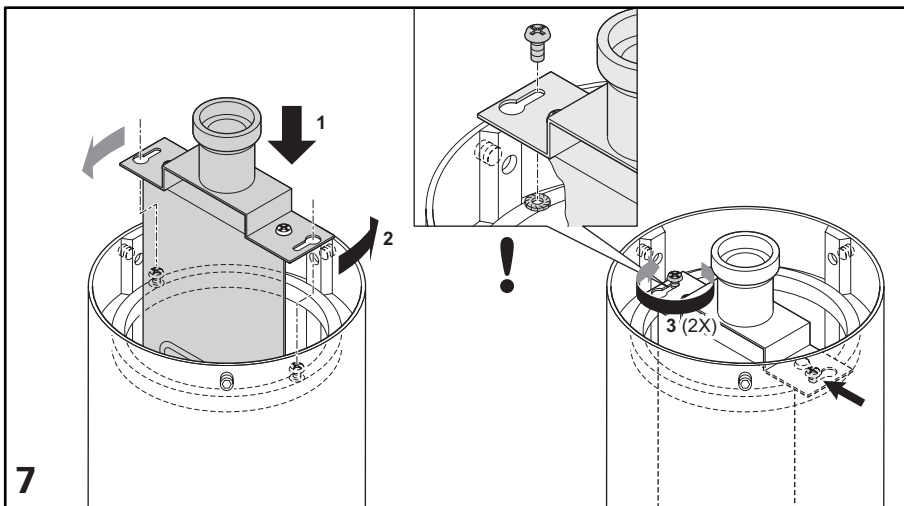
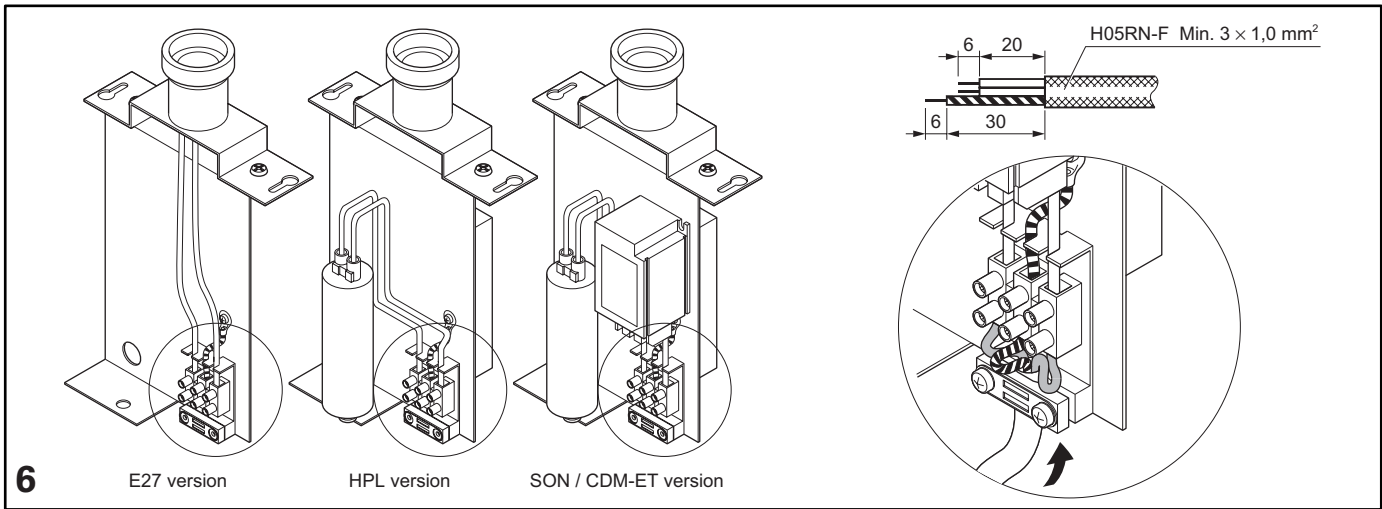



HCPI70 HPL-N80W 230/240V LO PCC	7.80	HPL-N 80 W	
HCPI70 SON/CDM-ET70W 230/240V LO PCC	7.80	SON 70 W / CDM-ET 70 W	
HCPI70 E27 MAXI100W LO PCC	6.60	GLS 100 W	
HCPI71 HPL-N80W 230/240V LO PCP	8.20	HPL-N 80 W	
HCPI71 SON/CDM-ET70W 230/240V LO PCP	8.20	SON 70 W / CDM-ET 70 W	
HCPI71 E27 MAXI100W LO PCP	7.00	GLS 100 W	



PHILIPS

Version date 01/03
Data subject to change





F - Débrancher l'appareil avant de changer la lampe.
UK - Disconnect the unit before changing the lamp.
D - Vor den Auswechseln der lampe die Leuchte von der Netzspannung trennen.
NL - Het apparaat uitschakelen alvorens de lamp te verwisselen.
I - Spegnerè l'apparecchio prima di sostituire la lampada.
SP - Desconecte el aparato antes de cambia la bombilla.
S - Apparatem Kapplas ifrån innan lampan byts.
FI - Kytke yksikko irti ennen lampun vaihtoa.
PL - Rozłączyc zespól przed wymianã lampy.
P - Desligar a aparelho antes de substituir a lampada.

For UK installations please re-tap ballast from 230V to 240V

