

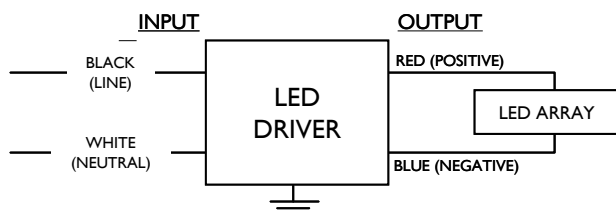
## Electrical Specifications

### LED277A0700C28FO

Brand Name	XITANIUM
Driver Type	Electronic
Input Voltage	277
Input Frequency	50/60Hz
RoHS	Yes
Approbations	UL,CSA
Status	Active

Max. Output Power (W)	Output Voltage (V)	Output Current (A)	Operating Temp. Range (°F/°C)	Input Current at 277V (A)	Max. Input Power (W)	Inrush Current (A <sub>pk</sub> /μs)	Max. THD (%)	Min. Power Factor	Surge Protection (KV)	Weight (Lbs)	Envir. Protection Rating
20	2.8~28.0	0.7	-40°~140°F (-40~60°C)	0.09	24	-	20	0.9	2.0	0.3/135	UL Dry & Damp

## Wiring Diagram



Input, Output and 0-10V Dimming use lead-wires.  
Lead-wires are 18AWG 105C/600V solid copper

## Standard Lead Length

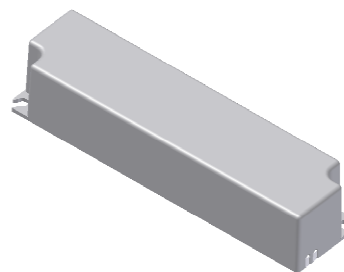
	in.	cm.
Black	6	15
White	6	15
Blue	6	15
Red	6	15
Gray		
Violet		

## Maximum Wiring Distance (at full load)

Wire Size (AWG)	Distance (feet)
26	8
24	13
22	21
20	34
18	54
16	85
14	137
12	210
10	357

Revised 05/16/2012

## Enclosure



	in. (mm)
Case Length	5.2 (132)
Case Width	1.3 (34)
Case Height	1.0 (25)
Mounting Length	4.8 (122.4)
Mounting Width	1.0 (24.8)
Overall Length	5.2 (132)



## PHILIPS LIGHTING ELECTRONICS N.A.

10275 WEST HIGGINS ROAD • ROSEMONT, IL 60018

Tel: 800-322-2086 • Fax: 888-423-1882 • [www.philips.com/advance](http://www.philips.com/advance)

Customer Support/Technical Service: 800-372-3331 • OEM Support: 866-915-5886

<b>LED277A0700C28FO</b>	
Brand Name	XITANIUM
Driver Type	Electronic
Input Voltage	277
Input Frequency	50/60Hz
RoHS	Yes
Approbations	UL,CSA
Status	Active

UL Class 2      7310\_S-000  
E220165      3426-32

## Installation & Application Notes:

### Section I – Physical Characteristics

- 1.1 LED Driver shall be installed inside an electrical enclosure.
- 1.2 Wiring inside electrical enclosure shall comply with 600V/105°C rating or higher.

### Section II – Performance

- 2.1 LED Driver is UL Class 2 power unit as per UL879 & UL1310. It is also listed in the UL Sign Accessory Manual.
- 2.2 LED Driver is certified by UL for use in a dry or damp location (Outdoor Type I).
- 2.3 LED Driver has Class A sound rating.
- 2.4 LED Driver tolerates sustained open circuit and short circuit output conditions without damage.
- 2.5 LED Driver maximum allowable case temperature is 90°C – see product label for measurement location.
- 2.6 LED Driver complies with FCC rules and regulations, as per Title 47 CFR Part 15 Non-Consumer (Class A).

### Section III – UL Conditions of Acceptability (File E220165)

When installed in the end product, consideration shall be given to the following:

- 3.1 This component has been judged in the basis of the required spacing in the standard for Electric Sign Component, UL 879, Eighth Edition, which would cover the component itself if submitted for Listing.
- 3.2 This unit is provided with a Class 105(a) insulation system.
- 3.3 The unit is intended for installation inside an electrical enclosure.
- 3.4 The unit was submitted and tested for a maximum manufacturer's recommended ambient (T<sub>mra</sub>) of 40°C. If adjacent LED power supplies are spaced closer than 1 in. end to end or 4 in. side to side a temperature test shall be conducted in the end use product.
- 3.5 The ground connection is not suitable as the equipment ground for a sign. Separate provision for sign grounding must be provided.

### Revision History:

Rev No.	Date	Description	Approval	Remarks
1.1	01/16/2012	*Add Envir. Protection Rating	N.T.	
1.2	03/02/2012	*Modify Part #(Remove Dashes)	N.T.	
1.3	05/16/2012	*Add Approbations: UL, CSA	N.T.	

Revised 05/16/2012