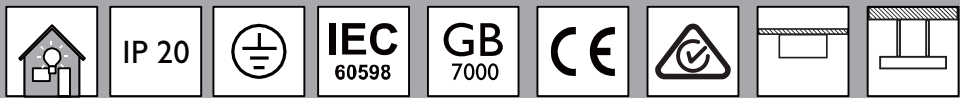


Office Lum/ LED 办公灯具

SMI00C

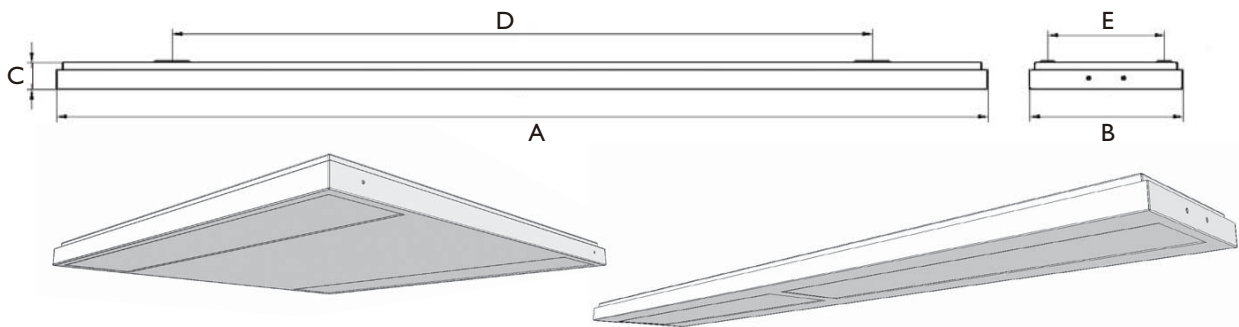
Mounting instruction 安装说明



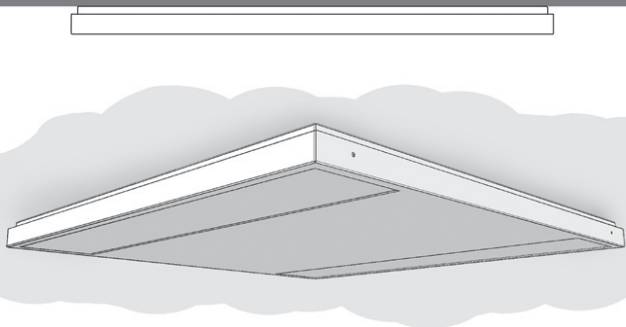
产品描述 Product Description	Pmax.(W)	A(mm)	B(mm)	C(mm)	D(mm)	E(mm)	kg
SMI00C/LED25S/W60L60	30	597	597	36	380	380	4.4
SMI00C/LED25S/W20L120	30	1197	197	36	900	150	3.7
SMI00C/LED35S/W60L60	40	597	597	36	380	380	4.4
SMI00C/LED35S/W20L120	40	1197	197	36	900	150	3.7

Suspension Kit Accessory SMI00Z SMS for suspension mounting. Kit to be purchased separately.

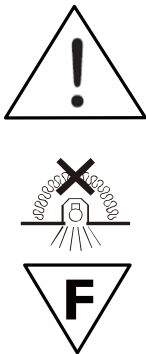
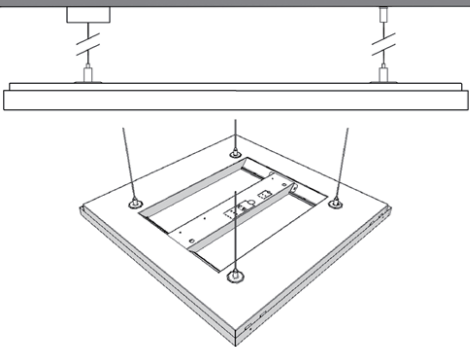
Appearance/外观



Surface Mounted/吸顶安装

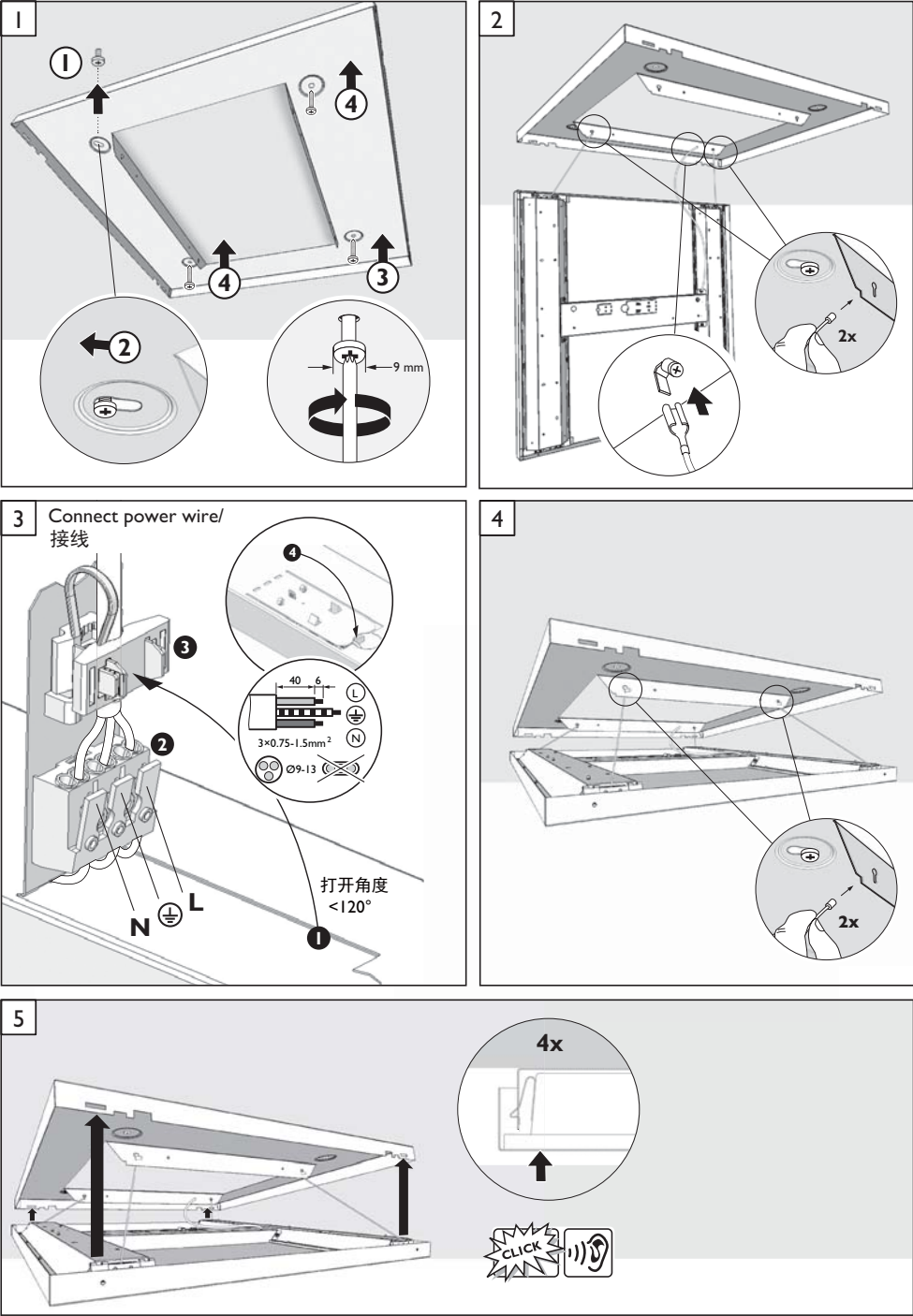


Suspension/悬吊安装



- 1、The luminaire shall be installed by a qualified electrician and wired in accordance with the latest IEE electrical regulations or the national requirements.
灯具应由有资格的电工安装，接线要符合 IEE 电气标准或国家标准。
- 2、Do not switch on before complete installation.
接线过程中，切勿通电。
- 3、The luminaire shall ,under no circumstance,be covered with insulation matting or similar material.
灯具不适合被隔热衬垫或类似材料覆盖。
- 4、The luminaire is suitable for direct mounting on normally flammable material.
灯具适合于直接安装在普通可燃材料表面。
- 5、Cannot remove the optical cover.
光源灯罩不可拆。
- 6、Do not replace the LED module.
LED 模块是不可更换的，请不要自行更换。

Surface Mounted/吸顶安装



Suspension/悬吊安装

