



Selenium LED – simple efficiency

Selenium LED

Selenium LED is a cost-effective road lighting LED luminaire, delivering significant energy saving compared with conventional solutions. Energy savings can be further enhanced with the range of integrated control options. Selenium LED delivers high quality neutral white light with excellent uniformity using Philips LEDGINE technology. Installation and maintenance is made simple using plug connectors and drivers that are directly accessible without the use of tools.

Benefits

- Simple and efficient LED road lighting solution
- Integrated DynaDimmer & RF telemanagement control options
- Easy installation and maintenance with reversible spigot and tool-less entry to luminaire

Features

- Philips LEDGINE based technology giving uniform light distribution over lifetime
- Integrated control options
- Flat glass; 0 candela light spill at 90°
- Traditional road luminaire design to complement existing lighting schemes at medium mounting heights

Application

- Motorised traffic routes & major roads
- Mixed traffic streets

Specifications

Type	BGP340
Light source	Integral LED module
Power (+/-10%)	29 to 94 W

Luminous flux	4810 to 9415 lm
Luminaire efficacy	>105 lm/W

Selenium LED

Correlated Colour Temperature	4000 K
Colour Rendering Index	70
Maintenance of lumen output - L80F10	60,000 hours
Operating temperature range	-40 to +50°C
Driver	Separate (non self ballasted LED-module)
Mains voltage	220-240 V / 50-60 Hz
Inrush current	80 A / 150 μS
Options	Photocell NEMA socket Integrated Dynadimmer Mains dimming RF antenna
Controls system input	1-10 V and DALI

Optic	Medium beam
Optical cover	Glass, flat
Material	Housing: die-casted aluminium Optical cover: glass, extra-white tempered, 5 mm thick
Colour	RAL7035 Other RAL colours available on request
Connection	Wieland
Maintenance	Tool-less clip
Installation	Post top mounting: Ø 60 / 76 mm Side entry mounting: Ø 34 / 60 mm Reversible spigot for side-entry and post-top Recommended mounting height: 5 to 12 m Standard tilt angle post top: 5° Adjustable tilt angle: 0°, 5° and 15° Max SCx: 0.077 m²

Versions

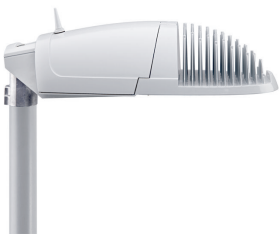
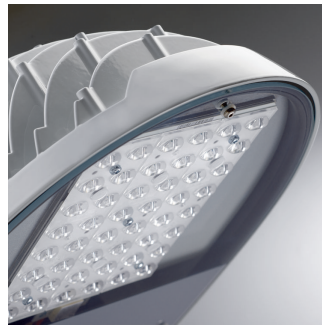
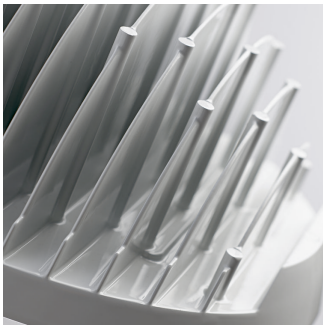
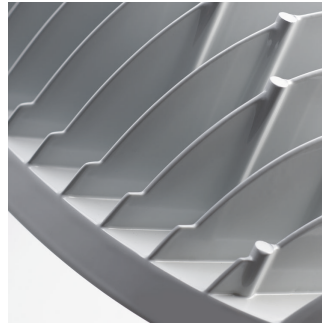
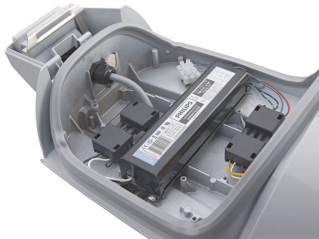


Product details



Selenium LED

Product details



Selenium LED

Approval and Application

Mech. impact protection code	IK08
Surge Protection (Common/Differential)	6/4 kV

General Information

Luminaire light beam spread	160°
CE mark	CE mark
Light source colour	740 neutral white
Optical cover/lens type	FG
Driver included	Yes
Flammability mark	NO
Glow-wire test	Temperature 960 °C, duration 5 s
Light source replaceable	Yes
Lamp version	3S
Number of gear units	1 unit
Number of light sources	1
Optic type	Distribution medium
Product Family Code	BGP340

Initial Performance (IEC Compliant)

Init. Corr. Colour Temperature	4000 K
Init. Colour Rendering Index	≥70

Light Technical

Standard tilt angle side entry	0°
Standard tilt angle posttop	0°
Upward light output ratio	0

Mechanical and Housing

Colour	Aluminium and Grey
--------	--------------------

Application Conditions

Order Code	Full Product Name	Maximum dim level
06343800	BGP340 LED55--3S/740 PSU I DM 48/60	-
06344500	BGP340 LED74--3S/740 PSU I DM 48/60	-
06345200	BGP340 LED92--3S/740 PSU I DM 48/60	-
06346900	BGP340 LED110--3S/740 PSU I DM 48/60	-
06370400	BGP340 LED92--3S/740 PSR I DM DDF1 48/60	10%
06371100	BGP340 LED110--3S/740 PSR I DM DDF1 48/6	10%
06378000	BGP340 LED55--3S/740 PSR I DM DDF2 48/60	10%
06379700	BGP340 LED74--3S/740 PSR I DM DDF2 48/60	10%
06380300	BGP340 LED92--3S/740 PSR I DM DDF2 48/60	10%
06381000	BGP340 LED110--3S/740 PSR I DM DDF2 48/6	10%
06388900	BGP340 LED55--3S/740 PSR I DM DDF3 48/60	10%
06391900	BGP340 LED110--3S/740 PSR I DM DDF3 48/6	10%
06434300	BGP340 LED37--3S/740 PSU II DM MSP 48/60	-
06435000	BGP340 LED55--3S/740 PSU II DM MSP 48/60	-

Controls and Dimming

Order Code	Full Product Name	Dimmable	Order Code	Full Product Name	Dimmable
06343800	BGP340 LED55--3S/740 PSU I DM 48/60	No	06379700	BGP340 LED74--3S/740 PSR I DM DDF2 48/60	Yes
06344500	BGP340 LED74--3S/740 PSU I DM 48/60	No	06380300	BGP340 LED92--3S/740 PSR I DM DDF2 48/60	Yes
06345200	BGP340 LED92--3S/740 PSU I DM 48/60	No	06381000	BGP340 LED110--3S/740 PSR I DM DDF2 48/6	Yes
06346900	BGP340 LED110--3S/740 PSU I DM 48/60	No	06388900	BGP340 LED55--3S/740 PSR I DM DDF3 48/60	Yes
06370400	BGP340 LED92--3S/740 PSR I DM DDF1 48/60	Yes	06391900	BGP340 LED110--3S/740 PSR I DM DDF3 48/6	Yes
06371100	BGP340 LED110--3S/740 PSR I DM DDF1 48/6	Yes	06434300	BGP340 LED37--3S/740 PSU II DM MSP 48/60	No
06378000	BGP340 LED55--3S/740 PSR I DM DDF2 48/60	Yes	06435000	BGP340 LED55--3S/740 PSU II DM MSP 48/60	No

General Information

Order Code	Full Product Name	Coating	Lamp family code	Order Code	Full Product Name	Coating	Lamp family code
06343800	BGP340 LED55--3S/740 PSU I DM 48/60	-	LED55	06345200	BGP340 LED92--3S/740 PSU I DM 48/60	-	LED92
06344500	BGP340 LED74--3S/740 PSU I DM 48/60	-	LED74	06346900	BGP340 LED110--3S/740 PSU I DM 48/60	-	LED110

Selenium LED

Order Code	Full Product Name	Coating	Lamp family code
06370400	BGP340 LED92--3S/740 PSR I DM DDF1 48/60	-	LED92
06371100	BGP340 LED110--3S/740 PSR I DM DDF1 48/6	-	LED110
06378000	BGP340 LED55--3S/740 PSR I DM DDF2 48/60	-	LED55
06379700	BGP340 LED74--3S/740 PSR I DM DDF2 48/60	-	LED74
06380300	BGP340 LED92--3S/740 PSR I DM DDF2 48/60	-	LED92
06381000	BGP340 LED110--3S/740 PSR I DM DDF2 48/6	-	LED110

Order Code	Full Product Name	Coating	Lamp family code
06388900	BGP340 LED55--3S/740 PSR I DM DDF3 48/60	-	LED55
06391900	BGP340 LED110--3S/740 PSR I DM DDF3 48/6	-	LED110
06434300	BGP340 LED37--3S/740 PSU II DM MSP 48/60	Marine salt protected coating	LED37
06435000	BGP340 LED55--3S/740 PSU II DM MSP 48/60	Marine salt protected coating	LED55

Initial Performance (IEC Compliant)

Order Code	Full Product Name	Initial luminous flux
06343800	BGP340 LED55--3S/740 PSU I DM 48/60	4792 lm
06344500	BGP340 LED74--3S/740 PSU I DM 48/60	6407 lm
06345200	BGP340 LED92--3S/740 PSU I DM 48/60	7906 lm
06346900	BGP340 LED110--3S/740 PSU I DM 48/60	9381 lm
06370400	BGP340 LED92--3S/740 PSR I DM DDF1 48/60	7906 lm
06371100	BGP340 LED110--3S/740 PSR I DM DDF1 48/6	9381 lm
06378000	BGP340 LED55--3S/740 PSR I DM DDF2 48/60	4792 lm

Order Code	Full Product Name	Initial luminous flux
06379700	BGP340 LED74--3S/740 PSR I DM DDF2 48/60	6407 lm
06380300	BGP340 LED92--3S/740 PSR I DM DDF2 48/60	7906 lm
06381000	BGP340 LED110--3S/740 PSR I DM DDF2 48/6	9381 lm
06388900	BGP340 LED55--3S/740 PSR I DM DDF3 48/60	4792 lm
06391900	BGP340 LED110--3S/740 PSR I DM DDF3 48/6	9381 lm
06434300	BGP340 LED37--3S/740 PSU II DM MSP 48/60	3254 lm
06435000	BGP340 LED55--3S/740 PSU II DM MSP 48/60	4792 lm

