



Iridium gen3 – The connected intelligent ‘plug & play’ road luminaire

Iridium gen3 LED Large

Iridium gen3 is the first truly intelligent luminaire designed for seamless connectivity. No hassle in commissioning – just install the luminaire and control it from a distance through CityTouch management software. Remote light management made easy! The new ‘plug & play’ concept has been designed to ensure safe and easy installation in just three steps: 1. Install the spigot, 2. Plug in the mains, 3. Tilt and close the luminaire. The luminaire’s high efficiency at system level ensures significant energy savings compared to existing conventional installations, offering a fast payback. Thanks to its wide choice of lumen packages, optics and color temperatures, Iridium gen3 fits most applications in residential areas. The luminaire’s neo-classical design guarantees a consistent look and feel for your surroundings.

Benefits

- Seamless connection from luminaire to CityTouch software without commissioning
- ‘Plug & play’ installation in just three steps
- High efficiency ensuring fast payback and low TCO

Iridium gen3 LED Large

Features

- Seamless remote light management by means of CityTouch
- Auto-location and commissioning
- System efficacy of up to 127 lm/W
- Wide range of lumen packages between 7,200 and 15,500 lm
- Available in neutral white and warm white color temperature
- Choice of four optics: Distribution medium (DM), wide (DW), comfort (DC), road wet (DK)
- Separate spigot for safe and easy installation
- Lifetime of up to 100,000 hours at L80B10

Application

- Residential areas: residential streets, cycle paths & footpaths, roundabouts, pedestrian crossings, parking areas
- City centers: side streets, pedestrian crossings, cycle paths & footpaths, parking areas, roundabouts
- Area and Transportation: industrial areas, parking areas, petrol stations, airports, harbors, public transport areas, waterways
- Sports: parking areas

Specifications

| | |
|-----------------------------|---|
| Type | BGP383 |
| Light source | Integral LED-module |
| Power | 60 to 138 W depending on LED configuration |
| Luminous flux | 7372 to 15553 lm |
| Luminaire efficacy | 104 to 131 lm/W |
| Correlated Color | 3000 K (warm white) |
| Temperature | 4000 K (neutral white) |
| Color Rendering Index | 80 (warm white) 70 (neutral white) |
| Useful life - L80B10 | 100,000 hours |
| Operating temperature range | -30 to +35 °C |
| Driver | Built-in (self ballasted LED-module) |
| Mains voltage | 220-240 V / 50-60 Hz |
| Dimming | Dimmable versions available |
| Controls system input | 1-10 V and DALI |
| Options | Dimming - LumiStep 6, 8 hrs - DynaDimmer - Constant Light Output (CLO) - SDU - 1-10 V - DALI - RF regulation - Mains dimming Nema socket Photocell: mini cell 35, 55, 70 Lux Fuse Cable: 6-16 m Surge protection |

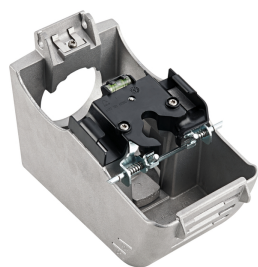
| | |
|--------------|--|
| Optic | Distribution medium (DM), wide (DW), comfort (DC), road wet optic (DK) |
| Material | Housing: high pressure die-cast aluminum Cover: polycarbonate, flat |
| Color | Aluminum or grey Other RAL or AKZO colors available on request |
| Connection | Push-in connector with 3 poles |
| Maintenance | Possibility to open with screw to replace driver and LED module |
| Installation | Post top: 60 or 76 mm Side entry: 42 or 60 mm Recommended mounting height: 10 m Standard tilt angle post top: 0, 5 and 10° Adjustable tilt angle: 0, -5 and -10° |

Iridium gen3 LED Large

Versions



Product details



Separate spigot for easy installation; suitable for post-top and side-entry mounting



In the case of side-entry mounting, the bubble level ensures that the luminaire is installed horizontally



IP connector for easy cabling between mains and luminaire



High-transmission, color-stabilized optical plate for optimized distribution and light output ratio



The CityTouch Client, together with CityTouch software, enables easy and seamless remote management of the luminaire's light output.

Iridium gen3 LED Large

