

# Product Description

## HID-Basic BSN/BMH semi-parallel for SON/CDO/CDM/MH/HPI

Impregnated electromagnetic copper/iron ballasts for use with an external semi parallel ignitor for CDM, CDO, MH, HPI (Plus) and SON lamps

### Benefits

- Long-lasting reliable solution protected from overheating
- Minimal watt losses thanks to orthocyclic winding process
- Control gear can be installed remotely

### Features

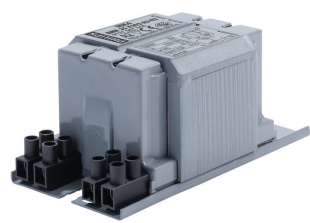
- All ballasts are equipped with ThermoSwitch for protection against end-of-lamp-life phenomena
- Ballast can also be used in combination with series (superimposed) ignitor
- Equipped with screw terminal blocks as standard; insert contacts available upon request
- Earthing-while-mounting facility
- Ballasts for alternative mains voltages/frequencies available upon request

### Application

- Ideal for the following applications:
- Recreational sports lighting, outdoor and indoor
- Road and residential lighting
- Floodlighting of buildings and monuments
- Area lighting, e.g. harbors, building sites
- Canopy lighting, e.g. petrol stations
- Horticulture
- Climatic suitability: restricted to built-in situations where relative humidity is limited

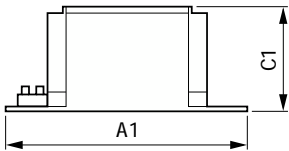
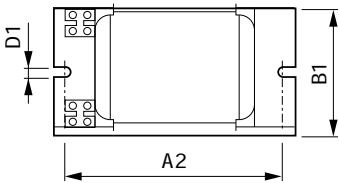
# HID-Basic BSN/BMH semi-parallel for SON/CDO/CDM/MH/HPI

## Versions



BMH 35 K302-A2-ITS 230V

## Dimensional drawing



Product	A1	A2	B1	C1	D1
BMH 35 K302-A2-ITS 230V 50Hz	118 mm	94 mm	61 mm	52 mm	6.2 mm

