

Long-lasting, reliable solution

HID-Basic BSN/BMH series for SON/CDO/MH/HPI

Impregnated electromagnetic copper/iron ballasts for use with an external series (superimposed) ignitor for CDO, MH, HPI (Plus) and SON lamps (no ignitor needed for SON-I lamps)

Benefits

- Compact dimensions and light weight
- Simple installation and cabling
- Long lasting reliable solution
- Protected from overheating by thermo switch ensuring longer lifetime

Features

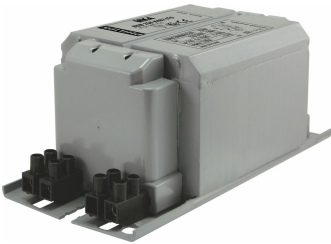
- Minimal watt losses, thanks to orthocyclic winding process
- Equipped as standard with screw terminal blocks; insert contacts on request
- Earthing-while-mounting facility
- Ballasts for alternative mains voltages/frequencies on request
- Ballast to be used with combination with series ignitors

Application

- Recreational sports lighting
- Floodlighting, area lighting and canopy lighting
- Road and residential lighting

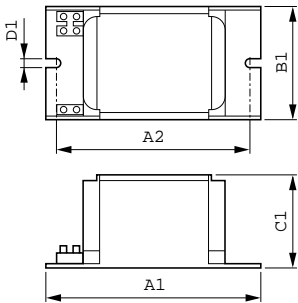
HID-Basic BSN/BMH series for SON/CDO/MH/HPI

Versions



BSN 100 K307-TS-R 230/240V 50Hz
BC1-123

Dimensional drawing



Product	D1	C1	A1	A2	B1
BSN 400 K307-A2-TS-R 230/240V 50Hz BC3	6.3 mm	83.0 mm	166.0 mm	144.0 mm	97.0 mm
BSN 100 K307-TS-R 230/240V 50Hz BC1-123	52.0 mm	123.0 mm	98.0 mm	61.0 mm	
BSN 150 K307-TS-R 230/240V 50Hz BC2-134	65.0 mm	134.0 mm	113.0 mm	76.0 mm	

Operating and Electrical	
Input Frequency	50 Hz
Input Voltage	230 V (default) or 240 V
General Information	
Number Of Lamps	1 piece/unit

General Information

Order Code	Full Product Name	Lamp Type
913700292026	BSN 100 K307-TS-R 230/240V 50Hz BC1-123	SON
913700292126	BSN 150 K307-TS-R 230/240V 50Hz BC2-134	SON/MH

Order Code	Full Product Name	Lamp Type
913700293426	BSN 400 K307-A2-TS-R 230/240V 50Hz BC3	SON/HPI

System characteristics

Order Code	Full Product Name	Rated Ballast-Lamp Power
913700292026	BSN 100 K307-TS-R 230/240V 50Hz BC1-123	100 W
913700292126	BSN 150 K307-TS-R 230/240V 50Hz BC2-134	150 W

Order Code	Full Product Name	Rated Ballast-Lamp Power
913700293426	BSN 400 K307-A2-TS-R 230/240V 50Hz BC3	400 W

