



# Product Description

## MASTER MHN-FC

Compact quartz metal halide lamps with double pinch

### Benefits

- Allows compact luminaire systems with precision optics for minimal light spill
- Good colour rendering creates a pleasant ambience with high visual comfort for players and spectators
- Continuous spectral distribution offers options for semi-professional stadiums and professional stadiums with regular TV coverage

### Features

- Double-pinch concept results in long lifetime
- Choice of 1000W and 2000W types
- Natural white colour appearance
- Compact light source allows small luminaire design

### Application

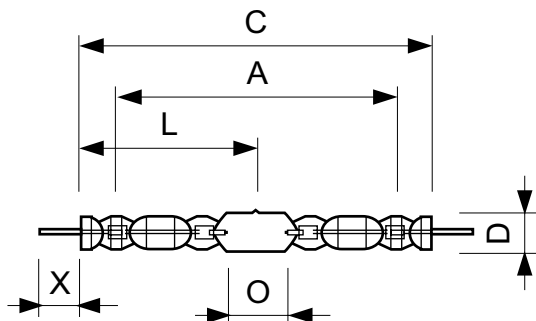
- Recreational sports and area floodlighting

### Versions



# MASTER MHN-FC

## Dimensional drawing



Product	D (max)	D	O	X	L	A	C (max)
MASTER MHN-FC 2000W/740 400V XW	33 mm	25.5 mm	108 mm	58 mm	177 mm	290 mm	357 mm
MASTER MHN-FC 1000W/740 230V XW	33 mm	25.5 mm	42.5 mm	58 mm	144 mm	226 mm	290 mm

Approval and Application	
Energy Efficiency Label (EEL)	A+
Controls and Dimming	
Dimmable	no
General Information	
Cap-Base	DOUBLEENDED
Life To 10% Failures (Nom)	8000 h
Life To 20% Failures (Nom)	9500 h
Life To 50% Failures (Nom)	12000 h
Life To 5% Failures (Nom)	7000 h
Operating Position	P5
Luminaire Design Requirements	
Bulb Temperature (Max)	950 °C
Light Technical	
Colour Code	740
Colour Designation	White (WH)
Lumen Maintenance 1000 h (Nom)	90 %
Lumen Maintenance 10000 h (Nom)	70 %
Lumen Maintenance 2000 h (Nom)	85 %
Lumen Maintenance 5000 h (Nom)	75 %
Mechanical and Housing	
Bulb Finish	Clear (CL)

## Approval and Application

Order Code	Full Product Name	Energy Consumption kWh/ 1000 h	Mercury (Hg) Content (Nom)
928070405130	MASTER MHN-FC 2000W/740 400V XW	2235 kWh	105 mg
928075705130	MASTER MHN-FC 1000W/740 230V XW	1144 kWh	85 mg

## Operating and Electrical (1/2)

Order Code	Full Product Name	Lamp			
		Current (EM) (Nom)	Voltage (Max)	Voltage (Min)	Voltage (Nom)
928070405130	MASTER MHN-FC 2000W/740 400V XW	10.11 A	235 V	205 V	222 V

Order Code	Full Product Name	Lamp			
		Current (EM) (Nom)	Voltage (Max)	Voltage (Min)	Voltage (Nom)
928075705130	MASTER MHN-FC 1000W/740 230V XW	8.9 A	145 V	115 V	130 V

## Operating and Electrical (2/2)

## MASTER MHN-FC

Order Code	Full Product Name	Power (Rated) (Nom)
928070405130	MASTER MHN-FC 2000W/740 400V XW	2032.0 W

Order Code	Full Product Name	Power (Rated) (Nom)
928075705130	MASTER MHN-FC 1000W/740 230V XW	1040.0 W

### Light Technical (1/2)

Order Code	Full Product Name	Chromaticity Coordinate X (Nom)	Chromaticity Coordinate Y (Nom)	Correlated Colour Temperature (Nom)	Colour Rendering Index (Min)
928070405130	MASTER MHN-FC 2000W/740 400V XW	380	419	4200 K	-
928075705130	MASTER MHN-FC	374	366	4100 K	62

Order Code	Full Product Name	Chromaticity Coordinate X (Nom)	Chromaticity Coordinate Y (Nom)	Correlated Colour Temperature (Nom)	Colour Rendering Index (Min)
	1000W/740 230V XW				

### Light Technical (2/2)

Order Code	Full Product Name	Colour Rendering Index (Nom)	Luminous Efficacy (rated) (Nom)	Luminous Flux (Rated) (Min)	Luminous Flux (Rated) (Nom)
928070405130	MASTER MHN-FC 2000W/740 400V XW	60	102 lm/W	190000 lm	210000 lm
928075705130	MASTER MHN-FC	65	91 lm/W	88000 lm	93000 lm

Order Code	Full Product Name	Colour Rendering Index (Nom)	Luminous Efficacy (rated) (Nom)	Luminous Flux (Rated) (Min)	Luminous Flux (Rated) (Nom)
	1000W/740 230V XW				

