



# Product Description

## MHN-TD

Double-envelope, single- or double-ended Metal halide lamps

### Benefits

- All types are UV-Block for reduced health and fading risks

### Features

- Quartz discharge tube containing high-pressure mercury and a mixture of dysprosium, holmium and thulium halides (MHN-TD) or tin iodide (MHW-TD), with sodium and thallium added for colour correction and arc stabilisation
- Double-ended lamps housed in a tubular clear UV-Block quartz evacuated outer envelope
- Restricted burning position

### Application

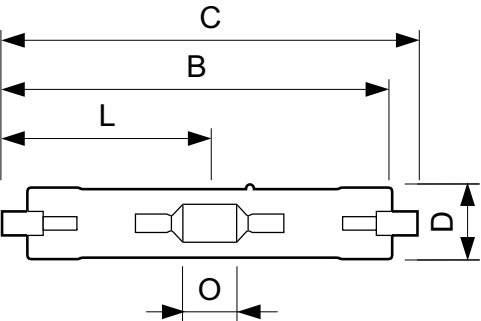
- Indoors – accent lighting, general lighting in downlighters, e.g. in shops and malls
- Downlighters, uplighters and wall-washers, e.g. in shops and malls
- Outdoors – floodlighting monuments, facades and billboards

### Warnings and Safety

- Use only in totally enclosed luminaire, even during testing (IEC61167, IEC 62035, IEC60598)
- The luminaire must be able to contain hot lamp parts if the lamp ruptures
- Control gear must include end-of-life protection (IEC61167, IEC 62035)
- A lamp breaking is extremely unlikely to have any impact on your health. If a lamp breaks, ventilate the room for 30 minutes and remove the parts, preferably with gloves. Put them in a sealed plastic bag and take it to your local waste facilities for recycling. Do not use a vacuum cleaner.

MHN-TD

Dimensional drawing



Product	D (max)	D	O	C (max)
MHN-TD 150W/730 RX7s 1CT/12	23.0 mm	0.89 inch	17.8 mm	135.4 mm
MHN-TD 150W/842 RX7s 1CT/12	23.0 mm	0.89 inch	17.8 mm	135.4 mm
MHN-TD 70W/730 RX7s 1CT/12	19.5 mm	0.75 inch	7.7 mm	117.6 mm
MHN-TD 70W/842 RX7s 1CT/12	19.5 mm	0.75 inch	7.7 mm	117.6 mm

General Information	
Cap-Base	RX7s
Operating Position	P45
Controls and Dimming	
Dimmable	No
Mechanical and Housing	
Bulb Finish	Clear
Bulb Shape	TD

Light Technical (1/2)

Order Code	Full Product Name	Chromaticity	Chromaticity	Color Designation	Correlated Color Temperature (Nom)	Color	Luminous Efficacy (Rated) (Min)	Luminous Efficacy (rated) (Nom)
		Coordinate X (Nom)	Coordinate Y (Nom)			rendering index (CRI)		
928070205190	MHN-TD 70W/842 RX7s 1CT/12	0.371	0.366	Cool White (CW)	4200 K	75	67 lm/W	75 lm/W
928076505190	MHN-TD 150W/842 RX7s 1CT/12	0.371	0.366	Cool White (CW)	4200 K	81	73 lm/W	81 lm/W
928482400092	MHN-TD 70W/730 RX7s 1CT/12	0.434	0.398	Warm White (WW)	3000 K	65	67 lm/W	75 lm/W
928482500092	MHN-TD 150W/730 RX7s 1CT/12	0.434	0.398	Warm White (WW)	3000 K	67	81 lm/W	90 lm/W

Light Technical (2/2)

Order Code	Full Product Name	Luminous Flux
928070205190	MHN-TD 70W/842 RX7s 1CT/12	5,800 lm
928076505190	MHN-TD 150W/842 RX7s 1CT/12	12,500 lm

Order Code	Full Product Name	Luminous Flux
928482400092	MHN-TD 70W/730 RX7s 1CT/12	5,800 lm
928482500092	MHN-TD 150W/730 RX7s 1CT/12	13,400 lm

Operating and Electrical

Order Code	Full Product Name	Voltage (Nom)	Power Consumption
928070205190	MHN-TD 70W/842 RX7s 1CT/12	90 V	77.0 W
928076505190	MHN-TD 150W/842 RX7s 1CT/12	98 V	155.0 W

Order Code	Full Product Name	Voltage (Nom)	Power Consumption
928482400092	MHN-TD 70W/730 RX7s 1CT/12	90 V	77.0 W
928482500092	MHN-TD 150W/730 RX7s 1CT/12	96 V	155.0 W

Approval and Application

Order Code	Full Product Name	Energy	Mercury (Hg)	Mercury (Hg)
		Consumption kWh/1000 h	Content (Max)	Content (Nom)
928070205190	MHN-TD 70W/842 RX7s 1CT/12	77 kWh	11 mg	11 mg
928076505190	MHN-TD 150W/842 RX7s 1CT/12	155 kWh	12.3 mg	12.3 mg
928482400092	MHN-TD 70W/730 RX7s 1CT/12	77 kWh	13.4 mg	13.4 mg
928482500092	MHN-TD 150W/730 RX7s 1CT/12	155 kWh	18 mg	18 mg

