



Product Description

HF-Matchbox Blue

Compact, lightweight, High Frequency electronic ballast for TL (4-18W), TL5 (14-28W) and compact fluorescent PL (5-24W) lamps

Benefits

- Automatic restart (after voltage dip or lamp exchange) ensures easy operation and hassle-free re-lamping.
- Suitable for use in class I or class II luminaires

Features

- Suitable for emergency DC operation between 190 and 254 V
- Programmed, flicker-free, pre-heated start (<0.8 s); over 8,000 on/off switches on one lamp (depending on lamp/ballast combination)
- Automatic restart (after voltage dip or lamp exchange) ensures easy operation and hassle-free re-lamping.

Application

- Designed for areas where the lighting is switched on and off infrequently
- Not suitable for use in combination with movement / presence detection
- Indoor residential use including living rooms, kitchens (under cupboards), studies (desktop), bedrooms, halls, staircases and garages
- Outdoor residential use including driveways, porches, front doors and galleries
- Installations with emergency back-up according to VDE 0108-100 / EN 60598-2-22
- For luminaires with protection Class I and II; Class I metal luminaires with earth connection require special measures for EMC compliance

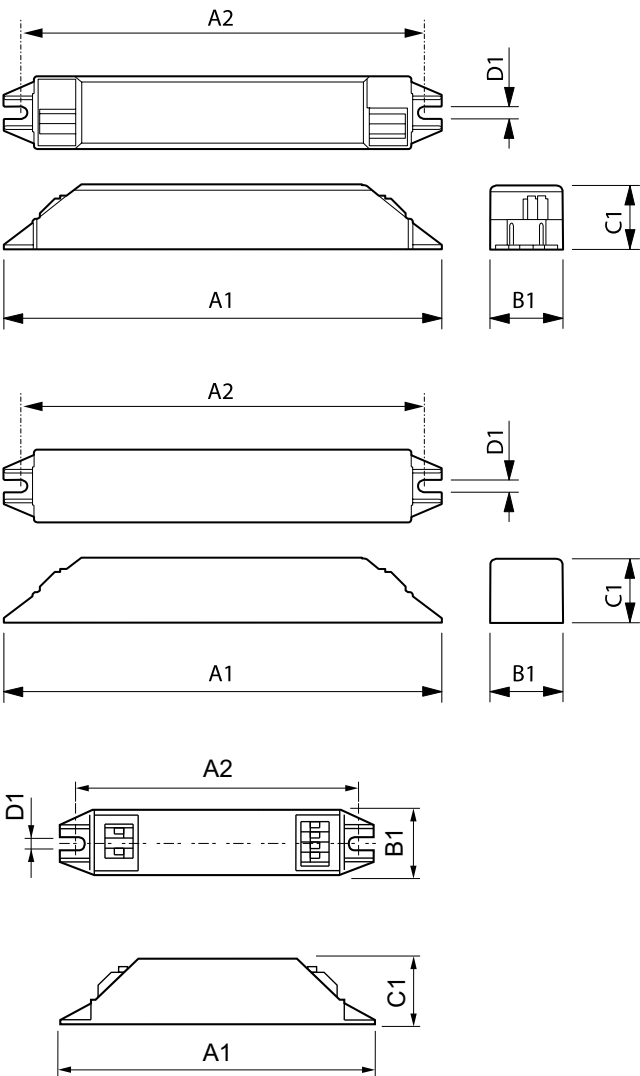
HF-Matchbox Blue

Versions



GPPR MTL-LH 0003

Dimensional drawing



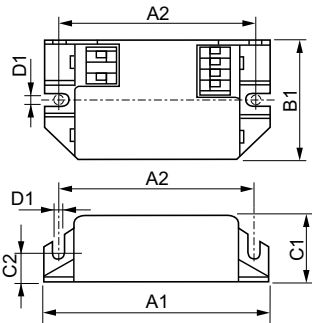
Product	A1	A2	B1	C1	D1
HF-M BLUE 121 LH TL5 230-240V	187 mm	180 mm	22 mm	22 mm	4.4 mm
HF-M BLUE 124 LH TL/TL5/PL-L 230-240V	187 mm	180 mm	22 mm	22 mm	4.4 mm

Product	A1	A2	B1	C1	D1
HF-M BLUE 109 LH TL/PL-S 230-240V	144 mm	133 mm	22 mm	22 mm	4.2 mm
HF-M BLUE 114 LH TL/PL-S/PL-C 230-240V	144 mm	133 mm	22 mm	22 mm	4.2 mm

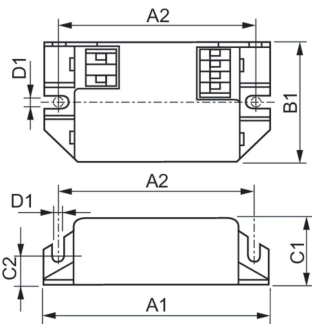
Product
HF-M BLUE 109 LH TL/PL-S 230-240V
HF-M BLUE 114 LH TL/PL-S/PL-C 230-240V
HF-M BLUE 121 LH TL5 230-240V
HF-M BLUE 124 LH TL/TL5/PL-L 230-240V

HF-Matchbox Blue

Dimensional drawing



Product
HF-M BLUE 124 SH TL/TL5/PL-L 230-240V



Product	A1	A2	B1	C1	D1
HF-M BLUE 124 SH TL/TL5/PL-L 230-240V	94 mm	84 mm	40 mm	22 mm	4.4 mm



HF-Matchbox Blue

Operating and Electrical	
Input Frequency	50 to 60 Hz
Input Voltage	230 to 240 V
Line Frequency	50 to 60 Hz

Operating and Electrical

Order Code	Full Product Name	Number of Products on MCB (16A Type B) (Nom)
53680830	HF-M BLUE 109 LH TL/PL-S 230-240V	159
53682230	HF-M BLUE 114 LH TL/PL-S/PL-C 230-240V	101
53640230	HF-M BLUE 124 LH TL/TL5/PL-L 230-240V	60

Order Code	Full Product Name	Number of Products on MCB (16A Type B) (Nom)
53646430	HF-M BLUE 121 LH TL5 230-240V	59
53638930	HF-M BLUE 124 SH TL/TL5/PL-L 230-240V	60

Mechanical and Housing

Order Code	Full Product Name	Housing
53680830	HF-M BLUE 109 LH TL/PL-S 230-240V	LH
53682230	HF-M BLUE 114 LH TL/PL-S/PL-C 230-240V	LH
53640230	HF-M BLUE 124 LH TL/TL5/PL-L 230-240V	LH

Order Code	Full Product Name	Housing
53646430	HF-M BLUE 121 LH TL5 230-240V	LH
53638930	HF-M BLUE 124 SH TL/TL5/PL-L 230-240V	SH

