

Product Description

HF-Basic II for TL-D lamps

Affordable, reliable, CE complying, high frequency electronic ballast for TLD fluorescent lamps. Ideal alternative for electromagnetic (EM) ballasts.

Benefits

- Savings of 25% energy compared to electromagnetic "C-type" ballasts
- Instant start gives "direct" light
- HF-operation eliminates eye strain as caused by electromagnetic ballasts
- No igniter/capacitor needed, simplified wiring compared to Electromagnetic ballasts
- The HF-B TLD range has a robust design and meets internal safety, EMC and Immunity tests
- Offers the flexibility for simple wiring release possibility
- Including safety approbation via an external test-house covering IEC/EN 61347
- Automatic restart (after voltage dip or lamp exchange) ensures easy operation
- and hassle free re-lamping

Features

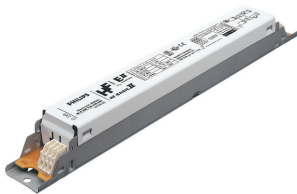
- Energy efficient CELMA EEI = A2
- Complying to CE, VDE-EMC, and ENEC
- 50.000 hour lifetime at 75°C (Tc max) and >4.000 on/off switches on one lamp
- Active power factor correction, smart power
- Instant start, flicker-free start
- High power factor >0.96 with THD <15%
- Required battery voltage for guaranteed ignition 198 - 254 V
- Required battery voltage for burning lamps 176 - 254 V
- Nominal light output is obtained at the DC voltage of 220 - 240 V
- EMC compliant to EN 55015 2006 + A1 2007
- Universal connector WAGO 251

HF-Basic II for TL-D lamps

Application

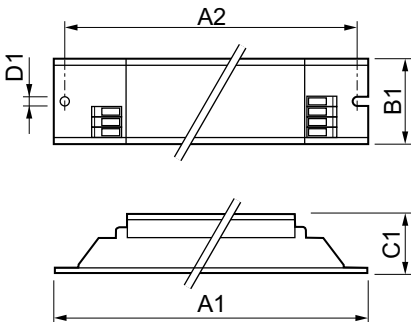
- Designed for applications where lamps burn for a long period of time and switching cycle (on/off) is infrequent (e.g. maximum 3 times a day)
- Ideal for installations such as department stores, airports, offices
- Suitable for high risk or explosive areas

Versions



HF-B 136 TL-D EII 220-240V 50/60Hz

Dimensional drawing



Product	D1	C1	A1	A2	B1
HF-B 158/258 TL-D EII 220-240V 50/60Hz	4.2 mm	28.0 mm	280.0 mm	265.0 mm	30.0 mm
HF-B 136/236 TL-D EII 220-240V 50/60Hz	4.2 mm	28.0 mm	280.0 mm	265.0 mm	30.0 mm

Approval and Application	
Energy Efficiency Index	A2
Operating and Electrical	
Input Frequency	50 to 60 Hz
Input Voltage	220 to 240 V
General Information	
Number Of Lamps	2 piece/unit
Lamp Type	TL-D
Mechanical and Housing	
Housing	-

General Information

HF-Basic II for TL-D lamps

Order Code	Full Product Name	Number Of Products On MCB (16A Type B) (Nom)
HFB236TLDM	ELE BALLAST (2) 36W TLD 230V	28

Order Code	Full Product Name	Number Of Products On MCB (16A Type B) (Nom)
HFB258TLDM	ELE BALLAST (2) 58W TLD 230V	12

System characteristics

Order Code	Full Product Name	Lamp Power On TL-D	Rated Ballast-Lamp Power
HFB236TLDM	ELE BALLAST (2) 36W TLD 230V	32 W	36 W

Order Code	Full Product Name	Lamp Power On TL-D	Rated Ballast-Lamp Power
HFB258TLDM	ELE BALLAST (2) 58W TLD 230V	50 W	58 W

