

Product Description

HF-Matchbox Red

Compact, lightweight, High Frequency electronic ballast for TL (8-18W), TL5 (14-24W) and compact fluorescent PL (7-24W) lamps

Benefits

- Can be operated with movement-detection control systems.
- Automatic restart (after voltage dip or lamp exchange) ensures easy operation and hassle-free re-lamping.
- Suitable for use in class I or class II luminaires

Features

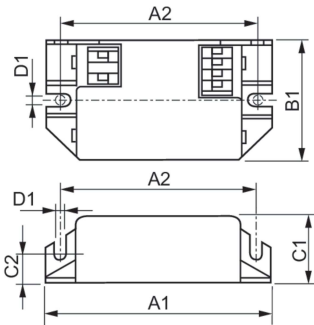
- Over 60,000 on/off switches on one lamp (depending on lamp/ballast combination)
- Suitable for emergency DC operation between 190 and 254 V
- Programmed, flicker-free, pre-heated start (<0.8 s) which allows the lamp to be switched on and off without reducing useful lamp life

Application

- Designed for applications with high switching frequency, for example:
- Indoor and outdoor use with infrared remote control systems (e.g. movement detection)
- Indoor residential use including living rooms, kitchens (under cupboards), studies (desktop), bedrooms, halls, staircases and garages
- Outdoor residential use including driveways, porches, front doors and galleries
- Installations with emergency back-up according to VDE 0108-100 / EN 60598-2-22
- For luminaires with protection Class I and II; Class I metal luminaires with earth connection require special measures for EMC compliance

HF-Matchbox Red

Dimensional drawing



Product	D1	C1	C2	A1	A2	B1
HF-M RED 109 SH TL/PL-S 230-240V	4.4 mm	22.0 mm	10.0 mm	80.0 mm	70.0 mm	40.0 mm
HF-M RED 114 SH TL/TL5/PL-C/S 230-240V	4.2 mm	22.0 mm	10.0 mm	80.0 mm	70.0 mm	40.0 mm
HF-M RED 118 SH PL-C/PL-T 230-240V	4.4 mm	22.0 mm	10.0 mm	80.0 mm	70.0 mm	40.0 mm
HF-M RED 124 SH TL/TL5/PL-L 230-240V	4.4 mm	22.0 mm	10.0 mm	94.0 mm	70.0 mm	40.0 mm

Operating and Electrical	
Input Frequency	50 to 60 Hz
Input Voltage	230 to 240 V
Line Frequency	50 to 60 Hz
Mechanical and Housing	
Housing	SH

Operating and Electrical

Order Code	Full Product Name	Number of Products on MCB (16A Type B) (Nom)
91040030	HF-M RED 124 SH TL/TL5/PL-L 230-240V	48
93142930	HF-M RED 109 SH TL/PL-S 230-240V	159

Order Code	Full Product Name	Number of Products on MCB (16A Type B) (Nom)
93140530	HF-M RED 114 SH TL/TL5 230-240V	101
92802330	HF-M RED 118 SH PL-C/PL-T 230-240V	73

