

# Product Description

## HF-Performer TL5 Circular

Compact, square, lightweight, High Frequency electronic ballasts for TL5 Circular lamps

### Benefits

- 50% longer lamp life than with conventional ballasts
- Up to 25% energy saving at constant luminous flux compared with conventional ballasts
- Constant light independent of mains voltage fluctuations

### Features

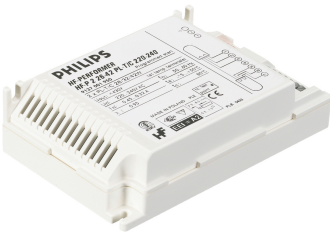
- Programmed start: flicker-free, warm-start circuit
- Protected against excessive mains voltages
- Automatic stop circuit (safety stop) is activated within 5 seconds in case of lamp failure; ballast resets automatically after lamp replacement

### Application

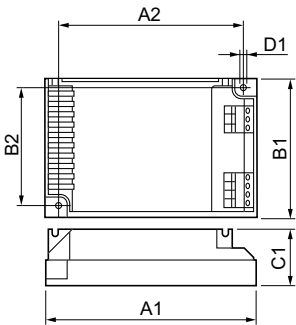
- Ideal for applications with high switching frequency, for example:
- Use with infrared remote control systems (e.g. movement detection)
- Department stores, shops, supermarkets, hotels, hospitals, office buildings
- Airports
- Installations with emergency back-up according to VDE 0108-100 / EN 60598-2-22 with re-ignition <0.5 s

# HF-Performer TL5 Circular

## Versions



## Dimensional drawing



Product	D1	C1	A1	A2	B1	B2
HF-P 155 TL5C 220-240V 50/60Hz	4.5 mm	30.0 mm	103.0 mm	93.5 mm	67.0 mm	57.5 mm
HF-P 160 TL5C 220-240V 50/60Hz	4.5 mm	30.0 mm	103.0 mm	93.5 mm	67.0 mm	57.5 mm

Operating and Electrical	
Input Frequency	50 to 60 Hz
Input Voltage	220 to 240 V
General Information	
Number Of Products On MCB (16A Type B) (Nom)	28
Number Of Lamps	1 piece/unit
Lamp Type	TL5C
Mechanical and Housing	
Housing	S 103x67x30

## Approval and Application

Order Code	Full Product Name	Energy Efficiency Index
92776730	HF-P 155 TL5C 220-240V 50/60HZ	A3

Order Code	Full Product Name	Energy Efficiency Index
92778130	HF-P 160 TL5C 220-240V 50/60HZ	A2

## System characteristics

Order Code	Full Product Name	Rated Ballast-Lamp Power
92776730	HF-P 155 TL5C 220-240V 50/60HZ	55 W

Order Code	Full Product Name	Rated Ballast-Lamp Power
92778130	HF-P 160 TL5C 220-240V 50/60HZ	60 W

## HF-Performer TL5 Circular

