



Dimming – a next step in energy saving

HF-Regulator Intelligent Touch DALI for PL-T/C and TL5C

Intelligent high-frequency electronic dimming ballast, using DALI (Digital Addressable Lighting Interface according to IEC62386) or Touch and Dim push-button protocol for fluorescent lamps. Features Corridor Mode, programmable with Philips MultiOne. High-frequency operation improves light quality and lamp lifetime. Pre-empts upcoming legislation as it meets A1BAT requirements.

优点

- Programmed start: flicker-free ignition in 0.5 seconds and striation-free operation, no stroboscopic effects. Preheating the lamp electrodes enables the lamps to be switched on and off without reducing life
- Smart power ensures constant light, independent of mains fluctuations, and dimming from 3 to 100%
- Protected against excessive mains voltages, incorrect connections and incorrect lamp use

特点

- Extremely low stand-by losses, controlled cut-off for dimming levels above 80%
- Combined with controls, additional energy savings can be achieved
- Stop circuit is activated within 5 seconds of lamp failure (safety stop), and ballast resets automatically after lamp replacement
- HF operation improves light quality and lamp lifetime
- Programmable Corridor Mode
- Compliant with European and Asian norms and suitable for emergency lighting systems

应用

- Indoor general and task lighting applications in combination with lighting control systems (personal control, daylight linking and/or movement detection)

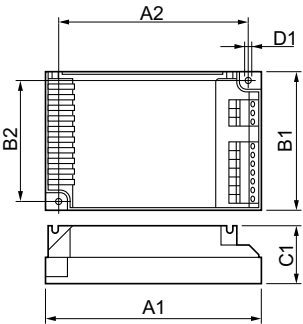
HF-Regulator Intelligent Touch DALI for PL-T/C and TL5C

Versions



GPPR RITD 0006

二维绘图



Product	D1	C1	A1	A2	B1	B2
HF-Ri TD 2 26-42 PL-T/C E	4.5 mm	33.0 mm	123.0 mm	111.0 mm	79.0 mm	67.0 mm
+						

