



# HF-Regulator II for PL-T/C – Dimming: a next step in energy saving

## HF-Regulator II for PL-T/C

Compact, high-frequency electronic dimming ballast, using the analog protocol (1-10 V) for PL-T, PL-C and PL-R lamps

### Benefits

- The lamp power can be dimmed from 1 to 100% via the Analog control input (in accordance with the 1-10 V industry standard)
- Compliant with European and Asian norms and suitable for emergency lighting systems
- HF operation improves light quality, lamp lifetime
- Combined with controls, additional energy savings can be achieved

### Features

- Programmed start: flicker-free ignition < 0.5 seconds and striation-free operation, no stroboscopic effects. Preheating the lamp electrodes enables the lamps to be switched on and off without reducing life
- Smart power ensures constant light, independent of mains fluctuations
- Up to 60% reduction in energy consumption by using automatic lighting control systems
- Stop circuit is activated within 5 seconds in the event of lamp failure (safety stop), and ballast resets automatically after lamp replacement

### Application

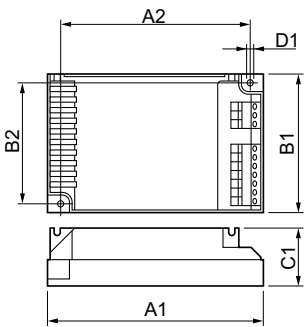
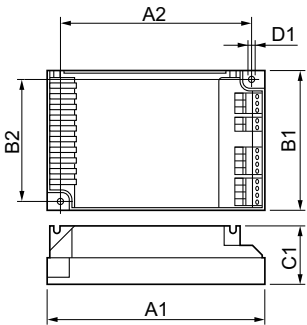
- Indoor, general and task lighting applications in combination with lighting control systems (personal control, daylight linking and/or movement detection)

# HF-Regulator II for PL-T/C

## Versions



## Dimensional drawing



Product	D1	C1	A1	A2	B1	B2
HF-R 2 26-42 PL-T/C EII	4.5 mm	33.0	123.0	111.0	79.0	67.0
220-240V 50/60Hz		mm	mm	mm	mm	mm
HF-R 218 PL-T/C EII	4.5 mm	33.0	123.0	111.0	79.0	67.0
220-240V 50/60Hz		mm	mm	mm	mm	mm

Product	D1	C1	A1	A2	B1	B2
HF-R 1 26-42 PL-T/C EII	4.5 mm	33.0	123.0	111.0	79.0	67.0
220-240V 50/60Hz		mm	mm	mm	mm	mm

# HF-Regulator II for PL-T/C

Approval and application	
Energy Efficiency Index	A1 BAT
Operating and electrical	
Input Frequency	50 to 60 Hz
Input Voltage	220 to 240 V
General information	
Lamp Type	PL-T/C
Mechanical and housing	
Housing	S 123x79x33
System characteristics	
Rated Ballast-Lamp Power	26-42 W

## General information

Order Code	Full Product Name	Number Of Products On MCB (16A Type B) (Nom)	Number Of Lamps
80972500	HF-R 2 26-42 PL-T/C EII 220-240V 50/60Hz	12	2 piece/unit

Order Code	Full Product Name	Number Of Products On MCB (16A Type B) (Nom)	Number Of Lamps
80971800	HF-R 1 26-42 PL-T/C EII 220-240V 50/60Hz	28	1 piece/unit

