

# Affordable, robust solution

## HF-Selectalume II for TL5 lamps

HF-Selectalume II is the most cost-effective, reliable, slim and affordable fluorescent solution, with highly disruptive technology for energy saving, system flexibility and unsurpassed performance. The cost-saving HF-Selectalume II has a robust design which meets all relevant international safety and performance standards. HF-Selectalume II is intended for use with indoor lighting fixtures such as spotlights, downlights and recessed luminaires, which are largely used in office, retail, industry, hotel, restaurant and other applications where control devices are installed with occasional On/Off switching activity

### Benefits

- Automatic restart (after voltage dip or lamp exchange) ensures easy operation and hassle-free re-lamping.
- DC emergency operation in line with IEC/EN 60598-2-22 luminaire norms
- Suitable for luminaires in protection class I and, after testing, class II

### Features

- Complies with CE and Kema-Keur
- Average lifetime in excess of 50,000 hours at  $T_a = 50^\circ\text{C}$
- Rapid warm lamp start with filament pre-heating  $< 1.2\text{ sec}$
- Active power factor correction to ensure constant light, irrespective of mains-voltage fluctuations
- The Wago 744 connector offers the flexibility for horizontal-manual or push-in robot wiring, including a simple wire-release facility.

# HF-Selectalume II for TL5 lamps

## Application

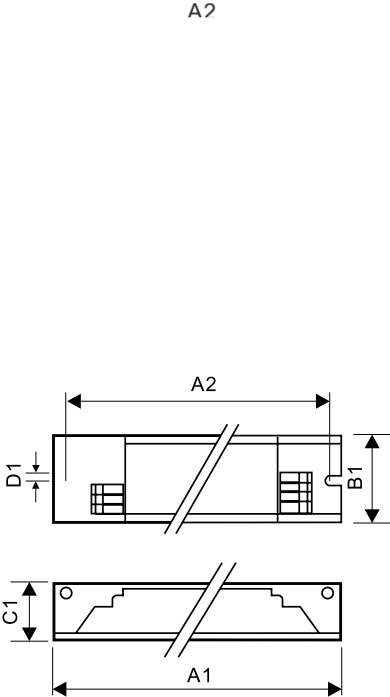
- Ideal for applications where there is a need to reduce the wattage per square meter or to reduce operating costs
- Applications in which control devices are installed with occasional On/Off switching (e.g. where movement or light sensor detectors switch the mains)
- Professional indoor applications with long operating hours, such as office buildings, call centers, classrooms, hotels, department stores, retail stores, supermarkets, convenience stores and industrial premises (e.g. corridors and low-bay trunking systems) and city parking lots

## Versions



## Dimensional drawing

A2

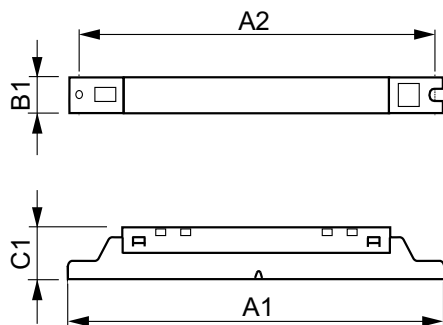


Product	D1	C1	A1	A2	B1
HF-S 154 TL5 II 220-240V 50/60Hz	4.1 mm	28.0 mm	280 mm	265 mm	30.0 mm
HF-S 249 TL5 II 220-240V 50/60Hz	4.1 mm	21.5 mm	280.0 mm	265.0 mm	30.0 mm
HF-S 254 TL5 II 220-240V 50/60Hz	4.1 mm	21.5 mm	360.0 mm	350.0 mm	30.0 mm

Product
HF-S 3/414 TL5 II 220-240V 50/60Hz
HF-S 149 TL5 II 220-240V 50/60Hz

## HF-Selectalume II for TL5 lamps

### Dimensional drawing



Product	D1	C1	A1	A2	B1
HF-S 1 14-35 TL5 HE II 220-240V	4.2 mm	22.0 mm	360.0 mm	350.0 mm	30.0 mm
HF-S 2 14-35 TL5 HE II 220-240V	4.2 mm	22.0 mm	360.0 mm	350.0 mm	30.0 mm

Operating and Electrical	
Input Frequency	50 to 60 Hz
Input Voltage	220 to 240 V
Emergency Operation	
Emergency Ballast Lumen Factor (EBLF) (Nom)	100 %
General Information	
Lamp Type	TL5

### Approval and Application

Order Code	Full Product Name	Energy Efficiency Index
88335000	HF-S 3/414 TL5 II 220-240V 50/60Hz	A2/A2BAT
90558800	HF-S 149 TL5 II 220-240V 50/60Hz	A2 BAT
90560100	HF-S 249 TL5 II 220-240V 50/60Hz	A2 BAT
90561800	HF-S 154 TL5 II 220-240V 50/60Hz	A2 BAT

Order Code	Full Product Name	Energy Efficiency Index
90562500	HF-S 254 TL5 II 220-240V 50/60Hz	A2 BAT
75842600	HF-S 114-35 TL5 II 220-240V 50/60Hz	A2 BAT
75844000	HF-S 214-35 TL5 II 220-240V 50/60Hz	A2 BAT

### General Information

Order Code	Full Product Name	Number Of Products On MCB (16A Type B) (Nom)	Number Of Lamps
88335000	HF-S 3/414 TL5 II 220-240V 50/60Hz	28	3/4 piece/unit
90558800	HF-S 149 TL5 II 220-240V 50/60Hz	-	1 piece/unit
90560100	HF-S 249 TL5 II 220-240V 50/60Hz	12	2 piece/unit
90561800	HF-S 154 TL5 II 220-240V 50/60Hz	-	1 piece/unit

Order Code	Full Product Name	Number Of Products On MCB (16A Type B) (Nom)	Number Of Lamps
90562500	HF-S 254 TL5 II 220-240V 50/60Hz	-	2 piece/unit
75842600	HF-S 114-35 TL5 II 220-240V 50/60Hz	28	1 piece/unit
75844000	HF-S 214-35 TL5 II 220-240V 50/60Hz	28	2 piece/unit

### Mechanical and Housing

Order Code	Full Product Name	Housing
88335000	HF-S 3/414 TL5 II 220-240V 50/60Hz	L 280x39x21.5
90558800	HF-S 149 TL5 II 220-240V 50/60Hz	L 280x30x21
90560100	HF-S 249 TL5 II 220-240V 50/60Hz	L 280x30x21
90561800	HF-S 154 TL5 II 220-240V 50/60Hz	L 280x30x21

Order Code	Full Product Name	Housing
90562500	HF-S 254 TL5 II 220-240V 50/60Hz	L 280x30x21
75842600	HF-S 114-35 TL5 II 220-240V 50/60Hz	L360x30x22
75844000	HF-S 214-35 TL5 II 220-240V 50/60Hz	L360x30x22

## HF-Selectalume II for TL5 lamps

### System characteristics

Order Code	Full Product Name	Lamp Power	Lamp Power	Rated
		On TL5	On TL5 HE	Ballast-Lamp Power
88335000	HF-S 3/414 TL5 II 220-240V 50/60Hz	44.2/55.0 W	-	14 W
90558800	HF-S 149 TL5 II 220-240V 50/60Hz	51 W	-	49 W
90560100	HF-S 249 TL5 II 220-240V 50/60Hz	100.2 W	-	49 W
90561800	HF-S 154 TL5 II 220-240V 50/60Hz	54 W	-	54 W

Order Code	Full Product Name	Lamp Power	Lamp Power	Rated
		On TL5	On TL5 HE	Ballast-Lamp Power
90562500	HF-S 254 TL5 II 220-240V 50/60Hz	97.2 W	-	54 W
75842600	HF-S 114-35 TL5 II 220-240V 50/60Hz	-	14.7/37.0 W	14-35 W
75844000	HF-S 214-35 TL5 II 220-240V 50/60Hz	-	28.5/71.0 W	14-35 W

