



ArenaVision MVF404 – exceptional optical efficiency

ArenaVision MVF404

The ArenaVision MVF404 floodlight – designed for outdoor sports stadiums – dramatically increases the theatrical and emotional impact of sports for TV audiences and spectators, while allowing the players to perform under optimal visual conditions. Thanks to the innovative Philips MHN-SE 2000 W high-output compact single-ended metal-halide lamp and high-tech single-piece precision optics, ArenaVision MVF404 offers much higher optical efficiency than ever before. In addition, this 2 kW floodlight boasts easy lamp fitting and replacement, full IP65 compliance, safety knife connector system and a breakthrough electronic hot-restrike solution – while continuing to deliver all the traditional benefits of Philips ArenaVision systems. The (optional) flicker-free version of ArenaVision MVF404 is designed to ensure that the flicker effect is fully eliminated in order to guarantee perfect images filmed with super-slow-motion cameras at sports events. The flicker-free version of ArenaVision MVF404 comes equipped with a special electronic igniter, which works in combination with Philips' electronic-ballast GearUnits (ECM330), to be ordered separately.

Benefits

- Innovative floodlight with Philips' compact single-ended lamp; dedicated optics ensure maximum optical efficiency and enable accurate light distribution with a minimum of spill light
- Quartz metal halide lamp meets the most demanding lighting and TV broadcast requirements with excellent colour rendering
- The flicker-free version completely eliminates flicker effect, thereby guaranteeing perfect images filmed with super-slow-motion cameras

ArenaVision MVF404

Features

- High-output compact single-ended metal-halide lamp with excellent colour rendering
- Dedicated precision optics
- IP65
- Safety knife connector system
- Electronic hot-restrike
- Flicker-free light version for super-slow-motion cameras

Application

- Outdoor sport stadiums

Specifications

Type	MVF404
Light source	HID: - 1 x MASTER MHN-SE HO / GX22-HR / 2000 W
Lamp included	Yes (light color 956)
Optic	Beam category B1 (B1)
	Beam category B2 (B2)
	Beam category B3 (B3)
	Beam category B4 (B4)
	Beam category B5 (B5)
	Beam category B6 (B6)
	Beam category B7 (B7)
	Beam category B8 (B8)
Optical cover	Front-glass for downlighting (DOWN) and uplighting versions (UP)
Ignitor	Series (SI), integral
	Hot-restrike, electronic (HRE), integral

Options	Aiming memory (AM) to safeguard the original aiming position of the luminaire during servicing
	Hot re-strike versions enabling immediate restoration of lighting after power supply failure
	Uplighting versions available for architectural lighting
	Special cable sleeve version for tropical regions
Materials and finishing	Housing and rear cover: non-corrosive, high-pressure die-cast aluminum
	Glass: chemically toughened, 3 mm thick (for downlighting versions), ceramic 3 mm thick (for uplighting versions)
	Mounting bracket: zinc nickel treated
	Clips: stainless steel (to secure the back cover)
	Reflector: anodized and brightened 99.99% aluminum
	Finishing in raw aluminum

Specifications

Installation	On mast head frame, ceiling, wall and floor mounting
	The lamp is easily installed and lamping/relamping can be done with one hand only
	Precision aiming facilities at both top and bottom of the housing for use in conjunction with the ZVF403 PAD accessory
	Adjustment of mounting bracket: 360°
	Ambient temperature outdoor: 35°C (25°C indoor)
	Drag factor (Cx): 0.93
	Projected area in 70° position: 0.20 m
	Max adjustment from the horizontal: -90 / +90°
Maintenance	Lamp access by opening clips of rear cover (tool-less)
	Equipped with knife connector system, which automatically disconnects the mains power when the rear-access back cover is opened (no need for additional relay/contactors or any extra cabling)
	No internal cleaning required

Accessories	External louver (ZVF403 GS), precision (ZVF403 PAD) aiming device
Remarks	Equipped with series ignitor (SI) and terminal block in aluminum connection box on the bracket
	Color filters for architectural lighting are available on request
	Wire mesh to prevent large glass falling out
	Pre-wired 380 - 415 V / 50 Hz gear trays (ZVF320) are available, to be ordered separately
Main applications	Outdoor sport stadiums

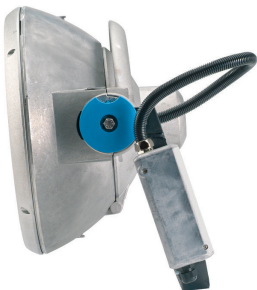
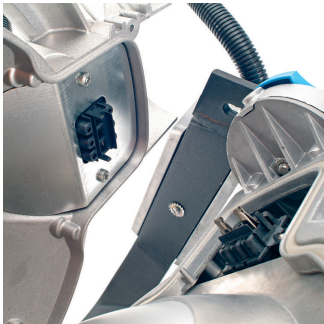
ArenaVision MVF404

Versions

ArenaVision MVF404 sports flood-lighting luminaire



Product details



ArenaVision MVF404

Product details



Approval and Application

Mech. impact protection code	IK08
------------------------------	------

General Information

CE mark	CE mark
Light source colour	956 daylight
Optical cover/lens type	DOWN
ENEC mark	ENEC mark
Gear	-
Lamp family code	MHN-SEH
Lamp power	2000 W
Number of light sources	1
Product Family Code	MVF404

Initial Performance (IEC Compliant)

Init. Corr. Colour Temperature	5600 K
--------------------------------	--------

General Information

Order Code	Full Product Name	Optic type
50201500	MVF404 MHN-SEH2000W/956 B2 SI	Beam category B2
50202200	MVF404 MHN-SEH2000W/956 B3 SI	Beam category B3
50203900	MVF404 MHN-SEH2000W/956 B4 SI	Beam category B4
50204600	MVF404 MHN-SEH2000W/956 B5 SI	Beam category B5

