



Tango 4 – compact and consistent

Tango 4 MVP483

Tango 4 is a high wattage flood luminaire for up to 1000W SON-T and HPI-T lamps with symmetrical and asymmetrical reflectors. It is ideally suited to a variety of outdoor applications – from architectural, facade and billboard lighting to area and (recreational) sports lighting. The Tango 4 compact housing guarantees optimum visual integration. Anodized-aluminum reflectors ensure a highly efficient beam distribution, while the nylon bolt caps feature a goniometric aiming device for easy adjustment and alignment. Access to the lamp and gear is quick and easy, via the hinged front glass with its quick-release stainless-steel clips. Tango 4 luminaires are RoHS compliant.

Benefits

- Optimum visual integration
- Highly efficient beam distribution
- Easy aiming, simple cleaning and speedy servicing

Features

- Compact design
- Choice of lamps up to 2000 W
- Anodized-aluminum reflector optics
- Rugged construction
- External gear

Application

- Area lighting
- Façade, billboard and architectural lighting
- Recreational sports lighting

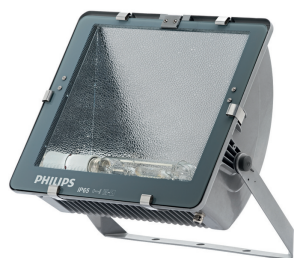
Specifications

Tango 4 MVP483

Type	MVP483
Light source	HID: - 1 x HPI-T / E40 / 1000 W - 1 x SON-T / E40 / 1000 W - 2 x MASTER HPI-T Plus / E40 / 400 W - 2 x SON-T / E40 / 400, 600 W
Lamp included	No
Mains voltage	220-240 V / 50 Hz
Ignitor	Semi-parallel (SP)* Parallel (PA)* * external on a separate gear tray
Optic	Asymmetrical, narrow beam (A-NB) Asymmetrical, wide beam (A-WB) Symmetrical, narrow beam (S-NB) Symmetrical, wide beam (S-WB)
Optical cover	Glass, flat (FG)
Materials and finishing	Housing: high-pressure, die-cast aluminum Glass: thermally hardened, 4 mm thick Gasket: silicone rubber, heat resistant Mounting bracket: powder-coated steel Aiming device cap: nylon Fixation clips: stainless steel Reflector: anodized, high-purity aluminum

Color	Grey RAL 9007, powder coated Color matched bracket, grommet and hinges
Installation	Ceiling, wall or floor mounting Cable entry via M20 cable gland Operating temperature: T Drag factor (Cx): 1.2 Projected area in horizontal position: 0.335 m Max. adjustment from the horizontal: 0-150°
Maintenance	Hinged front glass with quick-release clips for in-position lamp replacement No internal cleaning required
Remarks	Gear unit not integrated, to be ordered separately
Main applications	Area, facade, billboard, architectural and sports lighting

Versions



MVP483

Product details



Opening suspended front cover provides access to lamp



Electrical connection box of MHN-FC version equipped with series ignitor

Tango 4 MVP483

Product details



Mains cable entrance and cable gland
for HPI-T / SON-T lamp versions

