



CoreLine Panel – the clear choice for LED

CoreLine panel

Whether for a new building or renovation of an existing space, customers want lighting solutions that provide quality of light and substantial energy and maintenance savings. The new CoreLine Panel range of LED products can be used to replace functional luminaires in general lighting applications. Both Non-Office Compliant (NOC) version and Office Compliant version (OC) are now available. The process of selecting, installing and maintaining is so easy – it's a simple switch. Also available as an Interact Ready wireless CoreLine luminaire panel that works with Interact Pro lighting software and InteractReady devices to provide a connected lighting system for SMEs

Benefits

- Enables a simple switch from basic conventional luminaires to LED luminaires
- Energy savings of up to 50% compared to functional TL-D luminaires
- Uniform surface of light
- Easy connection(with looping)

Features

- Integrated LED technology
- Slim square housing
- Multi-colour and lumen switch: 3000K (3400 and 4000lm) & 4000K (3600 and 4300lm)
- Office Compliant (OC) & Non-Office Compliant (NOC) versions available
- Suspension, plaster ceiling and surface-mounting installations are possible with accessories
- Optional 3 hour emergency lighting versions available
- Tp(a) version available

CoreLine panel

Application

- Offices
- Retail
- Healthcare
- Education

Versions

CoreLine panel G5 SIA with Sensor
front side



RC132V G5 31_36_43S940 PSD
W30L120 OC



RC132V G5 31_36_43S_840 PSU
W60L60 OC_SPP



RC132V G5 31_36_43S_840 PSD
W60L60 OC_SPP



RC132V G5 29_34_40S_830 PSU
W60L60 OC_SPP

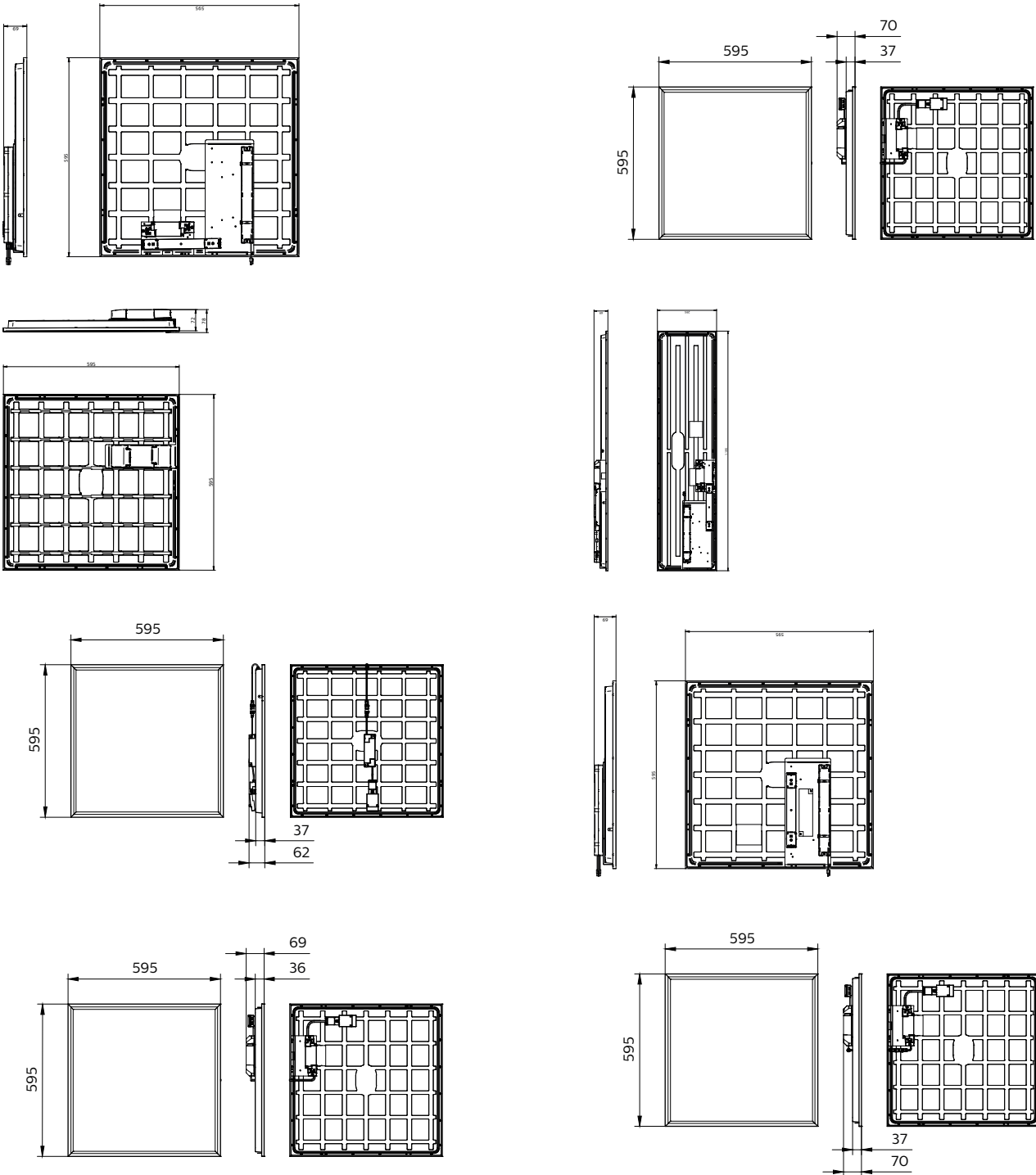


CoreLine panel G5_BN W60L60



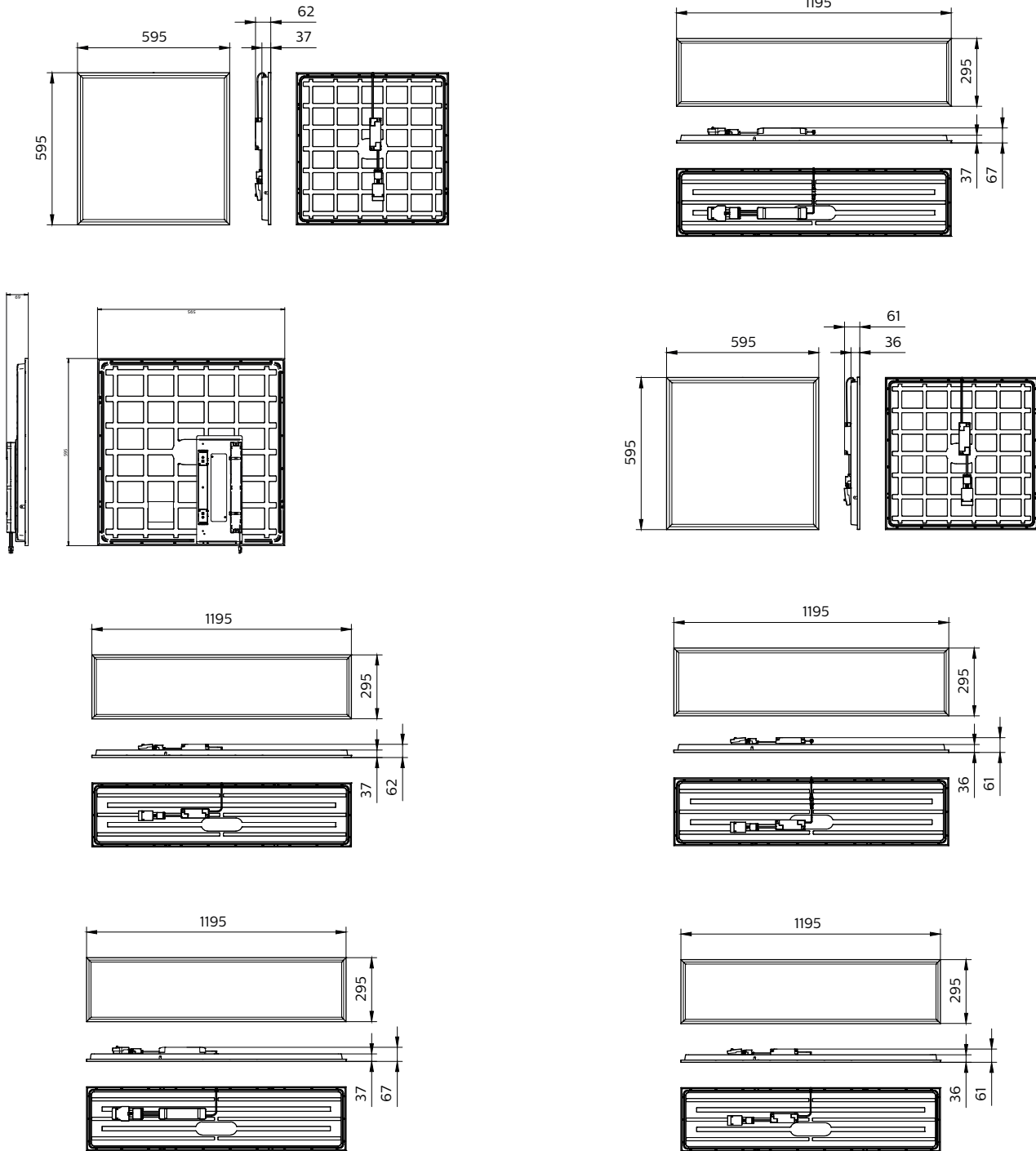
CoreLine panel

Dimensional drawing



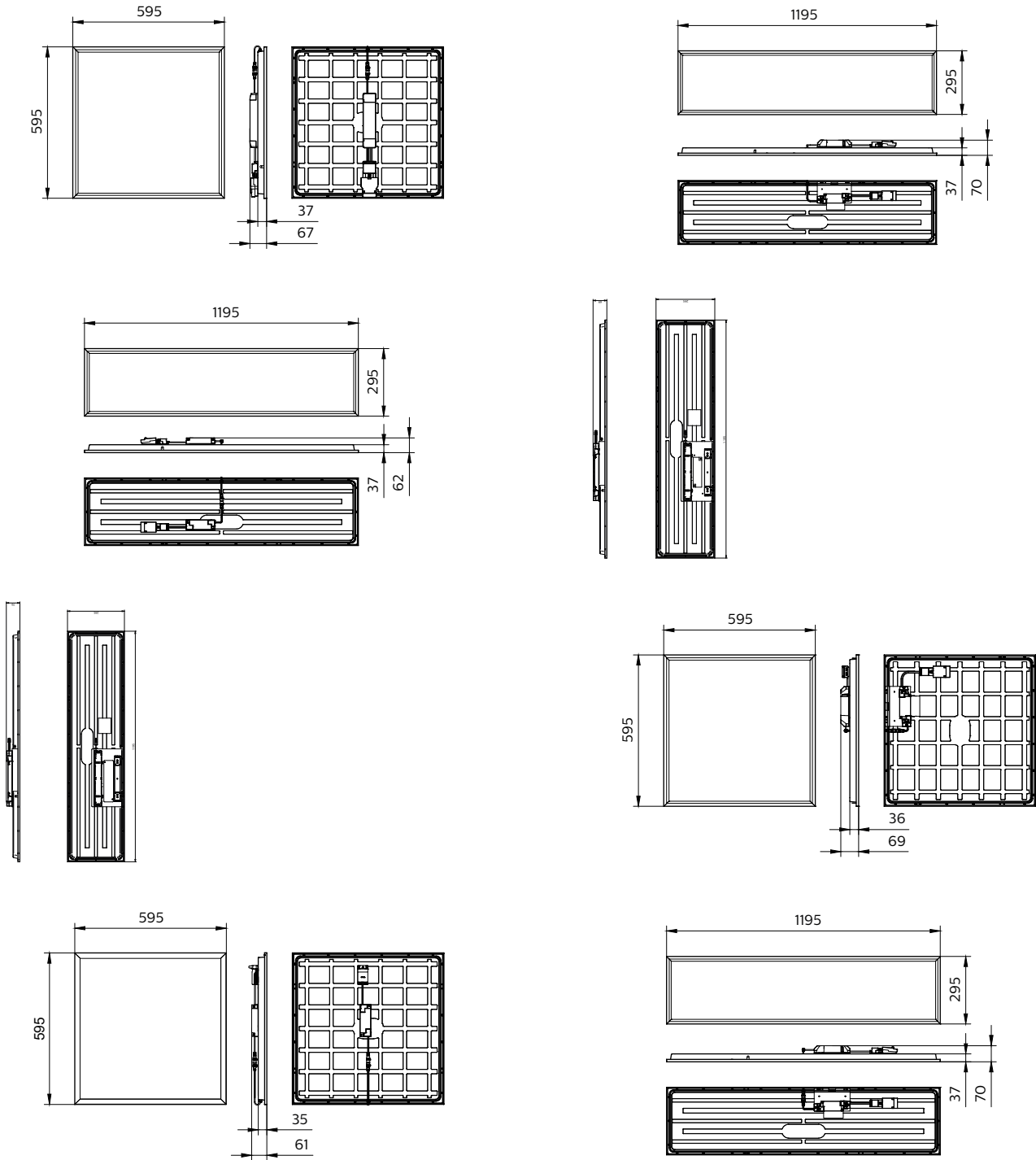
CoreLine panel

Dimensional drawing



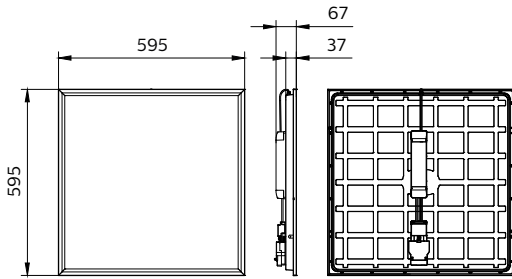
CoreLine panel

Dimensional drawing



CoreLine panel

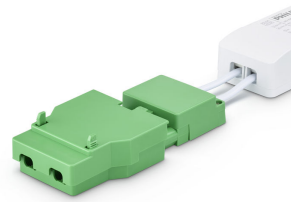
Dimensional drawing



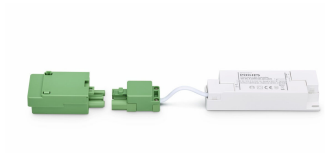
Product details



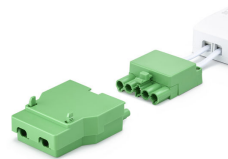
DC plug



Coreline panel G5 PSD connector closed



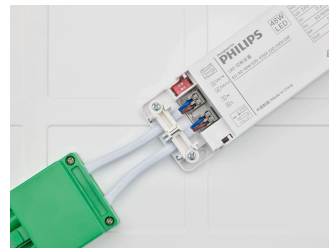
CoreLine panel Gen 5 -On/off (PSU) driver & Quick Connector



Coreline panel G5_PSD connector Start_Step 1



CoreLine panel G5- 60x60 front of pack



CoreLine Panel Gen 5 - Multilumen driver

CoreLine panel

Product details

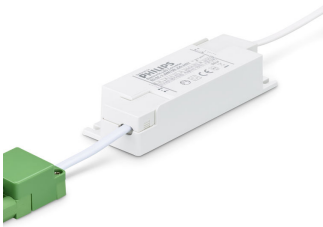
Coreline panel G5 backside PSD driver



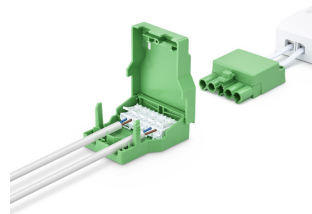
Coreline panel G5 backside PSU driver



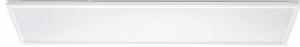
Coreline panel G5 PSU driver



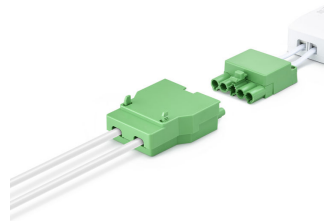
Coreline panel G5_ PSD connector
Wired_Step 3



CoreLine Panel G5 30x120 OC
Front of pack



Coreline panel G5_ PSD connector
Closed_Step 4



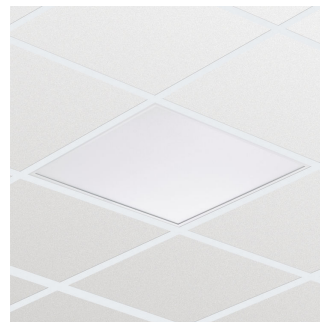
DC plug open with driver and panel



CoreLine panel BN backside
W60L60



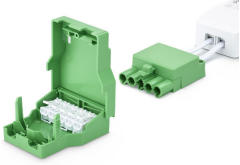
Coreline panel G5 Recessed
Ceiling



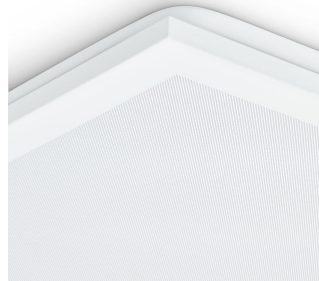
CoreLine panel

Product details

Coreline panel G5_ PSD connector
Open_Step 2



CoreLine panel BN corner W60L60



Coreline panel G5 optical cover



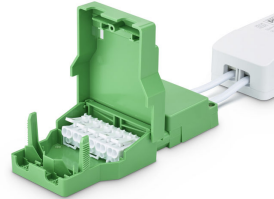
Coreline panel G5 PSD driver
Lumenswitch



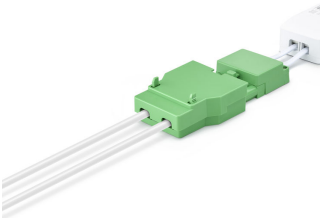
DC plug closed with driver and
panel



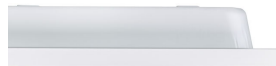
Coreline panel G5 PSD connector
open



Coreline panel G5_ PSD connector
Finished_Step 5



Coreline panel G5 side angle



CoreLine panel

General Information	
CE mark	Yes
Driver included	Yes
ENEC mark	ENEC mark
Flammability mark	For mounting on normally flammable surfaces
Glow-wire test	Temperature 650 °C, duration 30 s
Light source replaceable	No
Number of gear units	Unit
Light Technical	
Flickering value (PstLM)	1
Stroboscopic effect	0.4
Operating and Electrical	
Input Voltage	220-240 V
Line Frequency	50 or 60 Hz
Mechanical and Housing	
Housing Colour	White
Approval and Application	
Protection class IEC	Safety class II
Initial Performance (IEC Compliant)	
Luminous flux tolerance	+/-10%
Application Conditions	
Suitable for random switching	Yes

General Information

Order Code	Full Product Name	Embedded control	Product family code
01397100	RC132V G5 43S/840 SIA W60L60 OC IA4	Interact SNS210 sensor	RC132V
01398800	RC132V G5 40S/830 SIA W60L60 OC IA4	Interact SNS210 sensor	RC132V
95040500	RC132V G5 31_36_43S/940 PSD W30L120 OC	-	-
01369800	RC132V G5 36S/840 PSU W30L120 OC ELB3	-	RC132V
01370400	RC132V G5 36S/840 PSD W30L120 OC ELB3	-	RC132V
01375900	RC132V G5 36S/840 PSU W30L120 NOC ELB3	-	RC132V
01388900	RC132V G5 36S/840 WIA W30L120 OC ELB3	-	RC132V
95003000	RC132V G5 36S/840 PSU W30L120 NOC	-	-
95007800	RC132V G5 36S/840 PSU W30L120 OC	-	-
95013900	RC132V G5 36S/840 PSD W30L120 OC	-	-
95371000	RC132V G5 36S/840 WIA W30L120 OC	-	-
95031300	RC132V G5 31_36_43S/840 PSU W60L60 OC	-	-
95037500	RC132V G5 31_36_43S/840 PSD W60L60 OC	-	-
95030600	RC132V G5 29_34_40S/830 PSU W60L60 OC	-	-
50183699	RC132V 31_36_43S/840 PSU W60L60 OC UKI	-	-
01367400	RC132V G5 36S/840 PSD W60L60 OC ELB3	-	RC132V
01368100	RC132V G5 36S/840 PSU W60L60 OC ELB3	-	RC132V
01371100	RC132V G5 31_36_43S/840 PSD W60L60OCELB3	-	RC132V
01372800	RC132V G5 36S/840 PSD W60L60 OCTP(a)ELB3	-	RC132V
01373500	RC132V G5 36S/840 PSU W60L60 NOC ELB3	-	RC132V
01386500	RC132V G5 36S/840 WIA W60L60 OC ELB3	-	RC132V
01387200	RC132V G5 36S/840 WIA W60L60 NOC ELB3	-	RC132V
01389600	RC132V G5 43S/840 WIA W60L60 NOC ELB3	-	RC132V
01394000	RC132V G5 43S/840 WIA W60L60 OC ELB3	-	RC132V
95000900	RC132V G5 36S/840 PSU W60L60 NOC	-	-
95004700	RC132V G5 34S/830 PSU W60L60 OC	-	-
95005400	RC132V G5 36S/840 PSU W60L60 OC	-	-
95009200	RC132V G5 36S/840 PSD W60L60 OC	-	-
95010800	RC132V G5 48S/840 PSD W60L60 OC	-	-
95017700	RC132V G5 36S/940 PSD W60L60 OC	-	-
95018400	RC132V G5 43S/940 PSD W60L60 OC	-	-
95364200	RC132V G5 36S/840 WIA W60L60 NOC	-	-
95367300	RC132V G5 36S/840 WIA W60L60 OC	-	-
95368000	RC132V G5 43S/840 WIA W60L60 OC	-	-
95380200	RC132V G5 36S/840 PSD W60L60 OC TP(a)	-	-

Light Technical (1/2)

Order Code	Full Product Name	Correlated	Colour	Luminous	Luminous
		Temperature	rendering index (CRI)	efficacy (rated) (nom.)	
01397100	RC132V G5 43S/840 SIA W60L60 OC IA4	4000 K	≥80	119 lm/W	4,300 lm
01398800	RC132V G5 40S/830 SIA W60L60 OC IA4	3000 K	≥80	111 lm/W	4,000 lm
95040500	RC132V G5 31_36_43S/940 PSD W30L120 OC	4000 K	≥90	107 lm/W	3,100 lm

Order Code	Full Product Name	Correlated	Colour	Luminous	Luminous
		Temperature	rendering index (CRI)	efficacy (rated) (nom.)	
01369800	RC132V G5 36S/840 PSU W30L120 OC ELB3	4000 K	≥80	106 lm/W	3,600 lm
01370400	RC132V G5 36S/840 PSD W30L120 OC ELB3	4000 K	≥80	106 lm/W	3,600 lm

CoreLine panel

Order Code	Full Product Name	Correlated	Colour	Luminous	Luminous
		Colour	rendering	efficacy	
		Temperature	index	(rated)	Flux
			(CRI)	(nom.)	
01375900	RC132V G5 36S/840 PSU W30L120 NOC ELB3	4000 K	≥80	106 lm/W	3,600 lm
01388900	RC132V G5 36S/840 WIA W30L120 OC ELB3	4000 K	≥80	107 lm/W	3,600 lm
95003000	RC132V G5 36S/840 PSU W30L120 NOC	4000 K	≥80	125 lm/W	3,600 lm
95007800	RC132V G5 36S/840 PSU W30L120 OC	4000 K	≥80	125 lm/W	3,600 lm
95013900	RC132V G5 36S/840 PSD W30L120 OC	4000 K	≥80	125 lm/W	3,600 lm
95371000	RC132V G5 36S/840 WIA W30L120 OC	4000 K	≥80	125 lm/W	3,600 lm
95031300	RC132V G5 31_36_43S/840 PSU W60L60 OC	4000 K	≥80	125 lm/W	3,100 lm
95037500	RC132V G5 31_36_43S/840 PSD W60L60 OC	4000 K	≥80	125 lm/W	3,100 lm
95030600	RC132V G5 29_34_40S/830 PSU W60L60 OC	3000 K	≥80	120 lm/W	2,900 lm
50183699	RC132V 31_36_43S/840 PSU W60L60 OC UKI	4000 K	≥80	120 lm/W	3,100 lm
01367400	RC132V G5 36S/840 PSD W60L60 OC ELB3	4000 K	≥80	106 lm/W	3,600 lm
01368100	RC132V G5 36S/840 PSU W60L60 OC ELB3	4000 K	≥80	106 lm/W	3,600 lm
01371100	RC132V G5 31_36_43S/840 PSD W60L60OCELB3	4000 K	≥80	107 lm/W	3,100 lm
01372800	RC132V G5 36S/840 PSD W60L60 OCTP(a)ELB3	4000 K	≥80	106 lm/W	3,600 lm

Order Code	Full Product Name	Correlated	Colour	Luminous	Luminous
		Colour	rendering	efficacy	
		Temperature	index	(rated)	Flux
			(CRI)	(nom.)	
01373500	RC132V G5 36S/840 PSU W60L60 NOC ELB3	4000 K	≥80	106 lm/W	3,600 lm
01386500	RC132V G5 36S/840 WIA W60L60 OC ELB3	4000 K	≥80	107 lm/W	3,600 lm
01387200	RC132V G5 36S/840 WIA W60L60 NOC ELB3	4000 K	≥80	107 lm/W	3,600 lm
01389600	RC132V G5 43S/840 WIA W60L60 NOC ELB3	4000 K	≥80	128 lm/W	4,300 lm
01394000	RC132V G5 43S/840 WIA W60L60 OC ELB3	4000 K	≥80	128 lm/W	4,300 lm
95000900	RC132V G5 36S/840 PSU W60L60 NOC	4000 K	≥80	125 lm/W	3,600 lm
95004700	RC132V G5 34S/830 PSU W60L60 OC	3000 K	≥80	120 lm/W	3,400 lm
95005400	RC132V G5 36S/840 PSU W60L60 OC	4000 K	≥80	125 lm/W	3,600 lm
95009200	RC132V G5 36S/840 PSD W60L60 OC	4000 K	≥80	125 lm/W	3,600 lm
95010800	RC132V G5 48S/840 PSD W60L60 OC	4000 K	≥80	120 lm/W	4,800 lm
95017700	RC132V G5 36S/940 PSD W60L60 OC	4000 K	≥90	104 lm/W	3,600 lm
95018400	RC132V G5 43S/940 PSD W60L60 OC	4000 K	≥90	107 lm/W	4,300 lm
95364200	RC132V G5 36S/840 WIA W60L60 NOC	4000 K	≥80	125 lm/W	3,600 lm
95367300	RC132V G5 36S/840 WIA W60L60 OC	4000 K	≥80	125 lm/W	3,600 lm
95368000	RC132V G5 43S/840 WIA W60L60 OC	4000 K	≥80	125 lm/W	4,300 lm
95380200	RC132V G5 36S/840 PSD W60L60 OC TP(a)	4000 K	≥80	125 lm/W	3,600 lm

Light Technical (2/2)

Order Code	Full Product Name	Optic type
01397100	RC132V G5 43S/840 SIA W60L60 OC IA4	Beam angle 90°
01398800	RC132V G5 40S/830 SIA W60L60 OC IA4	Beam angle 90°
95040500	RC132V G5 31_36_43S/940 PSD W30L120 OC	Beam angle 90°
01369800	RC132V G5 36S/840 PSU W30L120 OC ELB3	Beam angle 90°
01370400	RC132V G5 36S/840 PSD W30L120 OC ELB3	Beam angle 90°
01375900	RC132V G5 36S/840 PSU W30L120 NOC ELB3	Beam angle 120°
01388900	RC132V G5 36S/840 WIA W30L120 OC ELB3	Beam angle 90°

Order Code	Full Product Name	Optic type
95003000	RC132V G5 36S/840 PSU W30L120 NOC	Beam angle 120°
95007800	RC132V G5 36S/840 PSU W30L120 OC	Beam angle 90°
95013900	RC132V G5 36S/840 PSD W30L120 OC	Beam angle 90°
95371000	RC132V G5 36S/840 WIA W30L120 OC	Beam angle 90°
95031300	RC132V G5 31_36_43S/840 PSU W60L60 OC	Beam angle 90°
95037500	RC132V G5 31_36_43S/840 PSD W60L60 OC	Beam angle 90°
95030600	RC132V G5 29_34_40S/830 PSU W60L60 OC	Beam angle 90°

CoreLine panel

Order Code	Full Product Name	Optic type
50183699	RC132V 31_36_43S/840 PSU W60L60 OC UKI	Beam angle 90°
01367400	RC132V G5 36S/840 PSD W60L60 OC ELB3	Beam angle 90°
01368100	RC132V G5 36S/840 PSU W60L60 OC ELB3	Beam angle 90°
01371100	RC132V G5 31_36_43S/840 PSD W60L60OCELB3	Beam angle 90°
01372800	RC132V G5 36S/840 PSD W60L60 OCTP(a)ELB3	Beam angle 90°
01373500	RC132V G5 36S/840 PSU W60L60 NOC ELB3	Beam angle 120°
01386500	RC132V G5 36S/840 WIA W60L60 OC ELB3	Beam angle 90°
01387200	RC132V G5 36S/840 WIA W60L60 NOC ELB3	Beam angle 120°
01389600	RC132V G5 43S/840 WIA W60L60 NOC ELB3	Beam angle 120°
01394000	RC132V G5 43S/840 WIA W60L60 OC ELB3	Beam angle 90°
95000900	RC132V G5 36S/840 PSU W60L60 NOC	Beam angle 120°

Order Code	Full Product Name	Optic type
95004700	RC132V G5 34S/830 PSU W60L60 OC	Beam angle 90°
95005400	RC132V G5 36S/840 PSU W60L60 OC	Beam angle 90°
95009200	RC132V G5 36S/840 PSD W60L60 OC	Beam angle 90°
95010800	RC132V G5 48S/840 PSD W60L60 OC	Beam angle 90°
95017700	RC132V G5 36S/940 PSD W60L60 OC	Beam angle 90°
95018400	RC132V G5 43S/940 PSD W60L60 OC	Beam angle 90°
95364200	RC132V G5 36S/840 WIA W60L60 NOC	Beam angle 120°
95367300	RC132V G5 36S/840 WIA W60L60 OC	Beam angle 90°
95368000	RC132V G5 43S/840 WIA W60L60 OC	Beam angle 90°
95380200	RC132V G5 36S/840 PSD W60L60 OC TP(a)	Beam angle 90°

Operating and Electrical

Order Code	Full Product Name	Power Consumption
01397100	RC132V G5 43S/840 SIA W60L60 OC IA4	36 W
01398800	RC132V G5 40S/830 SIA W60L60 OC IA4	36 W
95040500	RC132V G5 31_36_43S/940 PSD W30L120 OC	40 W
01369800	RC132V G5 36S/840 PSU W30L120 OC ELB3	34 W
01370400	RC132V G5 36S/840 PSD W30L120 OC ELB3	34 W
01375900	RC132V G5 36S/840 PSU W30L120 NOC ELB3	34 W
01388900	RC132V G5 36S/840 WIA W30L120 OC ELB3	34 W
95003000	RC132V G5 36S/840 PSU W30L120 NOC	28.5 W
95007800	RC132V G5 36S/840 PSU W30L120 OC	28.5 W
95013900	RC132V G5 36S/840 PSD W30L120 OC	28.5 W
95371000	RC132V G5 36S/840 WIA W30L120 OC	28.5 W
95031300	RC132V G5 31_36_43S/840 PSU W60L60 OC	34.5 W
95037500	RC132V G5 31_36_43S/840 PSD W60L60 OC	34.5 W
95030600	RC132V G5 29_34_40S/830 PSU W60L60 OC	34.5 W
50183699	RC132V 31_36_43S/840 PSU W60L60 OC UKI	34.5 W
01367400	RC132V G5 36S/840 PSD W60L60 OC ELB3	34 W
01368100	RC132V G5 36S/840 PSU W60L60 OC ELB3	34 W
01371100	RC132V G5 31_36_43S/840 PSD W60L60OCELB3	40 W

Order Code	Full Product Name	Power Consumption
01372800	RC132V G5 36S/840 PSD W60L60 OCTP(a)ELB3	34 W
01373500	RC132V G5 36S/840 PSU W60L60 NOC ELB3	34 W
01386500	RC132V G5 36S/840 WIA W60L60 OC ELB3	34 W
01387200	RC132V G5 36S/840 WIA W60L60 NOC ELB3	34 W
01389600	RC132V G5 43S/840 WIA W60L60 NOC ELB3	34 W
01394000	RC132V G5 43S/840 WIA W60L60 OC ELB3	34 W
95000900	RC132V G5 36S/840 PSU W60L60 NOC	28.5 W
95004700	RC132V G5 34S/830 PSU W60L60 OC	28.5 W
95005400	RC132V G5 36S/840 PSU W60L60 OC	28.5 W
95009200	RC132V G5 36S/840 PSD W60L60 OC	28.5 W
95010800	RC132V G5 48S/840 PSD W60L60 OC	40 W
95017700	RC132V G5 36S/940 PSD W60L60 OC	34.5 W
95018400	RC132V G5 43S/940 PSD W60L60 OC	40 W
95364200	RC132V G5 36S/840 WIA W60L60 NOC	28.5 W
95367300	RC132V G5 36S/840 WIA W60L60 OC	28.5 W
95368000	RC132V G5 43S/840 WIA W60L60 OC	34.5 W
95380200	RC132V G5 36S/840 PSD W60L60 OC TP(a)	28.5 W

Temperature

Order Code	Full Product Name	Ambient temperature range
01397100	RC132V G5 43S/840 SIA W60L60 OC IA4	0 to +35 °C
01398800	RC132V G5 40S/830 SIA W60L60 OC IA4	0 to +35 °C
95040500	RC132V G5 31_36_43S/940 PSD W30L120 OC	-10 to +40 °C
01369800	RC132V G5 36S/840 PSU W30L120 OC ELB3	0 to +35 °C
01370400	RC132V G5 36S/840 PSD W30L120 OC ELB3	0 to +35 °C
01375900	RC132V G5 36S/840 PSU W30L120 NOC ELB3	0 to +35 °C
01388900	RC132V G5 36S/840 WIA W30L120 OC ELB3	0 to +35 °C
95003000	RC132V G5 36S/840 PSU W30L120 NOC	-10 to +40 °C
95007800	RC132V G5 36S/840 PSU W30L120 OC	-10 to +40 °C
95013900	RC132V G5 36S/840 PSD W30L120 OC	-10 to +40 °C
95371000	RC132V G5 36S/840 WIA W30L120 OC	-10 to +40 °C
95031300	RC132V G5 31_36_43S/840 PSU W60L60 OC	-10 to +40 °C
95037500	RC132V G5 31_36_43S/840 PSD W60L60 OC	-10 to +40 °C

Order Code	Full Product Name	Ambient temperature range
95030600	RC132V G5 29_34_40S/830 PSU W60L60 OC	-10 to +40 °C
50183699	RC132V 31_36_43S/840 PSU W60L60 OC UKI	-10 to +35 °C
01367400	RC132V G5 36S/840 PSD W60L60 OC ELB3	0 to +35 °C
01368100	RC132V G5 36S/840 PSU W60L60 OC ELB3	0 to +35 °C
01371100	RC132V G5 31_36_43S/840 PSD W60L60OCELB3	0 to +35 °C
01372800	RC132V G5 36S/840 PSD W60L60 OCTP(a)ELB3	0 to +35 °C
01373500	RC132V G5 36S/840 PSU W60L60 NOC ELB3	0 to +35 °C
01386500	RC132V G5 36S/840 WIA W60L60 OC ELB3	0 to +35 °C
01387200	RC132V G5 36S/840 WIA W60L60 NOC ELB3	0 to +35 °C
01389600	RC132V G5 43S/840 WIA W60L60 NOC ELB3	0 to +35 °C
01394000	RC132V G5 43S/840 WIA W60L60 OC ELB3	0 to +35 °C
95000900	RC132V G5 36S/840 PSU W60L60 NOC	-10 to +40 °C

CoreLine panel

Order Code	Full Product Name	Ambient temperature range
95004700	RC132V G5 34S/830 PSU W60L60 OC	-10 to +40 °C
95005400	RC132V G5 36S/840 PSU W60L60 OC	-10 to +40 °C
95009200	RC132V G5 36S/840 PSD W60L60 OC	-10 to +40 °C
95010800	RC132V G5 48S/840 PSD W60L60 OC	-10 to +40 °C
95017700	RC132V G5 36S/940 PSD W60L60 OC	-10 to +40 °C

Order Code	Full Product Name	Ambient temperature range
95018400	RC132V G5 43S/940 PSD W60L60 OC	-10 to +40 °C
95364200	RC132V G5 36S/840 WIA W60L60 NOC	-10 to +40 °C
95367300	RC132V G5 36S/840 WIA W60L60 OC	-10 to +40 °C
95368000	RC132V G5 43S/840 WIA W60L60 OC	-10 to +40 °C
95380200	RC132V G5 36S/840 PSD W60L60 OC TP(a)	-10 to +40 °C

Controls and Dimming

Order Code	Full Product Name	Dimmable
01397100	RC132V G5 43S/840 SIA W60L60 OC IA4	Yes
01398800	RC132V G5 40S/830 SIA W60L60 OC IA4	Yes
95040500	RC132V G5 31_36_43S/940 PSD W30L120 OC	Yes
01369800	RC132V G5 36S/840 PSU W30L120 OC ELB3	No
01370400	RC132V G5 36S/840 PSD W30L120 OC ELB3	Yes
01375900	RC132V G5 36S/840 PSU W30L120 NOC ELB3	No
01388900	RC132V G5 36S/840 WIA W30L120 OC ELB3	Yes
95003000	RC132V G5 36S/840 PSU W30L120 NOC	No
95007800	RC132V G5 36S/840 PSU W30L120 OC	No
95013900	RC132V G5 36S/840 PSD W30L120 OC	Yes
95371000	RC132V G5 36S/840 WIA W30L120 OC	Yes
95031300	RC132V G5 31_36_43S/840 PSU W60L60 OC	No
95037500	RC132V G5 31_36_43S/840 PSD W60L60 OC	Yes
95030600	RC132V G5 29_34_40S/830 PSU W60L60 OC	No
50183699	RC132V 31_36_43S/840 PSU W60L60 OC UKI	No
01367400	RC132V G5 36S/840 PSD W60L60 OC ELB3	Yes
01368100	RC132V G5 36S/840 PSU W60L60 OC ELB3	No
01371100	RC132V G5 31_36_43S/840 PSD W60L60OCELB3	Yes

Order Code	Full Product Name	Dimmable
01372800	RC132V G5 36S/840 PSD W60L60 OCTP(a)ELB3	No
01373500	RC132V G5 36S/840 PSU W60L60 NOC ELB3	No
01386500	RC132V G5 36S/840 WIA W60L60 OC ELB3	Yes
01387200	RC132V G5 36S/840 WIA W60L60 NOC ELB3	Yes
01389600	RC132V G5 43S/840 WIA W60L60 NOC ELB3	Yes
01394000	RC132V G5 43S/840 WIA W60L60 OC ELB3	Yes
95000900	RC132V G5 36S/840 PSU W60L60 NOC	No
95004700	RC132V G5 34S/830 PSU W60L60 OC	No
95005400	RC132V G5 36S/840 PSU W60L60 OC	No
95009200	RC132V G5 36S/840 PSD W60L60 OC	Yes
95010800	RC132V G5 48S/840 PSD W60L60 OC	Yes
95017700	RC132V G5 36S/940 PSD W60L60 OC	Yes
95018400	RC132V G5 43S/940 PSD W60L60 OC	Yes
95364200	RC132V G5 36S/840 WIA W60L60 NOC	Yes
95367300	RC132V G5 36S/840 WIA W60L60 OC	Yes
95368000	RC132V G5 43S/840 WIA W60L60 OC	Yes
95380200	RC132V G5 36S/840 PSD W60L60 OC TP(a)	Yes

Approval and Application

Order Code	Full Product Name	Mech. impact protection code	Ingress protection code
01397100	RC132V G5 43S/840 SIA W60L60 OC IA4	IK03	IP20
01398800	RC132V G5 40S/830 SIA W60L60 OC IA4	IK03	IP20
95040500	RC132V G5 31_36_43S/940 PSD W30L120 OC	IK03	IP20/44
01369800	RC132V G5 36S/840 PSU W30L120 OC ELB3	IK03	IP20/44
01370400	RC132V G5 36S/840 PSD W30L120 OC ELB3	IK03	IP20/44
01375900	RC132V G5 36S/840 PSU W30L120 NOC ELB3	IK03	IP20/44
01388900	RC132V G5 36S/840 WIA W30L120 OC ELB3	IK03	IP20/44
95003000	RC132V G5 36S/840 PSU W30L120 NOC	IK03	IP20/44
95007800	RC132V G5 36S/840 PSU W30L120 OC	IK03	IP20/44
95013900	RC132V G5 36S/840 PSD W30L120 OC	IK03	IP20/44
95371000	RC132V G5 36S/840 WIA W30L120 OC	IK03	IP20/44
95031300	RC132V G5 31_36_43S/840 PSU W60L60 OC	IK03	IP20/44

Order Code	Full Product Name	Mech. impact protection code	Ingress protection code
95037500	RC132V G5 31_36_43S/840 PSD W60L60 OC	IK03	IP20/44
95030600	RC132V G5 29_34_40S/830 PSU W60L60 OC	IK03	IP20/44
50183699	RC132V 31_36_43S/840 PSU W60L60 OC UKI	IK02	IP20
01367400	RC132V G5 36S/840 PSD W60L60 OC ELB3	IK03	IP20/44
01368100	RC132V G5 36S/840 PSU W60L60 OC ELB3	IK03	IP20/44
01371100	RC132V G5 31_36_43S/840 PSD W60L60OCELB3	IK03	IP20/44
01372800	RC132V G5 36S/840 PSD W60L60 OCTP(a)ELB3	IK03	IP20/44
01373500	RC132V G5 36S/840 PSU W60L60 NOC ELB3	IK03	IP20/44
01386500	RC132V G5 36S/840 WIA W60L60 OC ELB3	IK03	IP20/44

CoreLine panel

Order Code	Full Product Name	Mech. impact protection code	Ingress protection code
01387200	RC132V G5 36S/840 WIA W60L60 NOC ELB3	IK03	IP20/44
01389600	RC132V G5 43S/840 WIA W60L60 NOC ELB3	IK03	IP20/44
01394000	RC132V G5 43S/840 WIA W60L60 OC ELB3	IK03	IP20/44
95000900	RC132V G5 36S/840 PSU W60L60 NOC	IK03	IP20/44
95004700	RC132V G5 34S/830 PSU W60L60 OC	IK03	IP20/44
95005400	RC132V G5 36S/840 PSU W60L60 OC	IK03	IP20/44
95009200	RC132V G5 36S/840 PSD W60L60 OC	IK03	IP20/44

Order Code	Full Product Name	Mech. impact protection code	Ingress protection code
95010800	RC132V G5 48S/840 PSD W60L60 OC	IK03	IP20/44
95017700	RC132V G5 36S/940 PSD W60L60 OC	IK03	IP20/44
95018400	RC132V G5 43S/940 PSD W60L60 OC	IK03	IP20/44
95364200	RC132V G5 36S/840 WIA W60L60 NOC	IK03	IP20/44
95367300	RC132V G5 36S/840 WIA W60L60 OC	IK03	IP20/44
95368000	RC132V G5 43S/840 WIA W60L60 OC	IK03	IP20/44
95380200	RC132V G5 36S/840 PSD W60L60 OC TP(a)	IK03	IP20/44

Initial Performance (IEC Compliant)

Order Code	Full Product Name	Initial chromaticity
01397100	RC132V G5 43S/840 SIA W60L60 OC IA4	(0.38, 0.38) SDCM≤3
01398800	RC132V G5 40S/830 SIA W60L60 OC IA4	(0.38, 0.38) SDCM≤3
95040500	RC132V G5 31_36_43S/940 PSD W30L120 OC	(0.38, 0.38) SDCM≤3
01369800	RC132V G5 36S/840 PSU W30L120 OC ELB3	(0.38, 0.38) SDCM≤3
01370400	RC132V G5 36S/840 PSD W30L120 OC ELB3	(0.38, 0.38) SDCM≤3
01375900	RC132V G5 36S/840 PSU W30L120 NOC ELB3	(0.38, 0.38) SDCM≤3
01388900	RC132V G5 36S/840 WIA W30L120 OC ELB3	(0.38, 0.38) SDCM≤3
95003000	RC132V G5 36S/840 PSU W30L120 NOC	(0.38, 0.38) SDCM≤3
95007800	RC132V G5 36S/840 PSU W30L120 OC	(0.38, 0.38) SDCM≤3
95013900	RC132V G5 36S/840 PSD W30L120 OC	(0.38, 0.38) SDCM≤3
95371000	RC132V G5 36S/840 WIA W30L120 OC	(0.38, 0.38) SDCM≤3
95031300	RC132V G5 31_36_43S/840 PSU W60L60 OC	(0.38, 0.38) SDCM≤3
95037500	RC132V G5 31_36_43S/840 PSD W60L60 OC	(0.38, 0.38) SDCM≤3
95030600	RC132V G5 29_34_40S/830 PSU W60L60 OC	(0.43, 0.40) SDCM≤3
50183699	RC132V 31_36_43S/840 PSU W60L60 OC UKI	(0.38, 0.38) SDCM ≤3
01367400	RC132V G5 36S/840 PSD W60L60 OC ELB3	(0.38, 0.38) SDCM≤3
01368100	RC132V G5 36S/840 PSU W60L60 OC ELB3	(0.38, 0.38) SDCM≤3
01371100	RC132V G5 31_36_43S/840 PSD W60L60OCELB3	(0.38, 0.38) SDCM≤3

Order Code	Full Product Name	Initial chromaticity
01372800	RC132V G5 36S/840 PSD W60L60 OCTP(a)ELB3	(0.38, 0.38) SDCM≤3
01373500	RC132V G5 36S/840 PSU W60L60 NOC ELB3	(0.38, 0.38) SDCM≤3
01386500	RC132V G5 36S/840 WIA W60L60 OC ELB3	(0.38, 0.38) SDCM≤3
01387200	RC132V G5 36S/840 WIA W60L60 NOC ELB3	(0.38, 0.38) SDCM≤3
01389600	RC132V G5 43S/840 WIA W60L60 NOC ELB3	(0.38, 0.38) SDCM≤3
01394000	RC132V G5 43S/840 WIA W60L60 OC ELB3	(0.38, 0.38) SDCM≤3
95000900	RC132V G5 36S/840 PSU W60L60 NOC	(0.38, 0.38) SDCM≤3
95004700	RC132V G5 34S/830 PSU W60L60 OC	(0.43, 0.40) SDCM≤3
95005400	RC132V G5 36S/840 PSU W60L60 OC	(0.38, 0.38) SDCM≤3
95009200	RC132V G5 36S/840 PSD W60L60 OC	(0.38, 0.38) SDCM≤3
95010800	RC132V G5 48S/840 PSD W60L60 OC	(0.38, 0.38) SDCM≤3
95017700	RC132V G5 36S/940 PSD W60L60 OC	(0.38, 0.38) SDCM≤3
95018400	RC132V G5 43S/940 PSD W60L60 OC	(0.38, 0.38) SDCM≤3
95364200	RC132V G5 36S/840 WIA W60L60 NOC	(0.38, 0.38) SDCM≤3
95367300	RC132V G5 36S/840 WIA W60L60 OC	(0.38, 0.38) SDCM≤3
95368000	RC132V G5 43S/840 WIA W60L60 OC	(0.38, 0.38) SDCM≤3
95380200	RC132V G5 36S/840 PSD W60L60 OC TP(a)	(0.38, 0.38) SDCM≤3

Application Conditions

Order Code	Full Product Name	Maximum dim level
01397100	RC132V G5 43S/840 SIA W60L60 OC IA4	-
01398800	RC132V G5 40S/830 SIA W60L60 OC IA4	-
95040500	RC132V G5 31_36_43S/940 PSD W30L120 OC	3%
01369800	RC132V G5 36S/840 PSU W30L120 OC ELB3	-
01370400	RC132V G5 36S/840 PSD W30L120 OC ELB3	3%
01375900	RC132V G5 36S/840 PSU W30L120 NOC ELB3	-
01388900	RC132V G5 36S/840 WIA W30L120 OC ELB3	1%
95003000	RC132V G5 36S/840 PSU W30L120 NOC	-
95007800	RC132V G5 36S/840 PSU W30L120 OC	-
95013900	RC132V G5 36S/840 PSD W30L120 OC	3%
95371000	RC132V G5 36S/840 WIA W30L120 OC	1%
95031300	RC132V G5 31_36_43S/840 PSU W60L60 OC	-
95037500	RC132V G5 31_36_43S/840 PSD W60L60 OC	3%
95030600	RC132V G5 29_34_40S/830 PSU W60L60 OC	-

Order Code	Full Product Name	Maximum dim level
50183699	RC132V 31_36_43S/840 PSU W60L60 OC UKI	-
01367400	RC132V G5 36S/840 PSD W60L60 OC ELB3	3%
01368100	RC132V G5 36S/840 PSU W60L60 OC ELB3	-
01371100	RC132V G5 31_36_43S/840 PSD W60L60OCELB3	3%
01372800	RC132V G5 36S/840 PSD W60L60 OCTP(a)ELB3	-
01373500	RC132V G5 36S/840 PSU W60L60 NOC ELB3	-
01386500	RC132V G5 36S/840 WIA W60L60 OC ELB3	1%
01387200	RC132V G5 36S/840 WIA W60L60 NOC ELB3	1%
01389600	RC132V G5 43S/840 WIA W60L60 NOC ELB3	1%
01394000	RC132V G5 43S/840 WIA W60L60 OC ELB3	1%
95000900	RC132V G5 36S/840 PSU W60L60 NOC	-
95004700	RC132V G5 34S/830 PSU W60L60 OC	-
95005400	RC132V G5 36S/840 PSU W60L60 OC	-
95009200	RC132V G5 36S/840 PSD W60L60 OC	3%

CoreLine panel

Order Code	Full Product Name	Maximum dim level
95010800	RC132V G5 48S/840 PSD W60L60 OC	3%
95017700	RC132V G5 36S/940 PSD W60L60 OC	3%
95018400	RC132V G5 43S/940 PSD W60L60 OC	3%
95364200	RC132V G5 36S/840 WIA W60L60 NOC	1%

Order Code	Full Product Name	Maximum dim level
95367300	RC132V G5 36S/840 WIA W60L60 OC	1%
95368000	RC132V G5 43S/840 WIA W60L60 OC	1%
95380200	RC132V G5 36S/840 PSD W60L60 OC TP(a)	3%

