



# CoreLine Pannello Generazione 4 - Quando la luce conta davvero

## Pannello CoreLine

Il CoreLine Pannello di Generazione 4 offre apparecchi di illuminazione innovativi, di facile utilizzo e di alta qualità, pronti per sostituire direttamente quelli esistenti nelle applicazioni di illuminazione generale. L'innovativo MultiColour/Lumen del CoreLine Pannello offre due tonalità di bianco e quattro pacchetti lumen in un unico apparecchio di illuminazione. Inoltre, grazie al nuovo connettore, l'installazione risulta semplice e rapida.

### Vantaggi

- La possibilità di scegliere tra luce bianca calda e fredda, con diverse emissioni in lumen, in un unico apparecchio per illuminazione.
- Riduzione dei costi operativi grazie al risparmio energetico e alla durata prolungata.
- Grazie al nuovo connettore, l'installazione è più semplice e veloce.

### Caratteristiche

- MultiColour/Lumen: 3000 K e 4000 K e diversa emissione in lumen tra 3400 lumen e 4300 lumen in uno stesso apparecchio per illuminazione.
- Efficienza energetica e lunga durata: fino a 125 lm/W e 50 khrs L80.
- Molteplici driver disponibili: on/off (PSU), dimmerabile (Dali) e connessione wireless integrata (Interact Ready).
- Versioni opzionali disponibili: illuminazione di emergenza (EL) e connettori Wieland/Adels (W).

# Pannello CoreLine

## Applicazione

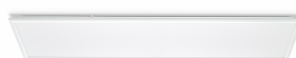
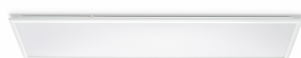
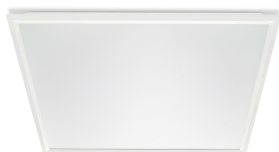
- Uffici
- Negozi
- Settore sanitario
- Istruzione

## Specifiche

<b>Tipo</b>	RC125B (versione dimensione modulo 600 mm) RC126B (versione dimensione modulo 625 mm)
<b>Tipo di controsoffitto</b>	Controsoffitto con profili a T a vista
<b>Profilo del controsoffitto</b>	Lunghezza modulo: 600 mm Lunghezza modulo: 625 mm
<b>Sorgente luminosa</b>	Modulo LED non sostituibile
<b>Potenza (+/-10%)</b>	41 W
<b>Angolo del fascio</b>	110°
<b>Flusso luminoso</b>	3400 lm
<b>Temperatura del colore correlata</b>	3000 K 4000 K
<b>Indice di resa dei colori</b>	> 80
<b>Vita utile media L70B50</b>	50.000 ore
<b>Vita utile media L80B50</b>	30.000 ore
<b>Vita utile media L90B50</b>	15.000 ore

<b>Frequenza di guasto driver</b>	0,38% per 5000 ore
<b>Temperatura ambiente media</b>	+25°C
<b>Intervallo temperatura operativa</b>	Da +10 a +40°C
<b>Driver</b>	Integrato
<b>Tensione di rete</b>	230 o 240 V / 50-60 Hz
<b>Materiale</b>	Corpo: acciaio zincato Bordo e diffusore: plastica Copertura ottica: PMMA
<b>Colore</b>	Bianco
<b>Connessione</b>	Connettore push-in (PI) o con estrazione a pressione (PIP)
<b>Manutenzione</b>	Modulo ottico sigillato per tutta la durata; pulizia interna non necessaria
<b>Installazione</b>	Individuale; a incasso in profili del controsoffitto a vista Collegamento elettrico continuo non possibile
<b>Note</b>	Cavo di sicurezza incluso

## Versions



CORELINE PANEL

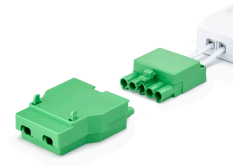
CORELINE PANEL

# Pannello CoreLine

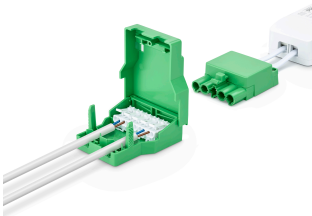
## Dati del prodotto



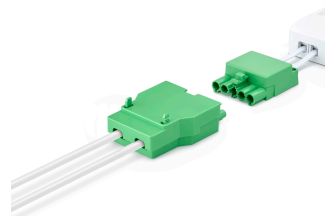
Edge View



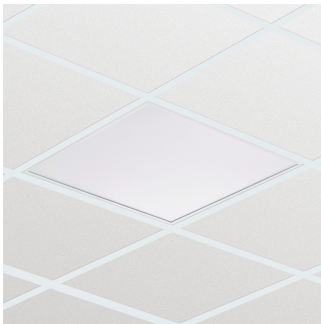
Coreline panel G5\_PSD connector  
Start\_Step 1



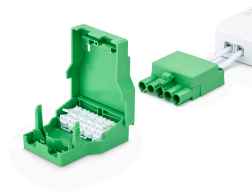
Coreline panel G5\_PSD connector  
Wired\_Step 3



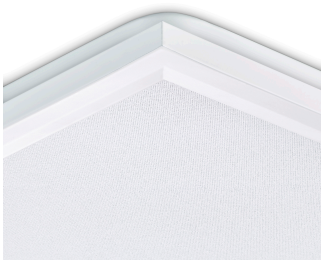
Coreline panel G5\_PSD connector  
Closed\_Step 4



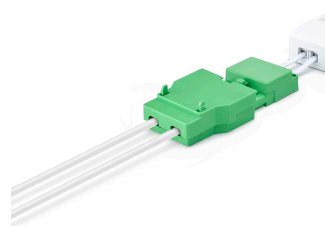
Coreline panel G5 Recessed  
Ceiling



Coreline panel G5\_PSD connector  
Open\_Step 2



Coreline panel G5 optical cover



Coreline panel G5\_PSD connector  
Finished\_Step 5

# Pannello CoreLine

## Dati del prodotto

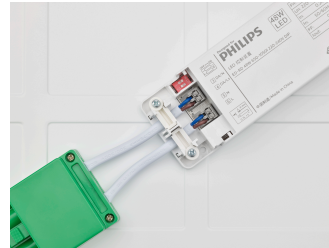
Coreline panel G5 side angle



CoreLine panel Gen 5 - On/off (PSU) driver & Quick Connector



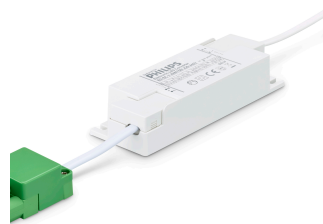
CoreLine Panel Gen 5 - Multilumen driver



Coreline panel G5 backside PSU driver



Coreline panel G5 PSU driver



Coreline panel G5 backside PSD driver



Coreline panel G5 PSD driver Lumenswitch



Surface mounted bracket



Surface mounted bracket



# Pannello CoreLine

## Dati del prodotto



Surface mounted bracket



Surface mounted bracket

## Accessori



Accessory

Ordercode 95397099



Accessory

Ordercode 95399499



Ordercode 95403899



Ordercode 911401861284,  
911401861384



Ordercode 36268799

## Condizioni di applicazione

Adatto per accensione casuale	Si
<b>Approvazione e applicazione</b>	
Codice protezione impatti meccanici	IK03
<b>Funzionamento e parte elettrica</b>	
Tensione in ingresso	220-240 V
<b>Informazioni generali</b>	
Marchio CE	Si
Classe di protezione IEC	Classe di isolamento II
Driver incluso	Si
Marchio ENEC	ENEC mark
Marchio di infiammabilità	F
Test filo incandescente	Temperatura 650 °C, durata 30 s
Sorgente luminosa sostituibile	No
Numero di unità elettriche	1 unit
<b>Rendimento iniziale (conformità IEC)</b>	
Tolleranza flusso luminoso	+/-10%
<b>Dati tecnici di illuminazione</b>	
Sfarfallio	1
Effetto stroboscopico	0,4
<b>Meccanica e corpo</b>	
Colore	Bianco RAL 9003

## Condizioni di applicazione

Order Code	Full Product Name	Intervallo temperatura ambiente	Livello regolazione massimo
01367400	RC132V G5 36S/840 PSD W60L60 OC ELB3	Da 0 a +35 °C	3%
01368100	RC132V G5 36S/840 PSU W60L60 OC ELB3	Da 0 a +35 °C	Non applicabile
01371100	RC132V G5 31_36_43S/840 PSD W60L60OCELB3	Da 0 a +35 °C	3%
01373500	RC132V G5 36S/840 PSU W60L60 NOC ELB3	Da 0 a +35 °C	Non applicabile
01374200	RC132V G5 34S/830 PSD W60L60 OC ELB3	Da 0 a +35 °C	3%
01386500	RC132V G5 36S/840 WIA W60L60 OC ELB3	Da 0 a +35 °C	1%
01387200	RC132V G5 36S/840 WIA W60L60 NOC ELB3	Da 0 a +35 °C	1%
01389600	RC132V G5 43S/840 WIA W60L60 NOC ELB3	Da 0 a +35 °C	1%
01394000	RC132V G5 43S/840 WIA W60L60 OC ELB3	Da 0 a +35 °C	1%
94999700	RC132V G5 34S/830 PSU W60L60 NOC	-10 to +40 °C	Non applicabile
95000900	RC132V G5 36S/840 PSU W60L60 NOC	-10 to +40 °C	Non applicabile
95004700	RC132V G5 34S/830 PSU W60L60 OC	-10 to +40 °C	Non applicabile
95005400	RC132V G5 36S/840 PSU W60L60 OC	-10 to +40 °C	Non applicabile
95008500	RC132V G5 34S/830 PSD W60L60 OC	-10 to +40 °C	3%
95009200	RC132V G5 36S/840 PSD W60L60 OC	-10 to +40 °C	3%
95010800	RC132V G5 48S/840 PSD W60L60 OC	-10 to +40 °C	3%
95014600	RC132V G5 36S/940 PSU W60L60 NOC	-10 to +40 °C	Non applicabile
95015300	RC132V G5 36S/940 PSU W60L60 OC	-10 to +40 °C	Non applicabile
95017700	RC132V G5 36S/940 PSD W60L60 OC	-10 to +40 °C	3%
95018400	RC132V G5 43S/940 PSD W60L60 OC	-10 to +40 °C	3%
95030600	RC132V G5 29_34_40S/830 PSU W60L60 OC	-10 to +40 °C	Non applicabile
95031300	RC132V G5 31_36_43S/840 PSU W60L60 OC	-10 to +40 °C	Non applicabile
95035100	RC132V G5 31_36_43S/840 PSU W60L60 NOC	-10 to +40 °C	Non applicabile
95036800	RC132V G5 29_34_40S/830 PSD W60L60 OC	-10 to +40 °C	3%
95037500	RC132V G5 31_36_43S/840 PSD W60L60 OC	-10 to +40 °C	3%
95040500	RC132V G5 31_36_43S/940 PSD W30L120 OC	-10 to +40 °C	3%
95363500	RC132V G5 34S/830 WIA W60L60 NOC	-10 to +40 °C	1%
95364200	RC132V G5 36S/840 WIA W60L60 NOC	-10 to +40 °C	1%
95366600	RC132V G5 34S/830 WIA W60L60 OC	-10 to +40 °C	1%
95367300	RC132V G5 36S/840 WIA W60L60 OC	-10 to +40 °C	1%
95368000	RC132V G5 43S/840 WIA W60L60 OC	-10 to +40 °C	1%
01369800	RC132V G5 36S/840 PSU W30L120 OC ELB3	Da 0 a +35 °C	Non applicabile
01370400	RC132V G5 36S/840 PSD W30L120 OC ELB3	Da 0 a +35 °C	3%
01388900	RC132V G5 36S/840 WIA W30L120 OC ELB3	Da 0 a +35 °C	1%
95007800	RC132V G5 36S/840 PSU W30L120 OC	-10 to +40 °C	Non applicabile
95012200	RC132V G5 34S/830 PSD W30L120 OC	-10 to +40 °C	3%
95013900	RC132V G5 36S/840 PSD W30L120 OC	-10 to +40 °C	3%
95016000	RC132V G5 36S/940 PSU W30L120 OC	-10 to +40 °C	Non applicabile
95371000	RC132V G5 36S/840 WIA W30L120 OC	-10 to +40 °C	1%
01375900	RC132V G5 36S/840 PSU W30L120 NOC ELB3	Da 0 a +35 °C	Non applicabile
95003000	RC132V G5 36S/840 PSU W30L120 NOC	-10 to +40 °C	Non applicabile
95365900	RC132V G5 36S/840 WIA W30L120 NOC	-10 to +40 °C	1%
01397100	RC132V G5 43S/840 SIA W60L60 OC IA4	Da 0 a +35 °C	Non applicabile
01398800	RC132V G5 40S/830 SIA W60L60 OC IA4	Da 0 a +35 °C	Non applicabile

## Approvazione e applicazione

Order Code	Full Product Name	Codice di protezione ingresso
01367400	RC132V G5 36S/840 PSD W60L60 OC ELB3	IP20/44
01368100	RC132V G5 36S/840 PSU W60L60 OC ELB3	IP20/44
01371100	RC132V G5 31_36_43S/840 PSD W60L60OCELB3	IP20/44
01373500	RC132V G5 36S/840 PSU W60L60 NOC ELB3	IP20/44
01374200	RC132V G5 34S/830 PSD W60L60 OC ELB3	IP20/44
01386500	RC132V G5 36S/840 WIA W60L60 OC ELB3	IP20/44
01387200	RC132V G5 36S/840 WIA W60L60 NOC ELB3	IP20/44
01389600	RC132V G5 43S/840 WIA W60L60 NOC ELB3	IP20/44
01394000	RC132V G5 43S/840 WIA W60L60 OC ELB3	IP20/44
94999700	RC132V G5 34S/830 PSU W60L60 NOC	IP20/44
95000900	RC132V G5 36S/840 PSU W60L60 NOC	IP20/44
95004700	RC132V G5 34S/830 PSU W60L60 OC	IP20/44
95005400	RC132V G5 36S/840 PSU W60L60 OC	IP20/44
95008500	RC132V G5 34S/830 PSD W60L60 OC	IP20/44
95009200	RC132V G5 36S/840 PSD W60L60 OC	IP20/44
95010800	RC132V G5 48S/840 PSD W60L60 OC	IP20/44
95014600	RC132V G5 36S/940 PSU W60L60 NOC	IP20/44
95015300	RC132V G5 36S/940 PSU W60L60 OC	IP20/44
95017700	RC132V G5 36S/940 PSD W60L60 OC	IP20/44
95018400	RC132V G5 43S/940 PSD W60L60 OC	IP20/44
95030600	RC132V G5 29_34_40S/830 PSU W60L60 OC	IP20/44
95031300	RC132V G5 31_36_43S/840 PSU W60L60 OC	IP20/44

Order Code	Full Product Name	Codice di protezione ingresso
95035100	RC132V G5 31_36_43S/840 PSU W60L60 NOC	IP20/44
95036800	RC132V G5 29_34_40S/830 PSD W60L60 OC	IP20/44
95037500	RC132V G5 31_36_43S/840 PSD W60L60 OC	IP20/44
95040500	RC132V G5 31_36_43S/940 PSD W30L120 OC	IP20/44
95363500	RC132V G5 34S/830 WIA W60L60 NOC	IP20/44
95364200	RC132V G5 36S/840 WIA W60L60 NOC	IP20/44
95366600	RC132V G5 34S/830 WIA W60L60 OC	IP20/44
95367300	RC132V G5 36S/840 WIA W60L60 OC	IP20/44
95368000	RC132V G5 43S/840 WIA W60L60 OC	IP20/44
01369800	RC132V G5 36S/840 PSU W30L120 OC ELB3	IP20/44
01370400	RC132V G5 36S/840 PSD W30L120 OC ELB3	IP20/44
01388900	RC132V G5 36S/840 WIA W30L120 OC ELB3	IP20/44
95007800	RC132V G5 36S/840 PSU W30L120 OC	IP20/44
95012200	RC132V G5 34S/830 PSD W30L120 OC	IP20/44
95013900	RC132V G5 36S/840 PSD W30L120 OC	IP20/44
95016000	RC132V G5 36S/940 PSU W30L120 OC	IP20/44
95371000	RC132V G5 36S/840 WIA W30L120 OC	IP20/44
01375900	RC132V G5 36S/840 PSU W30L120 NOC ELB3	IP20/44
95003000	RC132V G5 36S/840 PSU W30L120 NOC	IP20/44
95365900	RC132V G5 36S/840 WIA W30L120 NOC	IP20/44
01397100	RC132V G5 43S/840 SIA W60L60 OC IA4	IP20
01398800	RC132V G5 40S/830 SIA W60L60 OC IA4	IP20

## Controlli e regolazione del flusso

Order Code	Full Product Name	Regolabile
01367400	RC132V G5 36S/840 PSD W60L60 OC ELB3	Si
01368100	RC132V G5 36S/840 PSU W60L60 OC ELB3	No
01371100	RC132V G5 31_36_43S/840 PSD W60L60OCELB3	Si
01373500	RC132V G5 36S/840 PSU W60L60 NOC ELB3	No
01374200	RC132V G5 34S/830 PSD W60L60 OC ELB3	Si
01386500	RC132V G5 36S/840 WIA W60L60 OC ELB3	Si
01387200	RC132V G5 36S/840 WIA W60L60 NOC ELB3	Si
01389600	RC132V G5 43S/840 WIA W60L60 NOC ELB3	Si
01394000	RC132V G5 43S/840 WIA W60L60 OC ELB3	Si
94999700	RC132V G5 34S/830 PSU W60L60 NOC	No
95000900	RC132V G5 36S/840 PSU W60L60 NOC	No
95004700	RC132V G5 34S/830 PSU W60L60 OC	No
95005400	RC132V G5 36S/840 PSU W60L60 OC	No
95008500	RC132V G5 34S/830 PSD W60L60 OC	Si
95009200	RC132V G5 36S/840 PSD W60L60 OC	Si
95010800	RC132V G5 48S/840 PSD W60L60 OC	Si
95014600	RC132V G5 36S/940 PSU W60L60 NOC	No
95015300	RC132V G5 36S/940 PSU W60L60 OC	No
95017700	RC132V G5 36S/940 PSD W60L60 OC	Si
95018400	RC132V G5 43S/940 PSD W60L60 OC	Si
95030600	RC132V G5 29_34_40S/830 PSU W60L60 OC	No
95031300	RC132V G5 31_36_43S/840 PSU W60L60 OC	No

Order Code	Full Product Name	Regolabile
95035100	RC132V G5 31_36_43S/840 PSU W60L60 NOC	No
95036800	RC132V G5 29_34_40S/830 PSD W60L60 OC	Si
95037500	RC132V G5 31_36_43S/840 PSD W60L60 OC	Si
95040500	RC132V G5 31_36_43S/940 PSD W30L120 OC	Si
95363500	RC132V G5 34S/830 WIA W60L60 NOC	Si
95364200	RC132V G5 36S/840 WIA W60L60 NOC	Si
95366600	RC132V G5 34S/830 WIA W60L60 OC	Si
95367300	RC132V G5 36S/840 WIA W60L60 OC	Si
95368000	RC132V G5 43S/840 WIA W60L60 OC	Si
01369800	RC132V G5 36S/840 PSU W30L120 OC ELB3	No
01370400	RC132V G5 36S/840 PSD W30L120 OC ELB3	Si
01388900	RC132V G5 36S/840 WIA W30L120 OC ELB3	Si
95007800	RC132V G5 36S/840 PSU W30L120 OC	No
95012200	RC132V G5 34S/830 PSD W30L120 OC	Si
95013900	RC132V G5 36S/840 PSD W30L120 OC	Si
95016000	RC132V G5 36S/940 PSU W30L120 OC	No
95371000	RC132V G5 36S/840 WIA W30L120 OC	Si
01375900	RC132V G5 36S/840 PSU W30L120 NOC ELB3	No
95003000	RC132V G5 36S/840 PSU W30L120 NOC	No
95365900	RC132V G5 36S/840 WIA W30L120 NOC	Si
01397100	RC132V G5 43S/840 SIA W60L60 OC IA4	Si
01398800	RC132V G5 40S/830 SIA W60L60 OC IA4	Si

## Informazioni generali

## Pannello CoreLine

Order Code	Full Product Name	Angolo del fascio della sorgente luminosa	Tipo di ottica	Codice famiglia prodotto
01367400	RC132V G5 36S/840 PSD W60L60 OC ELB3	- °	90	RC132V
01368100	RC132V G5 36S/840 PSU W60L60 OC ELB3	- °	90	RC132V
01371100	RC132V G5 31_36_43S/840 PSD W60L60OCEL3	- °	90	RC132V
01373500	RC132V G5 36S/840 PSU W60L60 NOC ELB3	- °	120	RC132V
01374200	RC132V G5 34S/830 PSD W60L60 OC ELB3	- °	90	RC132V
01386500	RC132V G5 36S/840 WIA W60L60 OC ELB3	- °	90	RC132V
01387200	RC132V G5 36S/840 WIA W60L60 NOC ELB3	- °	120	RC132V
01389600	RC132V G5 43S/840 WIA W60L60 NOC ELB3	- °	120	RC132V
01394000	RC132V G5 43S/840 WIA W60L60 OC ELB3	- °	90	RC132V
94999700	RC132V G5 34S/830 PSU W60L60 NOC	- °	120	-
95000900	RC132V G5 36S/840 PSU W60L60 NOC	- °	120	-
95004700	RC132V G5 34S/830 PSU W60L60 OC	- °	90	-
95005400	RC132V G5 36S/840 PSU W60L60 OC	- °	90	-
95008500	RC132V G5 34S/830 PSD W60L60 OC	- °	90	-
95009200	RC132V G5 36S/840 PSD W60L60 OC	- °	90	-
95010800	RC132V G5 48S/840 PSD W60L60 OC	- °	90	-
95014600	RC132V G5 36S/940 PSU W60L60 NOC	- °	120	-
95015300	RC132V G5 36S/940 PSU W60L60 OC	- °	90	-
95017700	RC132V G5 36S/940 PSD W60L60 OC	- °	90	-
95018400	RC132V G5 43S/940 PSD W60L60 OC	- °	90	-
95030600	RC132V G5 29_34_40S/830 PSU W60L60 OC	- °	90	-
95031300	RC132V G5 31_36_43S/840 PSU W60L60 OC	- °	90	-

Order Code	Full Product Name	Angolo del fascio della sorgente luminosa	Tipo di ottica	Codice famiglia prodotto
95035100	RC132V G5 31_36_43S/840 PSU W60L60 NOC	- °	120	-
95036800	RC132V G5 29_34_40S/830 PSD W60L60 OC	- °	90	-
95037500	RC132V G5 31_36_43S/840 PSD W60L60 OC	- °	90	-
95040500	RC132V G5 31_36_43S/940 PSD W30L120 OC	- °	90	-
95363500	RC132V G5 34S/830 WIA W60L60 NOC	- °	120	-
95364200	RC132V G5 36S/840 WIA W60L60 NOC	- °	120	-
95366600	RC132V G5 34S/830 WIA W60L60 OC	- °	90	-
95367300	RC132V G5 36S/840 WIA W60L60 OC	- °	90	-
95368000	RC132V G5 43S/840 WIA W60L60 OC	- °	90	-
01369800	RC132V G5 36S/840 PSU W30L120 OC ELB3	- °	90	RC132V
01370400	RC132V G5 36S/840 PSD W30L120 OC ELB3	- °	90	RC132V
01388900	RC132V G5 36S/840 WIA W30L120 OC ELB3	- °	90	RC132V
95007800	RC132V G5 36S/840 PSU W30L120 OC	- °	90	-
95012200	RC132V G5 34S/830 PSD W30L120 OC	- °	90	-
95013900	RC132V G5 36S/840 PSD W30L120 OC	- °	90	-
95016000	RC132V G5 36S/940 PSU W30L120 OC	- °	90	-
95371000	RC132V G5 36S/840 WIA W30L120 OC	- °	90	-
01375900	RC132V G5 36S/840 PSU W30L120 NOC ELB3	- °	120	RC132V
95003000	RC132V G5 36S/840 PSU W30L120 NOC	- °	120	-
95365900	RC132V G5 36S/840 WIA W30L120 NOC	- °	120	-
01397100	RC132V G5 43S/840 SIA W60L60 OC IA4	-	90	RC132V
01398800	RC132V G5 40S/830 SIA W60L60 OC IA4	-	90	RC132V

### Rendimento iniziale (conformità IEC) (1/2)



## Pannello CoreLine

Order Code	Full Product Name	Cromaticità iniziale	Temperatura di colore corr. Iniziale	Indice di resa dei colori		Efficienza iniziale LED
				Temperatura di colore corr. Iniziale	Indice di resa dei colori iniz.	
01367400	RC132V G5 36S/840 PSD W60L60 OC ELB3	(0.38, 0.38) SDCM≤3	4000 K	>80		106 lm/W
01368100	RC132V G5 36S/840 PSU W60L60 OC ELB3	(0.38, 0.38) SDCM≤3	4000 K	>80		106 lm/W
01371100	RC132V G5 31_36_43S/840 PSD W60L60OCELB3	(0.38, 0.38) SDCM≤3	4000 K	>80		107 lm/W
01373500	RC132V G5 36S/840 PSU W60L60 NOC ELB3	(0.38, 0.38) SDCM≤3	4000 K	>80		106 lm/W
01374200	RC132V G5 34S/830 PSD W60L60 OC ELB3	(0.43, 0.40) SDCM≤3	3000 K	>80		100 lm/W
01386500	RC132V G5 36S/840 WIA W60L60 OC ELB3	(0.38, 0.38) SDCM≤3	4000 K	>80		107 lm/W
01387200	RC132V G5 36S/840 WIA W60L60 NOC ELB3	(0.38, 0.38) SDCM≤3	4000 K	>80		107 lm/W
01389600	RC132V G5 43S/840 WIA W60L60 NOC ELB3	(0.38, 0.38) SDCM≤3	4000 K	>80		128 lm/W
01394000	RC132V G5 43S/840 WIA W60L60 OC ELB3	(0.38, 0.38) SDCM≤3	4000 K	>80		128 lm/W
94999700	RC132V G5 34S/830 PSU W60L60 NOC	(0.43, 0.40) SDCM≤3	3000 K	>80		119 lm/W
95000900	RC132V G5 36S/840 PSU W60L60 NOC	(0.38, 0.38) SDCM≤3	4000 K	>80		126 lm/W
95004700	RC132V G5 34S/830 PSU W60L60 OC	(0.43, 0.40) SDCM≤3	3000 K	>80		119 lm/W
95005400	RC132V G5 36S/840 PSU W60L60 OC	(0.38, 0.38) SDCM≤3	4000 K	>80		126 lm/W
95008500	RC132V G5 34S/830 PSD W60L60 OC	(0.43, 0.40) SDCM≤3	3000 K	>80		119 lm/W
95009200	RC132V G5 36S/840 PSD W60L60 OC	(0.38, 0.38) SDCM≤3	4000 K	>80		126 lm/W
95010800	RC132V G5 48S/840 PSD W60L60 OC	(0.38, 0.38) SDCM≤3	4000 K	>80		120 lm/W
95014600	RC132V G5 36S/940 PSU W60L60 NOC	(0.38, 0.38) SDCM≤3	4000 K	>90		104 lm/W
95015300	RC132V G5 36S/940 PSU W60L60 OC	(0.38, 0.38) SDCM≤3	4000 K	>90		104 lm/W
95017700	RC132V G5 36S/940 PSD W60L60 OC	(0.38, 0.38) SDCM≤3	4000 K	>90		104 lm/W

Order Code	Full Product Name	Cromaticità iniziale	Temperatura di colore corr. Iniziale	Indice di resa dei colori		Efficienza iniziale LED
				Temperatura di colore corr. Iniziale	Indice di resa dei colori iniz.	
95018400	RC132V G5 43S/940 PSD W60L60 OC	(0.38, 0.38) SDCM≤3	4000 K	>90		108 lm/W
95030600	RC132V G5 29_34_40S/830 PSU W60L60 OC	(0.43, 0.40) SDCM≤3	3000 K	>80		116 lm/W
95031300	RC132V G5 31_36_43S/840 PSU W60L60 OC	(0.38, 0.38) SDCM≤3	4000 K	>80		125 lm/W
95035100	RC132V G5 31_36_43S/840 PSU W60L60 NOC	(0.38, 0.38) SDCM≤3	4000 K	>80		125 lm/W
95036800	RC132V G5 29_34_40S/830 PSD W60L60 OC	(0.43, 0.40) SDCM≤3	3000 K	>80		116 lm/W
95037500	RC132V G5 31_36_43S/840 PSD W60L60 OC	(0.38, 0.38) SDCM≤3	4000 K	>80		125 lm/W
95040500	RC132V G5 31_36_43S/940 PSD W30L120 OC	(0.38, 0.38) SDCM≤3	4000 K	>90		108 lm/W
95363500	RC132V G5 34S/830 WIA W60L60 NOC	(0.43, 0.40) SDCM≤3	3000 K	>80		119 lm/W
95364200	RC132V G5 36S/840 WIA W60L60 NOC	(0.38, 0.38) SDCM≤3	4000 K	>80		126 lm/W
95366600	RC132V G5 34S/830 WIA W60L60 OC	(0.43, 0.40) SDCM≤3	3000 K	>80		119 lm/W
95367300	RC132V G5 36S/840 WIA W60L60 OC	(0.38, 0.38) SDCM≤3	4000 K	>80		126 lm/W
95368000	RC132V G5 43S/840 WIA W60L60 OC	(0.38, 0.38) SDCM≤3	4000 K	>80		125 lm/W
01369800	RC132V G5 36S/840 PSU W30L120 OC ELB3	(0.38, 0.38) SDCM≤3	4000 K	>80		106 lm/W
01370400	RC132V G5 36S/840 PSD W30L120 OC ELB3	(0.38, 0.38) SDCM≤3	4000 K	>80		106 lm/W
01388900	RC132V G5 36S/840 WIA W30L120 OC ELB3	(0.38, 0.38) SDCM≤3	4000 K	>80		107 lm/W
95007800	RC132V G5 36S/840 PSU W30L120 OC	(0.38, 0.38) SDCM≤3	4000 K	>80		126 lm/W
95012200	RC132V G5 34S/830 PSD W30L120 OC	(0.43, 0.40) SDCM≤3	3000 K	>80		119 lm/W
95013900	RC132V G5 36S/840 PSD W30L120 OC	(0.38, 0.38) SDCM≤3	4000 K	>80		126 lm/W
95016000	RC132V G5 36S/940 PSU W30L120 OC	(0.38, 0.38) SDCM≤3	4000 K	>90		104 lm/W

## Pannello CoreLine

Order Code	Full Product Name	Cromaticità iniziale	Temperatura di colore corr. Iniziale	Indice di resa dei colori		Efficienza iniziale LED
				Temperatura di colore corr. Iniziale	Indice di resa dei colori iniz.	
95371000	RC132V G5 36S/840 WIA W30L120 OC	(0.38, 0.38) SDCM≤3	4000 K	>80		126 lm/W
01375900	RC132V G5 36S/840 PSU W30L120 NOC ELB3	(0.38, 0.38) SDCM≤3	4000 K	>80		106 lm/W
95003000	RC132V G5 36S/840 PSU W30L120 NOC	(0.38, 0.38) SDCM≤3	4000 K	>80		126 lm/W

Order Code	Full Product Name	Cromaticità iniziale	Temperatura di colore corr. Iniziale	Indice di resa dei colori		Efficienza iniziale LED
				Temperatura di colore corr. Iniziale	Indice di resa dei colori iniz.	
95365900	RC132V G5 36S/840 WIA W30L120 NOC	(0.38, 0.38) SDCM≤3	4000 K	>80		126 lm/W
01397100	RC132V G5 43S/840 SIA W60L60 OC IA4	(0.38, 0.38) SDCM≤3	4000 K	>80		119 lm/W
01398800	RC132V G5 40S/830 SIA W60L60 OC IA4	(0.38, 0.38) SDCM≤3	3000 K	>80		111 lm/W

### Rendimento iniziale (conformità IEC) (2/2)

Order Code	Full Product Name	Flusso luminoso iniziale	Potenza in ingresso iniziale
01367400	RC132V G5 36S/840 PSD W60L60 OC ELB3	3600 lm	34 W
01368100	RC132V G5 36S/840 PSU W60L60 OC ELB3	3600 lm	34 W
01371100	RC132V G5 31_36_43S/840 PSD W60L60OCELB3	4300 lm	40 W
01373500	RC132V G5 36S/840 PSU W60L60 NOC ELB3	3600 lm	34 W
01374200	RC132V G5 34S/830 PSD W60L60 OC ELB3	3400 lm	34 W
01386500	RC132V G5 36S/840 WIA W60L60 OC ELB3	3600 lm	34 W
01387200	RC132V G5 36S/840 WIA W60L60 NOC ELB3	3600 lm	34 W
01389600	RC132V G5 43S/840 WIA W60L60 NOC ELB3	4300 lm	34 W
01394000	RC132V G5 43S/840 WIA W60L60 OC ELB3	4300 lm	34 W
94999700	RC132V G5 34S/830 PSU W60L60 NOC	3400 lm	28.5 W
95000900	RC132V G5 36S/840 PSU W60L60 NOC	3600 lm	28.5 W
95004700	RC132V G5 34S/830 PSU W60L60 OC	3400 lm	28.5 W
95005400	RC132V G5 36S/840 PSU W60L60 OC	3600 lm	28.5 W
95008500	RC132V G5 34S/830 PSD W60L60 OC	3400 lm	28.5 W
95009200	RC132V G5 36S/840 PSD W60L60 OC	3600 lm	28.5 W
95010800	RC132V G5 48S/840 PSD W60L60 OC	4800 lm	40 W
95014600	RC132V G5 36S/940 PSU W60L60 NOC	3600 lm	34.5 W
95015300	RC132V G5 36S/940 PSU W60L60 OC	3600 lm	34.5 W
95017700	RC132V G5 36S/940 PSD W60L60 OC	3600 lm	34.5 W
95018400	RC132V G5 43S/940 PSD W60L60 OC	4300 lm	40 W
95030600	RC132V G5 29_34_40S/830 PSU W60L60 OC	4000 lm	34.5 W
95031300	RC132V G5 31_36_43S/840 PSU W60L60 OC	4300 lm	34.5 W

Order Code	Full Product Name	Flusso luminoso iniziale	Potenza in ingresso iniziale
95035100	RC132V G5 31_36_43S/840 PSU W60L60 NOC	4300 lm	34.5 W
95036800	RC132V G5 29_34_40S/830 PSD W60L60 OC	4000 lm	34.5 W
95037500	RC132V G5 31_36_43S/840 PSD W60L60 OC	4300 lm	34.5 W
95040500	RC132V G5 31_36_43S/940 PSD W30L120 OC	4300 lm	40 W
95363500	RC132V G5 34S/830 WIA W60L60 NOC	3400 lm	28.5 W
95364200	RC132V G5 36S/840 WIA W60L60 NOC	3600 lm	28.5 W
95366600	RC132V G5 34S/830 WIA W60L60 OC	3400 lm	28.5 W
95367300	RC132V G5 36S/840 WIA W60L60 OC	3600 lm	28.5 W
95368000	RC132V G5 43S/840 WIA W60L60 OC	4300 lm	34.5 W
01369800	RC132V G5 36S/840 PSU W30L120 OC ELB3	3600 lm	34 W
01370400	RC132V G5 36S/840 PSD W30L120 OC ELB3	3600 lm	34 W
01388900	RC132V G5 36S/840 WIA W30L120 OC ELB3	3600 lm	34 W
95007800	RC132V G5 36S/840 PSU W30L120 OC	3600 lm	28.5 W
95012200	RC132V G5 34S/830 PSD W30L120 OC	3400 lm	28.5 W
95013900	RC132V G5 36S/840 PSD W30L120 OC	3600 lm	28.5 W
95016000	RC132V G5 36S/940 PSU W30L120 OC	3600 lm	34.5 W
95371000	RC132V G5 36S/840 WIA W30L120 OC	3600 lm	28.5 W
01375900	RC132V G5 36S/840 PSU W30L120 NOC ELB3	3600 lm	34 W
95003000	RC132V G5 36S/840 PSU W30L120 NOC	3600 lm	28.5 W
95365900	RC132V G5 36S/840 WIA W30L120 NOC	3600 lm	28.5 W
01397100	RC132V G5 43S/840 SIA W60L60 OC IA4	4300 lm	36 W
01398800	RC132V G5 40S/830 SIA W60L60 OC IA4	4000 lm	36 W

