



CoreView Panel – smooth surface of light

CoreView Panel

People appreciate indoor spaces that are easy on the eye and at the same time refreshing to the mind. This is especially relevant for spaces where you want to ensure a relaxing yet energizing atmosphere, e.g. in working environments, retail and healthcare. CoreView Panel is a LED-based luminaire with an innovative, slim shape that delivers a uniform surface of light – a truly attractive proposition. Suitable for recessed (lay-in only) and suspended mounting, the range offers a choice of sizes, color temperatures and DALI dimming. In addition, it comes with all the benefits of LED technology: it is, for example, long-lasting and energy-efficient. In short, CoreView Panel represents an excellent deal for those looking for pleasant and efficient lighting.

Benefits

- Pleasing surface of light
- Slim, attractive form factor
- Energy-efficient

Features

- Uniform surface of light, thanks to advanced light-guide technology
- Very slim panel height, thanks to side-lit LED lighting
- Low energy consumption, thanks to efficient LED technology
- Choice of sizes and two color temperatures
- Available with fixed or dimmable driver

Application

- Offices
- Retail
- Healthcare

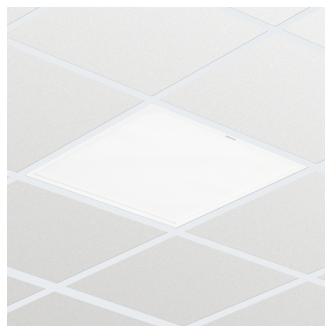
Specifications

CoreView Panel

Type	RC165V (module size 600 mm version)
	RC166V (module size 625 mm version)
Ceiling type	Exposed T-bar ceiling
Ceiling grid	Module size in length: 600 mm
	Module size in length: 625 mm
Light source	Non-replaceable LED module
Power (+/-10%)	41 W
Beam angle	110°
Luminous flux	3400 lm
Correlated Color	3000 K
Temperature	4000 K
Color Rendering Index	> 80
Median useful life L70B50	65,000 hours
Median useful life L80B50	40,000 hours
Median useful life L90B50	25,000 hours
Driver failure rate	0,38% per 5000 hours
Average ambient temperature	+25 °C

Operating temperature range	+10 to +40°C
Driver	Built-in
Dimming	DALI
Mains voltage	230 or 240 V / 50-60 Hz
Material	Housing: steel
	Rim and diffuser: plastic
	Optical cover: PMMA
Color	White
Connection	Push-in connector with pull relief (PIP)
Maintenance	Optical module sealed for life; no internal cleaning required
Installation	Exposed ceilings: in lay, no brackets needed
	Individual; suspended mounting with a set of four single steel-wire suspensions including a metal-like power cord, 150 cm and ceiling cap (SM4)
Remarks	Suspension kit including 4 individual steel cables with Reutlinger clutch device and ceiling cab available (to be ordered separately)

Versions



Product details



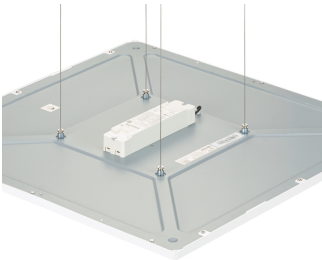
CoreView panel, suspended square version



CoreView panel, recessed square version (module size 600)

CoreView Panel

Product details



Connection suspension wires



Different rim sizes available



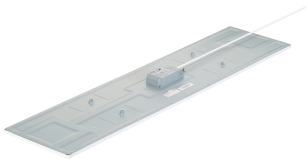
Top view square version (module size 600)



CoreView panel, suspended rectangular version



CoreView panel, recessed rectangular version (module size 300x1200)



Top view rectangular version



Connecting the PSD driver (module size 600 version)

CoreView Panel

Accessories



Set of accessories (4x Reutlinger,
with steel cable, etc.)

Ordercode 910930030118

CoreView Panel

Application Conditions

Ambient temperature range	+10 to +40 °C
Average ambient temperature	25 °C
Suitable for random switching	Yes (relates to presence/movement detection and daylight harvesting)

Approval and Application

Mech. impact protection code	IK02
Ingress protection code	IP20

Operating and Electrical

Input Voltage	220 to 240 V
---------------	--------------

General Information

CE mark	CE mark
Protection class IEC	Safety class II
Driver included	Yes
ENEC mark	ENEC mark
Flammability mark	For mounting on normally flammable surfaces
Lamp family code	LED34S
Light source replaceable	No
Number of light sources	1 pc
Product Family Code	RC165V
UL mark	-

Initial Performance (IEC Compliant)

Initial LED luminaire efficacy	83 lm/W
Initial luminous flux	3400 lm
Initial input power	41 W

Mechanical and Housing

Color	White
-------	-------

Over Time Performance (IEC Compliant)

Driver failure rate at 5000 h	0.38 %
Median useful life L80B50	40000 h
Median useful life L90B50	20000 h

Controls and Dimming

Order Code	Full Product Name	Dimmable
910503910029	RC165V LED34S/840 PSU W60L60	No
910503910033	RC165V LED34S/840 PSD W60L60	Yes
910503910035	RC165V LED34S/840 PSD W30L120	Yes
910503910036	RC165V LED34S/830 PSD W30L120	Yes

Initial Performance (IEC Compliant)

Order Code	Full Product Name	Initial chromaticity	Init. Corr. Color Temperature
910503910029	RC165V LED34S/840 PSU W60L60	(0.38, 0.38) SDCM <5	4000 K
910503910033	RC165V LED34S/840 PSD W60L60	(0.38, 0.38) SDCM <5	4000 K

Order Code	Full Product Name	Initial chromaticity	Init. Corr. Color Temperature
910503910035	RC165V LED34S/840 PSD W30L120	(0.38, 0.38) SDCM <5	4000 K
910503910036	RC165V LED34S/830 PSD W30L120	(0.44, 0.41) SDCM <5	3000 K

Mechanical and Housing

CoreView Panel

Order Code	Full Product Name	Geometry
910503910029	RC165V LED34S/840 PSU W60L60	Width 0.60 m, length 0.60 m
910503910033	RC165V LED34S/840 PSD W60L60	Width 0.60 m, length 0.60 m

Order Code	Full Product Name	Geometry
910503910035	RC165V LED34S/840 PSD W30L120	Width 0.30 m, length 1.20 m
910503910036	RC165V LED34S/830 PSD W30L120	Width 0.30 m, length 1.20 m

