



Tempo – compact and consistent

Tempo 2 RVP251

Tempo is a complete floodlighting range offering a wide choice of lamp types and symmetrical and asymmetrical reflectors. It is ideally suited to a variety of outdoor applications – from architectural, facade and billboard lighting to area and (recreational) sports lighting. Besides the Tempo 1, 2 and 3 versions, the range features the high-power Tempo 4, which is available with a variety of light sources up to 2000 W and features an external gear unit. Designed for medium to large-scale floodlighting of sports facilities and similar areas, it is available in single or double-lamp versions and with a choice of narrow or wide-beam optics. The Tempo series' compact housing guarantees optimum visual integration. Anodized-aluminum reflectors ensure a highly efficient beam distribution, while the nylon bolt caps feature a goniometric aiming device for easy adjustment and alignment. Access to the lamp and gear is quick and easy, via the hinged front glass with its quick-release stainless-steel clips. All Tempo luminaires are RoHS-compliant.

Benefits

- Wide choice of lamp types and symmetrical or asymmetrical reflectors for highly efficient beam distribution
- Ideal for a variety of outdoor applications from architectural, facade and billboard lighting to area and (leisure) sports lighting
- Optimal visual integration with compact housing and metallic grey finish

Features

- Wide choice of lamp types
- Symmetrical and asymmetrical reflectors
- Compact housing with metallic grey finish
- Aiming device
- Hinged front glass with quick-release clips

Tempo 2 RVP251

Application

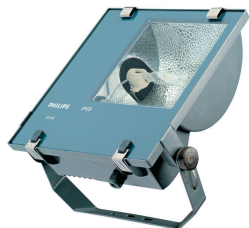
- Area lighting

Specifications

Type	RVP251
Light source	HID: <ul style="list-style-type: none">- 1 x MASTERColour CDM-TD / RX7s / 70, 150 W- 1 x MHN-TD / RX7s / 70, 150 W- 1 x SON-T / E27 / 70 W- 1 x SON-T / E40 / 150 W
Lamp included	Yes (K or light color 830 or 842)
Gear and compensation (integrated)	Electromagnetic (low loss), 230 or 240 V / 50 Hz: <ul style="list-style-type: none">- Inductive (IN)- Inductive, parallel compensated (IC)
Optic	Asymmetrical (A) Symmetrical (S)
Materials and finishing	Housing: die-cast aluminum, corrosion-resistant powder coating Glass: thermally hardened, 4 mm thick Gasket: premium bonded silicone Mounting bracket: steel Aiming device cap: nylon Fixation clips: stainless steel Reflector: anodized, high-purity aluminum

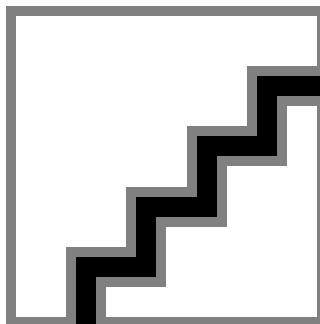
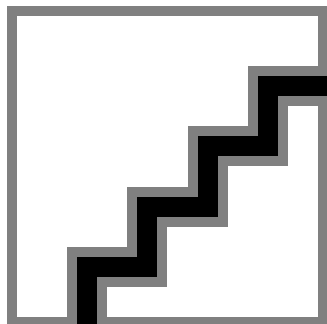
Color	Grey, RAL 9007, powder-coated Color-matched bracket, grommet and hinges
Installation	Ceiling, wall or floor mounting Cable entry via M20 cable gland Ambient temperature outdoor: 35°C Drag factor (SCx): 0.138 m Max adjustment from the horizontal: 175°
Maintenance	Hinged front glass with quick-release clips for in-position lamp replacement No internal cleaning required
Main applications	Area, facade, billboard, architectural lighting

Versions



Tempo 2 RVP251 area flood-lighting
luminaire

Product details



Tempo 2 RVP251

Product details

