



Tempo – compact and consistent

Tempo 3 RVP351

Tempo is a complete floodlighting range offering a wide choice of lamp types and symmetrical and asymmetrical reflectors. It is ideally suited to a variety of outdoor applications – from architectural, facade and billboard lighting to area and (recreational) sports lighting. Besides the Tempo 1, 2 and 3 versions, the range features the high-power Tempo 4, which is available with a variety of light sources up to 2000 W and features an external gear unit. Designed for medium to large-scale floodlighting of sports facilities and similar areas, it is available in single or double-lamp versions and with a choice of narrow or wide-beam optics. The Tempo series' compact housing guarantees optimum visual integration. Anodized-aluminum reflectors ensure a highly efficient beam distribution, while the nylon bolt caps feature a goniometric aiming device for easy adjustment and alignment. Access to the lamp and gear is quick and easy, via the hinged front glass with its quick-release stainless-steel clips. All Tempo luminaires are RoHS-compliant.

Benefits

- Wide choice of lamp types and symmetrical or asymmetrical reflectors for highly efficient beam distribution
- Ideal for a variety of outdoor applications from architectural, facade and billboard lighting to area and (leisure) sports lighting
- Optimal visual integration with compact housing and metallic grey finish

Features

- Wide choice of lamp types
- Symmetrical and asymmetrical reflectors
- Compact housing with metallic grey finish
- Aiming device
- Hinged front glass with quick-release clips

Application

- Area lighting

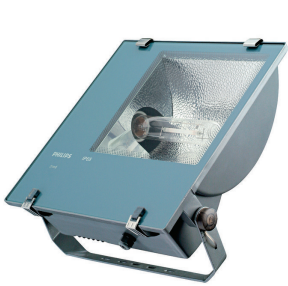
Tempo 3 RVP351

Specifications

Type	RVP351
Light source	HID: <ul style="list-style-type: none">- 1 x MASTER HPI-T Plus / E40 / 250, 400 W- 1 x SON-T / E40 / 250, 400 W
Lamp included	Yes (K)
Gear and compensation (Integrated)	Electromagnetic (low loss), 230 or 240 V / 50 Hz: <ul style="list-style-type: none">- Inductive (IN)- Inductive, parallel compensated (IC)
Optic	Asymmetrical (A) Symmetrical (S)
Materials and finishing	Housing: die-cast aluminum, corrosion-resistant powder coating Glass: thermally hardened, 4 mm thick Gasket: premium bonded silicone Mounting bracket: steel Aiming device cap: nylon Fixation clips: stainless steel Reflector: anodized, high-purity aluminum

Color	Grey, RAL 9007, powder-coated Color-matched bracket, grommet and hinges
Installation	Ceiling, wall or floor mounting Cable entry via M20 cable gland Ambient temperature outdoor: 35°C Drag factor (SCx): 0.203 m Max. adjustment from the horizontal: 175°
Maintenance	Hinged front glass with quick-release clips for in-position lamp replacement No internal cleaning required
Main applications	Area, facade, billboard, architectural lighting

Versions



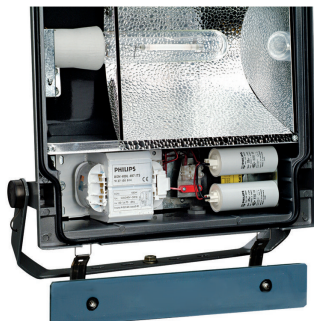
Tempo 3 RVP351 area flood-lighting luminaire

Product details



Tempo 3 RVP351

Product details



Approval and Application

Mech. impact protection code	IK07
------------------------------	------

Controls and Dimming

Dimmable	No
----------	----

General Information

CE mark	CE mark
Light source colour	645 neutral white
Optical cover/lens type	FG
ENEC mark	-
Gear	CONV
Glow-wire test	Temperature 850 °C, duration 5 s
Lamp family code	HPI-TP
Number of light sources	1

Initial Performance (IEC Compliant)

Init. Corr. Colour Temperature	4500 K
Init. Colour Rendering Index	65

Light Technical

Upward light output ratio	0
---------------------------	---

Mechanical and Housing

Colour	Grey
--------	------

General Information

Order Code	Full Product Name	Lamp power	Optic type
14970700	RVP351 HPI-TP250W K IC A	250 W	Asymmetrical
14971400	RVP351 HPI-TP250W K IC S	250 W	Symmetrical
14973800	RVP351 HPI-TP400W K IC S	400 W	Symmetrical

