



Koffer² – economical system

Koffer² SGP070

Koffer² is an archetypal modern road lighting luminaire which meets the needs of today's road users and operators. Total cost over lifetime was a key consideration in the development of Koffer². The future-proof luminaire delivers outstanding optical performance, enabling optimum spacing and energy efficiency, and is easy to install and maintain. With its rectangular shape, Koffer² offers an alternative to rounded luminaires. It is available in three sizes – for mounting heights from 3.5 to 12 meters – and with dedicated masts and brackets, making it equally suitable for integration into modern urban environments or more traditional lighting designs. The Koffer² family accommodates CosmoPolis white-light technology and LED-enabled versions. Each Koffer² luminaire is fully recyclable; only the light source and driver have to be recycled separately.

Benefits

- Meets the needs of today's road users and operators, with an archetypal modern road lighting luminaire
- Highly versatile design with rectangular luminaire in two sizes for integration into futuristic concepts or more traditional lighting designs
- Focus on optimum total cost over lifetime - sound construction and low maintenance costs plus high optical performance and energy-efficiency

Features

- Warm-white Luxeon Rebel LEDs
- LifeLEDTM module – re-LEDing upgrade possible
- Simplified components platform

Application

- Residential areas
- Pavements and (cycle) paths

Specifications

Koffer² SGP070

Type	SGP070
Light source	HID: - 1 x MASTER CosmoWhite CPO-TW / PGZ12 / 45, 60, 90, 140 W - 1 x MASTER CityWhite CDO-TT / E27 / 70 W - 1 x CDO-ET / E27 / 70 W - 1 x MASTER SON-T PIA Plus / E27 / 50, 70 W - 1 x MASTER SON-T PIA Plus / E40 / 100 W - 1 x SON / E27 / 50, 70 W - 1 x SON / E40 / 100 W Compact fluorescent: - 2 x MASTER PL-L 4 Pin / 2G11 / 11 W - 1 x or 2 x MASTER PL-L 4 PIN / 2G11 / 18 W Induction lamp system: - 1 x MASTER QL system / 55 W
Lamp included	Yes (K or light color 827, 830 or 840) No
Mains supply	230 or 240 V
Gear and compensation	Electro magnetic (low loss), 230 or 240 V / 50 Hz: - Inductive (IN) Electronic, 220 - 240 V / 50 - 60 Hz: - Electronic (EB)

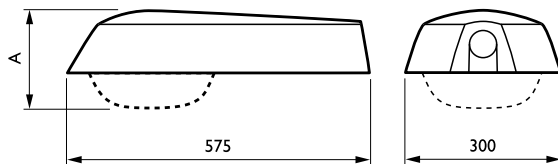
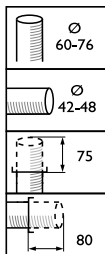
Specifications

Options	Lighting controls: Chronosense (CH) Light regulation: - Dimming switch (SW) - Dimming switch with reverse function (SWR) - Dimming via SDU01S (D4) - Dimming via SDU11S (D5) - Dimming via external communication 1-10Vdc (D7) Photocell: NEMA socket (P1), Minicell (P3) Filter coil (F) included Fuse (FU) included Knife-connector (KC) included Pre-equipped cables without plug connector: - cable lengths of: 6 m (C6K), 10 m (C12K)
Materials and finishing	Housing: aluminum Optical covers: acrylic or polycarbonate bowls, UV-stabilized or hardened glass, min IK08

Optic	Open CT-POT (OR) "Opti-O" easy lamp access for CosmoPolis, CDO and SON lamps Cycle path optic (CYC). Only for GB and PC. At low mounting heights in narrow paths optimize for CosmoPolis low S-classes Reflector for railways (RW), for narrow platforms with maximum glare control
Optical cover	Glass bowl (GB) better spacing and better night preservation solution Glass bowl with DynaClean coating (GBD) on addition to GB the self-cleaning technology improve the maintenance factor Glass flat (FG), reduce glare and improve night nuisance Glass flat with DynaClean coating (FGD) Acrylic bowl, frosted (ACF) no yellowing Polycarbonate bowl, frosted (PCF) vandal-resistant
Ignitor	Semi-parallel, digital (SND) Series digital ignitor (SUD)

Color	Grey (RAL 7035) or white (RAL 9006) Other RAL colors available on request (e.g. 7024)
Installation	Side-entry mounting: lateral entry Ø 42 / 48 mm Post-top mounting: axial entry Ø 60 / 76 mm Spigot is integrated, continuously variable Recommended mounting height: 3.5 - 7 m Standard tilt angle post top: 10° Adjustable tilt angle: n/a Adjustable light distribution: 5 positions Max windage area: 0.08 m Max SCx values by side: 0.035 m
Maintenance	Toolless from below. Opening by one main clip
Accessories	Front and back louvers, ZGP070 L-FRONT resp L-BACK Dedicated mast and pole brackets available for different mounting possibilities
Main applications	Pedestrian and parking areas, bicycle paths

Dimensional drawing



Product	A
SGP070 P2xSON-T100W II RWWB GB AL 9007	163 mm
SGP070 CPOTW60W K II RWWB FG AL9007 NG9Y	133 mm
SGP070 SON-T50/70W II RW FG	133 mm
SGP070 CPO-TW45W K EB GB	163 mm
SGP070 P2SONT50/70W II RWWBFG 9007 2NG9Y	133 mm
SGP070 CPO-TW60W K EB FG	133 mm
SGP070 SON-T70W K 240V GB	163 mm
SGP070 SON-T50/70W II FG	133 mm
SGP070 CPO-TW45W K EB FG	133 mm
SGP070 SON-T70W II RW FG	133 mm
SGP070 SON-T50/70W II WB ACF	192 mm
SGP070 CPO-TW60W K EB II GB AL SI	163 mm
SGP070 CPO-TW45W K EB PCF	192 mm
SGP070 SON-T70W K 240V FG P3	133 mm
SGP070 CPO-TW60W K EB GB	163 mm
SGP070 SON-T50/70W II GB	163 mm
SGP070 CPO-TW60W K EB II FG	133 mm
SGP070 QL55W/840 ACF	192 mm
SGP070 SON-T70W EBD II GB AL SI RF	163 mm
SGP070 SON-T50W EBD II GB AL SI RF	163 mm
SGP070 CDO-TT70W K II FG	133 mm
SGP070 SON-T70/50W II WB ACF SW	192 mm
SGP070 CPO-TW60W K EB II RW FG AL 9007	133 mm
SGP070 SON-T70W EBD II GB D9	163 mm
SGP070 CPO-TW45W K EB II RW FG AL 9007	133 mm
SGP070 SON-T70W EBR II ACF D11	192 mm
SGP070 2xCPO-TW60W K II RWWB FG AL 9007	133 mm
SGP070 SON-T70W K 240V ACF P1	192 mm
SGP070 SON-T70W K II FG	133 mm
SGP070 SON-T70/50W II ACF SW	192 mm
SGP070 CDO-TT70W EBR II GB AL SI D11	163 mm
SGP070 SON-T50/35W II WB ACF SW	192 mm
SGP070 CPO-TW60W K EB II FG LS-6	133 mm
SGP070 CPO-TW140W K EB II RW FG AL 9007	133 mm
SGP070 CPOTW45W K II RWWB FG AL9007 NG9Y	133 mm
SGP070 SON-T70W K 240V GB P1	163 mm
SGP070 CPO-TW90W K EB II RW FG AL 9007	133 mm
SGP070 SON-T70W EB GB P1	163 mm
SGP070 SON-T100W II RWWB GB AL 9007	163 mm
SGP070 SON-T50W EB GB P1	163 mm
SGP070 SON-T50/70W II ACF	192 mm
SGP070 CPO-TW45W K EBD II GB AL SI RF	163 mm
SGP070 SON-T50/70W II PCF	192 mm
SGP070 SON-T70W K II GB	163 mm
SGP070 SON-T70W EBD II ACF D9	192 mm
SGP070 SON-T70W II WB ACF	192 mm
SGP070 2xSON-T50/70W II RWFGAL9007 2NG9Y	133 mm
SGP070 2xSON-T50/70W II RWWB FG AL 9007	133 mm
SGP070 CPO-TW140W K EB II GB AL SI	163 mm
SGP070 SON-T70W II FG	133 mm

Dimensional drawing

Product	A
SGP070 SON-T70W K 240V FG	133 mm
SGP070 2xSON-T50/70W II RW FG AL9007 DB	133 mm
SGP070 SON-T70W K 240V PCF P1	192 mm
SGP070 2xCPO-TW90W K II RWWB FG AL 9007	133 mm
SGP070 SON-T70W GB	163 mm
SGP070 SON-T70W K 240V ACF	192 mm
SGP070 2xCPO-TW45W K II RWWB FG AL 9007	133 mm
SGP070 2xPL-L18W II ACF	192 mm
SGP070 SON-T70W FG	133 mm
SGP070 SON-T50/70W II RWWB FG AL 9007	133 mm
SGP070 CDO-TT70W EBD II GB AL SI D9	163 mm
SGP070 SON-T50W FG	133 mm
SGP070 2xCPO-TW140W K II RWWB FG AL 9007	133 mm
SGP070 CPO-TW60W K EB II FG SI	133 mm
SGP070 SON-T70W II ACF	192 mm
SGP070 SON-T70W EBR II GB D11	163 mm
SGP070 2xSON-T100W II RW FG AL9007 2NG9Y	133 mm
SGP070 SON-T50/70W FG	133 mm
SGP070 SON-T100W K II GB	163 mm
SGP070 CPO-TW140W K EBD II GB AL SI RF	163 mm
SGP070 CPO-TW60W K EB PCF	192 mm
SGP070 SON-T50W GB	163 mm
SGP070 2xSON-T100W II RW FG AL9007 DB	133 mm
SGP070 SON-T70W II RWWB FG AL 9007	133 mm
SGP070 SON-T70W II FG AL 7024	133 mm
SGP070 2xSON-T70W II RWWB FG AL 9007	133 mm
SGP070 CPO-TW60W K EB II GB AL SI C10K	163 mm
SGP070 SON-T100W II RW FG AL 9007	133 mm
SGP070 SON-T100/70W PCF SW	192 mm
SGP070 SON-T70W II FG AL 9011	133 mm
SGP070 CPO-TW90W K EB II GB	163 mm
SGP070 SON-T100/70W II GB CH	163 mm
SGP070 SON-T100W II RW FG	133 mm
SGP070 SON-T50/70W II RW FG AL 9007	133 mm
SGP070 P2SON-T100W II RWWB GB 9007 2NG9Y	163 mm
SGP070 CDO-TT70W K II GB	163 mm
SGP070 SON-T50W K II GB	163 mm
SGP070 P2SON-T100W II RWWB GB 9007 NG9Y	163 mm
SGP070 CPO-TW90W K EBD II GB AL SI RF	163 mm
SGP070 CPOTW90W K II RWWB FG AL9007 NG9Y	133 mm
SGP070 CPO-TW60W K EB II GB	163 mm
SGP070 CPO-TW45W K EB II FG	133 mm
SGP070 CPO-TW140W K EB II FG	133 mm
SGP070 SON-T100W GB	163 mm
SGP070 SON-T70W K 240V FG P1	133 mm
SGP070 SON-T50/70W II RW FG AL 9007 NG9Y	133 mm
SGP070 2xSON-T50/70W II RWFG AL9007 NG9Y	133 mm
SGP070 SON-T70W K 240V GB P3	163 mm
SGP070 CPO-TW60W K EBD II GB AL SI RF	163 mm
SGP070 SON-T70W K 240V ACF P3	192 mm

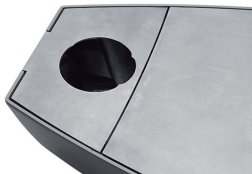
Product	A
SGP070 SON-T100W II RW FG AL 9007 NG9Y	133 mm
SGP070 2xSON-T100W II RW FG AL 9007 NG9Y	133 mm
SGP070 P2SONT50/70W II RWWB FG 9007 NG9Y	133 mm
SGP070 SON-T70W K II FG KC	133 mm
SGP070 SON-T70/50W II FG	133 mm
SGP070 CPO-TW140W K EB II GB	163 mm
SGP070 SON-T50W K II FG	133 mm

Product details

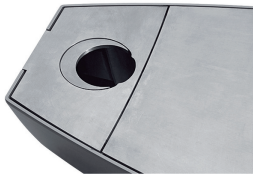
IP66 protection keeps luminaire clean on the inside and therefore minimizes maintenance



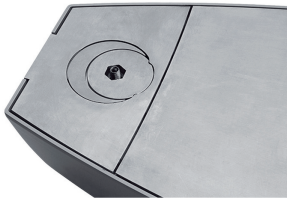
For post-top installations, 76 mm: The opening is fully open and the round, moon-shaped baffles are pivoted inside the luminaire.



Post-top installation, 60mm: The round baffle is pivoted inside the luminaire. The moon-shaped baffle closes the rest of the opening and the surface of the luminaire is totally flush.



Side-entry installation: Both baffles close the opening and the surface is totally flush.



Toolless opening of the luminaire



Quickly replace glass bowls



Koffer² SGP070

Product details



Quickly replace the gear tray



Replace lamps without tools



Koffer² SGP070, small version



Koffer² SGP100, large version

