



EFix – for a greener office

EFix TCS260

The EFix TL5 luminaire range is a dedicated, affordable choice of innovative lighting that enables massive energy savings to be made when old electromagnetic installations are replaced by the latest Philips technology. The range's optical performance complies with the latest EN-12464 norms, ensuring improved lighting quality in every application. Used in combination with high-frequency gear, Philips MASTER TL5 lamps enable substantial energy savings to be made. These savings can be further increased by using a Luxsense daylight controller integrated into the luminaire. The practical design of EFix combines both surface-mounted (TCS260) and suspended (TPS262) luminaires in one design. Thanks to the luminaire's easily removable top cover, the beam can be adjusted to provide direct or direct/indirect lighting. EFix is supplied with lamps and is ready to install, minimizing installation time. EFix recessed TBS260 completes Philips' range of luminaires for general lighting applications in offices and shops.

Benefits

- In its segment the easiest product to install
- Dedicated TL5 luminaire design, which is appealing because of its simplicity
- Office compliant luminaire using the mini optics

Features

- Simple design
- MASTER TL5 lamps; suitable for use with high-frequency gear
- Mini optics; performance compliant with EN-12464 norms
- Integrated Luxsense daylight controller available
- Easily removable top cover: allows beam adjustment to provide direct or direct/indirect lighting

EFix TCS260

Application

- Offices
- Shops

Specifications

Type	TCS260	Connection	Push-in connector, from outside
Light source	Fluorescent: - 1 x or 2 x MASTER TL5 / G5 / 28, 35, 49, 54, 80 W	Color	White, RAL 9016 (WH) Silver, RAL 9006 (SI)
Lamp included	Yes (lamp color 830 or 840)	Option	Lighting controls: - Luxsense daylight controller (LX) - Actilume multi controller (ACL)
Gear	Electronic, 220 - 240 V / 50 - 60 Hz: - High Frequency Performer Intelligent (HFPI) - High Frequency Performer (HFP) - High Frequency Regulator (HFR)	Material	Housing: pre-lacquered steel Optic: pre-lacquered steel or aluminum End cap: polycarbonate
Optic	High-gloss optic, double parabolic, closed (C6) Semi-high-gloss optic, double parabolic (D6) Matt optic, double parabolic louvers, closed (M6) Matt mirror, ribbed cross louvers (M2) Asymmetrical mirror (A) Prismatic/opal curved polycarbonate cover in matt high-quality aluminum optic (OD)	Installation	Individual or in line; clicking the luminaire into pre-screwed ceiling brackets
		Accessory	Suspension set delivered with electrical cable, ZCS260 SME WH or SI
		Remarks	Delivered with lamps, push-in connector and ceiling brackets

Versions



EFix TCS260

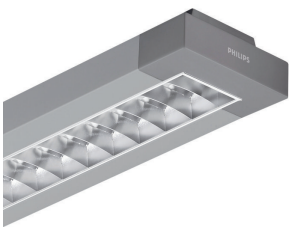
Versions



EFix TCS260 surface-mounted luminaire with OLC high-gloss aluminium optic with 3D lamellae (C6)

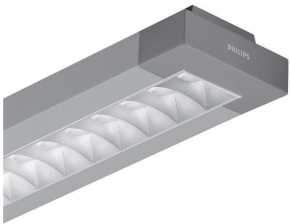
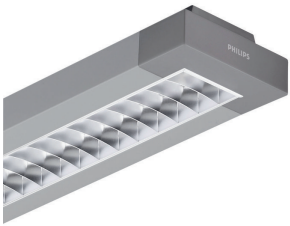
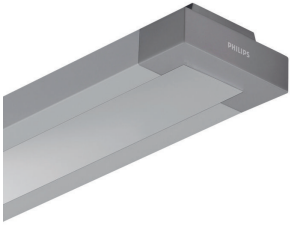


EFix TCS260 surface-mounted luminaire with OLC high-gloss aluminium optic with 3D lamellae (C6)

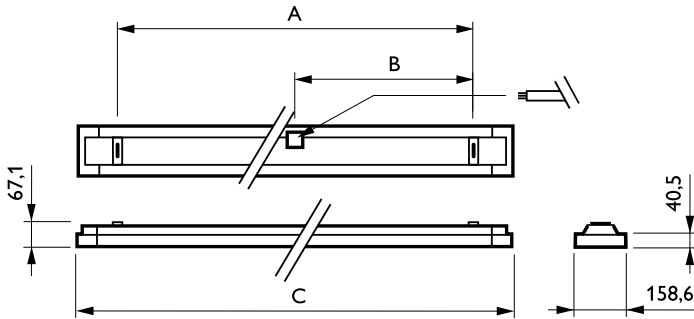


EFix TCS260

Versions



Dimensional drawing



Product	A	B	C
TCS260 2x54W/840 HFS M2 SI	1000 mm	500 mm	1241 mm
TCS260 2x54W/840 HFS M6 SI	1000 mm	500 mm	1241 mm
TCS260 2x54W/840 HFS D6 SI	1000 mm	500 mm	1241 mm
TCS260 2x54W/840 HFS C6 SI	1000 mm	500 mm	1241 mm
TCS260 2x49W/840 HFS M2 SI	1300 mm	650 mm	1541 mm
TCS260 2x49W/840 HFS M6 SI	1300 mm	650 mm	1541 mm
TCS260 2x49W/840 HFS D6 SI	1300 mm	650 mm	1541 mm
TCS260 2x49W/840 HFS C6 SI	1300 mm	650 mm	1541 mm
TCS260 2x35W/840 HFS M2 SI	1300 mm	650 mm	1541 mm
TCS260 2x35W/840 HFS M6 SI	1300 mm	650 mm	1541 mm
TCS260 2x35W/840 HFS D6 SI	1300 mm	650 mm	1541 mm
TCS260 2x35W/840 HFS C6 SI	1300 mm	650 mm	1541 mm
TCS260 2x28W/840 HFS M2 SI	1000 mm	500 mm	1241 mm
TCS260 2x28W/840 HFS M6 SI	1000 mm	500 mm	1241 mm
TCS260 2x28W/840 HFS D6 SI	1000 mm	500 mm	1241 mm
TCS260 2x28W/840 HFS C6 SI	1000 mm	500 mm	1241 mm
TCS260 1x80W/840 HFS A SI	1300 mm	650 mm	1541 mm
TCS260 1x80W/840 HFS M6 SI	1300 mm	650 mm	1541 mm
TCS260 1x80W/840 HFS C6 SI	1300 mm	650 mm	1541 mm
TCS260 1x54W/840 HFS A SI	1000 mm	500 mm	1241 mm
TCS260 1x54W/840 HFS M6 SI	1000 mm	500 mm	1241 mm
TCS260 1x54W/840 HFS D6 SI	1000 mm	500 mm	1241 mm
TCS260 1x54W/840 HFS C6 SI	1000 mm	500 mm	1241 mm
TCS260 1x49W/840 HFS A SI	1300 mm	650 mm	1541 mm
TCS260 1x49W/840 HFS M6 SI	1300 mm	650 mm	1541 mm
TCS260 1x49W/840 HFS D6 SI	1300 mm	650 mm	1541 mm
TCS260 1x49W/840 HFS C6 SI	1300 mm	650 mm	1541 mm
TCS260 1x35W/840 HFS M6 SI	1300 mm	650 mm	1541 mm
TCS260 1x35W/840 HFS D6 SI	1300 mm	650 mm	1541 mm
TCS260 1x35W/840 HFS C6 SI	1300 mm	650 mm	1541 mm
TCS260 1x28W/840 HFS A SI	1000 mm	500 mm	1241 mm
TCS260 1x28W/840 HFS M6 SI	1000 mm	500 mm	1241 mm
TCS260 1x28W/840 HFS D6 SI	1000 mm	500 mm	1241 mm
TCS260 1x28W/840 HFS C6 SI	1000 mm	500 mm	1241 mm
TCS260 2x54W/840 HFS M2 WH	1000 mm	500 mm	1241 mm
TCS260 2x54W/840 HFS M6 WH	1000 mm	500 mm	1241 mm
TCS260 2x54W/840 HFS D6 WH	1000 mm	500 mm	1241 mm
TCS260 2x54W/840 HFS C6 WH	1000 mm	500 mm	1241 mm
TCS260 2x49W/840 HFS M2 WH	1300 mm	650 mm	1541 mm
TCS260 2x49W/840 HFS M6 WH	1300 mm	650 mm	1541 mm
TCS260 2x49W/840 HFS D6 WH	1300 mm	650 mm	1541 mm
TCS260 2x49W/840 HFS C6 WH	1300 mm	650 mm	1541 mm
TCS260 2x35W/840 HFS M2 WH	1300 mm	650 mm	1541 mm
TCS260 2x35W/840 HFS M6 WH	1300 mm	650 mm	1541 mm
TCS260 2x35W/840 HFS D6 WH	1300 mm	650 mm	1541 mm
TCS260 2x35W/840 HFS C6 WH	1300 mm	650 mm	1541 mm
TCS260 2x28W/840 HFS M2 WH	1000 mm	500 mm	1241 mm
TCS260 2x28W/840 HFS M6 WH	1000 mm	500 mm	1241 mm
TCS260 2x28W/840 HFS D6 WH	1000 mm	500 mm	1241 mm
TCS260 2x28W/840 HFS C6 WH	1000 mm	500 mm	1241 mm

Dimensional drawing

Product	A	B	C
TCS260 1x80W/840 HFS A WH	1300 mm	650 mm	1541 mm
TCS260 1x80W/840 HFS C6 WH	1300 mm	650 mm	1541 mm
TCS260 1x54W/840 HFS A WH	1000 mm	500 mm	1241 mm
TCS260 1x54W/840 HFS M2 WH	1000 mm	500 mm	1241 mm
TCS260 1x54W/840 HFS M6 WH	1000 mm	500 mm	1241 mm
TCS260 1x54W/840 HFS D6 WH	1000 mm	500 mm	1241 mm
TCS260 1x54W/840 HFS C6 WH	1000 mm	500 mm	1241 mm
TCS260 1x49W/840 HFS A WH	1300 mm	650 mm	1541 mm
TCS260 1x49W/840 HFS M2 WH	1300 mm	650 mm	1541 mm
TCS260 1x49W/840 HFS M6 WH	1300 mm	650 mm	1541 mm
TCS260 1x49W/840 HFS D6 WH	1300 mm	650 mm	1541 mm
TCS260 1x49W/840 HFS C6 WH	1300 mm	650 mm	1541 mm
TCS260 1x35W/840 HFS A WH	1300 mm	650 mm	1541 mm
TCS260 1x35W/840 HFS M2 WH	1300 mm	650 mm	1541 mm
TCS260 1x35W/840 HFS D6 WH	1300 mm	650 mm	1541 mm
TCS260 1x35W/840 HFS C6 WH	1300 mm	650 mm	1541 mm
TCS260 1x28W/840 HFS A WH	1000 mm	500 mm	1241 mm
TCS260 1x28W/840 HFS M2 WH	1000 mm	500 mm	1241 mm
TCS260 1x28W/840 HFS D6 WH	1000 mm	500 mm	1241 mm
TCS260 1x28W/840 HFS C6 WH	1000 mm	500 mm	1241 mm

Product details

EFix TCS260 surface-mounted luminaire



EFix TPS262/TCS260 1x TL5



Easy installation with ceiling bracket and external push-in connection

EFix TCS260

Product details



Cover plate - direct/indirect light distribution can be achieved simply by removing the top reflector



The luminaire is supplied with a top reflector that provides a direct light distribution



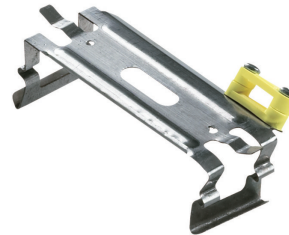
Direct/indirect light distribution can be achieved simply by removing the top reflector



Electrical connector out



Electrical connector in



Bracket



Mounting



EFix TPS262/TCS260 2x TL5

Approval and Application

Ingress protection code IP20

Operating and Electrical

Input Voltage 220 to 240 V

General Information

CE mark CE mark
 Protection class IEC Safety class I (I)
 Optical cover/lens type No
 Emergency lighting No
 Flammability mark F
 Gear HFS
 Kombipack Lamp(s) included
 Lamp family code TL5
 Embedded control No
 Product Family Code TCS260
 Internal wiring Standard

General Information

Order Code	Full Product Name	Lamp power	Number of light sources	Optic type
61194600	TCS260 1x28W/840 HFS C6 WH	28 W	1	C6
61199100	TCS260 1x35W/840 HFS C6 WH	35 W	1	C6
61204200	TCS260 1x49W/840 HFS C6 WH	49 W	1	C6
61209700	TCS260 1x54W/840 HFS C6 WH	54 W	1	C6
61214100	TCS260 1x80W/840 HFS C6 WH	80 W	1	C6
61195300	TCS260 1x28W/840 HFS D6 WH	28 W	1	D6
61200400	TCS260 1x35W/840 HFS D6 WH	35 W	1	D6
61205900	TCS260 1x49W/840 HFS D6 WH	49 W	1	D6
61210300	TCS260 1x54W/840 HFS D6 WH	54 W	1	D6
61197700	TCS260 1x28W/840 HFS M2 WH	28 W	1	M2
61202800	TCS260 1x35W/840 HFS M2 WH	35 W	1	M2
61207300	TCS260 1x49W/840 HFS M2 WH	49 W	1	M2
61212700	TCS260 1x54W/840 HFS M2 WH	54 W	1	M2
61198400	TCS260 1x28W/840 HFS A WH	28 W	1	A
61203500	TCS260 1x35W/840 HFS A WH	35 W	1	A
61208000	TCS260 1x49W/840 HFS A WH	49 W	1	A
61213400	TCS260 1x54W/840 HFS A WH	54 W	1	A
61218900	TCS260 1x80W/840 HFS A WH	80 W	1	A
61206600	TCS260 1x49W/840 HFS M6 WH	49 W	1	M6
61211000	TCS260 1x54W/840 HFS M6 WH	54 W	1	M6
61219600	TCS260 2x28W/840 HFS C6 WH	28 W	2	C6
61223300	TCS260 2x35W/840 HFS C6 WH	35 W	2	C6
61227100	TCS260 2x49W/840 HFS C6 WH	49 W	2	C6
61231800	TCS260 2x54W/840 HFS C6 WH	54 W	2	C6
61220200	TCS260 2x28W/840 HFS D6 WH	28 W	2	D6
61224000	TCS260 2x35W/840 HFS D6 WH	35 W	2	D6
61228800	TCS260 2x49W/840 HFS D6 WH	49 W	2	D6
61232500	TCS260 2x54W/840 HFS D6 WH	54 W	2	D6
61221900	TCS260 2x28W/840 HFS M6 WH	28 W	2	M6
61225700	TCS260 2x35W/840 HFS M6 WH	35 W	2	M6
61229500	TCS260 2x49W/840 HFS M6 WH	49 W	2	M6
61233200	TCS260 2x54W/840 HFS M6 WH	54 W	2	M6
61222600	TCS260 2x28W/840 HFS M2 WH	28 W	2	M2
61226400	TCS260 2x35W/840 HFS M2 WH	35 W	2	M2
61230100	TCS260 2x49W/840 HFS M2 WH	49 W	2	M2
61234900	TCS260 2x54W/840 HFS M2 WH	54 W	2	M2
61235600	TCS260 1x28W/840 HFS C6 SI	28 W	1	C6
61240000	TCS260 1x35W/840 HFS C6 SI	35 W	1	C6
61245500	TCS260 1x49W/840 HFS C6 SI	49 W	1	C6
61250900	TCS260 1x54W/840 HFS C6 SI	54 W	1	C6
61255400	TCS260 1x80W/840 HFS C6 SI	80 W	1	C6
61236300	TCS260 1x28W/840 HFS D6 SI	28 W	1	D6
61241700	TCS260 1x35W/840 HFS D6 SI	35 W	1	D6
61246200	TCS260 1x49W/840 HFS D6 SI	49 W	1	D6
61251600	TCS260 1x54W/840 HFS D6 SI	54 W	1	D6
61237000	TCS260 1x28W/840 HFS M6 SI	28 W	1	M6
61242400	TCS260 1x35W/840 HFS M6 SI	35 W	1	M6
61247900	TCS260 1x49W/840 HFS M6 SI	49 W	1	M6
61252300	TCS260 1x54W/840 HFS M6 SI	54 W	1	M6
61257800	TCS260 1x80W/840 HFS M6 SI	80 W	1	M6
61239400	TCS260 1x28W/840 HFS A SI	28 W	1	A

Order Code	Full Product Name	Lamp power	Number of light sources	Optic type
61249300	TCS260 1x49W/840 HFS A SI	49 W	1	A
61254700	TCS260 1x54W/840 HFS A SI	54 W	1	A
61259200	TCS260 1x80W/840 HFS A SI	80 W	1	A
61260800	TCS260 2x28W/840 HFS C6 SI	28 W	2	C6
61264600	TCS260 2x35W/840 HFS C6 SI	35 W	2	C6
61268400	TCS260 2x49W/840 HFS C6 SI	49 W	2	C6
61272100	TCS260 2x54W/840 HFS C6 SI	54 W	2	C6
61261500	TCS260 2x28W/840 HFS D6 SI	28 W	2	D6
61265300	TCS260 2x35W/840 HFS D6 SI	35 W	2	D6
61269100	TCS260 2x49W/840 HFS D6 SI	49 W	2	D6
61273800	TCS260 2x54W/840 HFS D6 SI	54 W	2	D6
61262200	TCS260 2x28W/840 HFS M6 SI	28 W	2	M6
61266000	TCS260 2x35W/840 HFS M6 SI	35 W	2	M6
61270700	TCS260 2x49W/840 HFS M6 SI	49 W	2	M6
61274500	TCS260 2x54W/840 HFS M6 SI	54 W	2	M6
61263900	TCS260 2x28W/840 HFS M2 SI	28 W	2	M2
61267700	TCS260 2x35W/840 HFS M2 SI	35 W	2	M2
61271400	TCS260 2x49W/840 HFS M2 SI	49 W	2	M2
61275200	TCS260 2x54W/840 HFS M2 SI	54 W	2	M2

Mechanical and Housing

Order Code	Full Product Name	Colour	Order Code	Full Product Name	Colour
61194600	TCS260 1x28W/840 HFS C6 WH	White	61225700	TCS260 2x35W/840 HFS M6 WH	White
61199100	TCS260 1x35W/840 HFS C6 WH	White	61229500	TCS260 2x49W/840 HFS M6 WH	White
61204200	TCS260 1x49W/840 HFS C6 WH	White	61233200	TCS260 2x54W/840 HFS M6 WH	White
61209700	TCS260 1x54W/840 HFS C6 WH	White	61222600	TCS260 2x28W/840 HFS M2 WH	White
61214100	TCS260 1x80W/840 HFS C6 WH	White	61226400	TCS260 2x35W/840 HFS M2 WH	White
61195300	TCS260 1x28W/840 HFS D6 WH	White	61230100	TCS260 2x49W/840 HFS M2 WH	White
61200400	TCS260 1x35W/840 HFS D6 WH	White	61234900	TCS260 2x54W/840 HFS M2 WH	White
61205900	TCS260 1x49W/840 HFS D6 WH	White	61235600	TCS260 1x28W/840 HFS C6 SI	Silver
61210300	TCS260 1x54W/840 HFS D6 WH	White	61240000	TCS260 1x35W/840 HFS C6 SI	Silver
61197700	TCS260 1x28W/840 HFS M2 WH	White	61245500	TCS260 1x49W/840 HFS C6 SI	Silver
61202800	TCS260 1x35W/840 HFS M2 WH	White	61250900	TCS260 1x54W/840 HFS C6 SI	Silver
61207300	TCS260 1x49W/840 HFS M2 WH	White	61255400	TCS260 1x80W/840 HFS C6 SI	Silver
61212700	TCS260 1x54W/840 HFS M2 WH	White	61236300	TCS260 1x28W/840 HFS D6 SI	Silver
61198400	TCS260 1x28W/840 HFS A WH	White	61241700	TCS260 1x35W/840 HFS D6 SI	Silver
61203500	TCS260 1x35W/840 HFS A WH	White	61246200	TCS260 1x49W/840 HFS D6 SI	Silver
61208000	TCS260 1x49W/840 HFS A WH	White	61251600	TCS260 1x54W/840 HFS D6 SI	Silver
61213400	TCS260 1x54W/840 HFS A WH	White	61237000	TCS260 1x28W/840 HFS M6 SI	Silver
61218900	TCS260 1x80W/840 HFS A WH	White	61242400	TCS260 1x35W/840 HFS M6 SI	Silver
61206600	TCS260 1x49W/840 HFS M6 WH	White	61247900	TCS260 1x49W/840 HFS M6 SI	Silver
61211000	TCS260 1x54W/840 HFS M6 WH	White	61252300	TCS260 1x54W/840 HFS M6 SI	Silver
61219600	TCS260 2x28W/840 HFS C6 WH	White	61257800	TCS260 1x80W/840 HFS M6 SI	Silver
61223300	TCS260 2x35W/840 HFS C6 WH	White	61239400	TCS260 1x28W/840 HFS A SI	Silver
61227100	TCS260 2x49W/840 HFS C6 WH	White	61249300	TCS260 1x49W/840 HFS A SI	Silver
61231800	TCS260 2x54W/840 HFS C6 WH	White	61254700	TCS260 1x54W/840 HFS A SI	Silver
61220200	TCS260 2x28W/840 HFS D6 WH	White	61259200	TCS260 1x80W/840 HFS A SI	Silver
61224000	TCS260 2x35W/840 HFS D6 WH	White	61260800	TCS260 2x28W/840 HFS C6 SI	Silver
61228800	TCS260 2x49W/840 HFS D6 WH	White	61264600	TCS260 2x35W/840 HFS C6 SI	Silver
61232500	TCS260 2x54W/840 HFS D6 WH	White	61268400	TCS260 2x49W/840 HFS C6 SI	Silver
61221900	TCS260 2x28W/840 HFS M6 WH	White	61272100	TCS260 2x54W/840 HFS C6 SI	Silver

EFix TCS260

Order Code	Full Product Name	Colour
61261500	TCS260 2x28W/840 HFS D6 SI	Silver
61265300	TCS260 2x35W/840 HFS D6 SI	Silver
61269100	TCS260 2x49W/840 HFS D6 SI	Silver
61273800	TCS260 2x54W/840 HFS D6 SI	Silver
61262200	TCS260 2x28W/840 HFS M6 SI	Silver
61266000	TCS260 2x35W/840 HFS M6 SI	Silver

Order Code	Full Product Name	Colour
61270700	TCS260 2x49W/840 HFS M6 SI	Silver
61274500	TCS260 2x54W/840 HFS M6 SI	Silver
61263900	TCS260 2x28W/840 HFS M2 SI	Silver
61267700	TCS260 2x35W/840 HFS M2 SI	Silver
61271400	TCS260 2x49W/840 HFS M2 SI	Silver
61275200	TCS260 2x54W/840 HFS M2 SI	Silver

