



Celino – light beam

Celino TCS680 C

Celino is a complete luminaire range that reflects the market trend towards miniaturization and architectural integration, while at the same time delivering a significant advance in optical performance. Celino features Philips' aluminum micro optic with 3D lamellae, which ensures optimum visual comfort and efficiency in compliance with the latest office-lighting norm (EN 12464-1). Made of natural anodized aluminum, the housing of Celino is a mere 71 mm wide and has die-cast-aluminum end caps. The design allows multiple luminaires to be connected in a line arrangement. Celino is available as a full range – suspended, surface-mounted, free-standing and wall-mounted – for maximum freedom in application.

Benefits

- Complete luminaire range that reflects the trend to miniaturization and architectural integration
- Excellent optical performance using Philips' aluminum micro optic with 3D lamellae for optimum visual comfort and efficiency
- Design allows multiple luminaires to be connected in line arrangements

Features

- Inspiring: aesthetical and novel design with visually better ceiling integration
- Comfort: spacious and pleasant environment with comfortable lighting appearance
- Efficient: high efficacy achieved with optics innovation

Application

- Open plan office
- Meeting room
- Reception area
- Cell office
- Lounge

Specifications

Type	TCS680	Light source	Fluorescent: - 1 x or 2 x MASTER TL5 / G5 / 28, 35, 49, 54, 80 W
------	--------	--------------	---

Celino TCS680 C

Lamp included	No
Ballast	Electronic, High Frequency 220-240 V / 50-60 Hz: - Performer (HFP)
Optic	Micro OLC performer semi-high-gloss optic (D8)
Optical cover	OLC micro lens optic cover of acrylate material (AC-MLO)
Options	Euro fuse (FU) included

Connection	Push in connector for main power
Material	Housing: natural anodized aluminum (ALU) End caps: die-cast aluminum Optic: aluminum Optical cover: PMMA
Installation	Individual; screw mounting

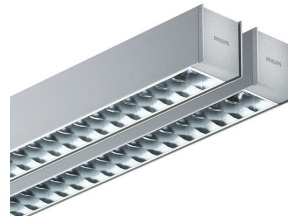
Versions



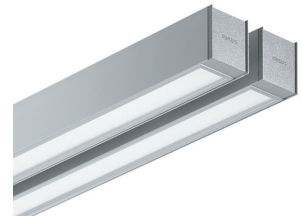
TCS680 C 1xTL5 HFP AC-MLO



TCS680 C 1xTL5 HFP D8



TCS680 C 2xTL5 HFP D8



TCS680 C 2xTL5 HFP AC-MLO

Approval and Application	
Ingress protection code	IP20
General Information	
Protection class IEC	Safety class I
Gear	HFP
Lamp family code	TL5
Lamp power	28 W
Mechanical and Housing	
Color	Aluminum

General Information

Order Code	Full Product Name	Optical cover/ lens type	Number of light sources	Optic type
911401014880	TCS680 C 1xTL5-28W HFP AC-MLO FU ALU	-	1 pc	Semi-high-gloss optic 3D micro- lamellae
911401014980	TCS680 C 1xTL5-28W HFP D8 FU ALU	Acrylate micro-lens optic	1 pc	-

Order Code	Full Product Name	Optical cover/ lens type	Number of light sources	Optic type
911401015080	TCS680 C 2xTL5-28W HFP D8 FU ALU	-	2 pcs	Semi-high-gloss optic 3D micro- lamellae
911401015180	TCS680 C 2xTL5-28W HFP AC-MLO FU ALU	Acrylate micro-lens optic	2 pcs	-

