



# As easy as 1, 2, 3

## Mark 10 Powerline

For companies looking to make their fixed-output linear T8, 4-pin CFL, and T5/HO fluorescent systems more cost effective and sustainable, Mark 10 Powerline ballasts provide an easy solution without the need for additional control leads. Simply, (1) replace the ballast, (2) replace the switch, (3) dim the lights, that is all it takes. It's that easy to bring the convenience and flexibility of fluorescent dimming to conference rooms, private offices, auditoriums, architectural cove lighting – anywhere dimming is required.

### Benefits

- Compatible with controls from numerous manufacturers without using separate control leads – Powerline dimming interface
- Ideal for frequent switching applications such as occupancy sensors and daylight harvesting – Programmed start operation

### Features

- Available in linear fluorescent and 4-pin compact fluorescent models
- Full range continuous dimming (100% light output down to 5% – T5HO to 1%)

### Application

- Conference rooms, private offices, auditoriums, architectural cove, auditoriums, educational facilities, hotels, restaurants, and department stores

Mark 10 Powerline

Versions



REZ15435M

REZ255435M

VEZ15435M

REZ1T42M2LD35M

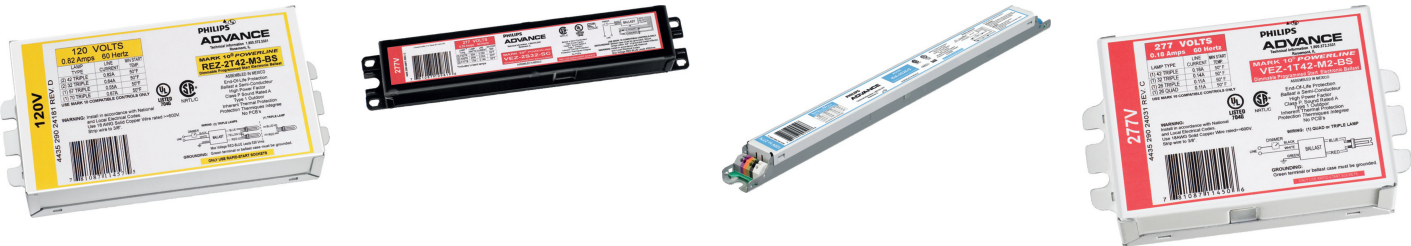


VEZ1T42M2LD35M

REZ2T42M3LD35M

REZ2S32SC35M

REZ1T42M2BS35M



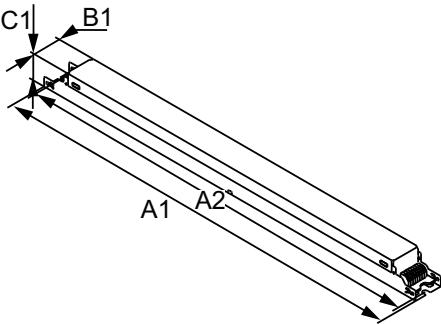
REZ2T42M3BS35M

VEZ2S32SC35M

IEZ124D35M

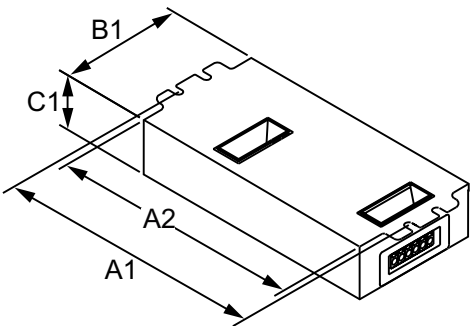
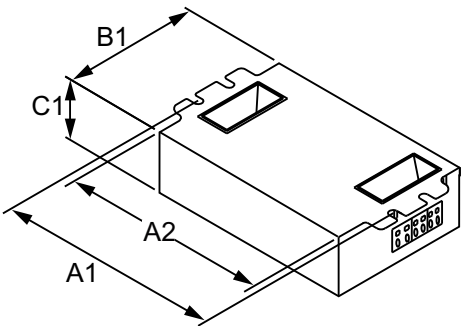
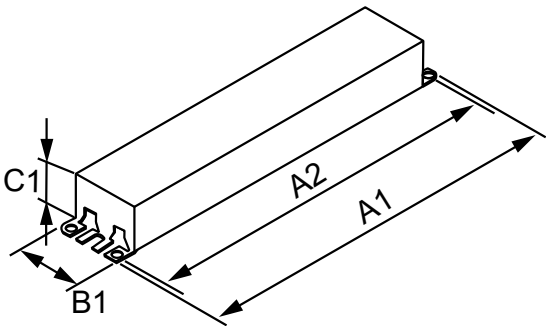
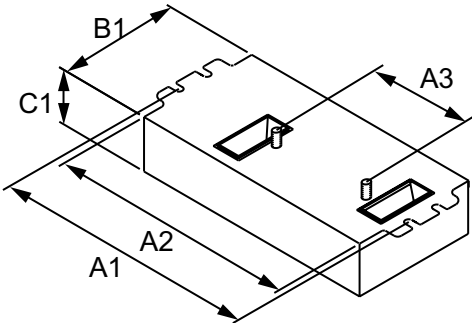
VEZ1T42M2BS35M

Dimensional drawing



Product	A1	B1	C1
MARK 10 POWERLINE IEZ2S28D35M	16.7 in	1.18 in	1.0 in
MARK 10 POWERLINE IEZ128D35M	16.7 in	1.18 in	1.0 in
MARK 10 POWERLINE VEZ15435M	16.70 in	16.34 in	1.18 in 1.00 in
MARK 10 POWERLINE REZ2S5435M	16.70 in	16.34 in	1.18 in 1.00 in
MARK 10 POWERLINE REZ15435M	16.70 in	16.34 in	1.18 in 1.00 in
MARK 10 POWERLINE VEZ2S5435M	16.70 in	16.34 in	1.18 in 1.00 in
MARK 10 POWERLINE IEZ2S24D35M	16.70 in	16.34 in	1.18 in 1.00 in

Dimensional drawing



Product	A1	A2	A3	B1	C1
MARK 10 POWERLINE VEZ1T42M2BS35M	4.55 in	4.20 in	2.00 in	3.00 in	1.29 in
MARK 10 POWERLINE REZ2T42M3BS35M	6.0 in	5.5 in	2.00 in	3.00 in	1.29 in
MARK 10 POWERLINE REZ2Q26M2BS35M	4.55 in	4.20 in	2.00 in	3.00 in	1.29 in
MARK 10 POWERLINE REZ1T42M2BS35M	4.55 in	4.20 in	2.00 in	3.00 in	1.29 in

Product	A1	A2	B1	C1
MARK 10 POWERLINE REZ2S32SC35I	9.5 in	8.90 in	1.7 in	1.18 in
MARK 10 POWERLINE REZ1TTS40SC35M	9.5 in	8.90 in	1.7 in	1.18 in
MARK 10 POWERLINE REZ132SC35M	9.5 in	8.90 in	1.7 in	1.18 in
MARK 10 POWERLINE VEZ132SC35M	9.5 in	8.90 in	1.7 in	1.18 in
MARK 10 POWERLINE VEZ3S32SC35M	9.5 in	8.90 in	1.7 in	1.18 in
MARK 10 POWERLINE VEZ2S32SC35M	9.5 in	8.90 in	1.7 in	1.18 in
MARK 10 POWERLINE REZ3S32SC35M	9.5 in	8.90 in	1.7 in	1.18 in
MARK 10 POWERLINE REZ2S32SC35M	9.5 in	8.90 in	1.7 in	1.18 in
MARK 10 POWERLINE REZ2TTS40SC35M	9.5 in	8.90 in	1.7 in	1.18 in

Product	A1	A2	B1	C1
MARK 10 POWERLINE REZ2Q18M2LD35M	4.55 in	4.20 in	3.00 in	1.29 in
MARK 10 POWERLINE VEZ2Q26M2LD35M	4.55 in	4.20 in	3.00 in	1.29 in
MARK 10 POWERLINE REZ2Q26M2LD35M	4.55 in	4.20 in	3.00 in	1.29 in
MARK 10 POWERLINE VEZ1T42M2LD35M	4.55 in	4.20 in	3.00 in	1.29 in
MARK 10 POWERLINE REZ1T42M2LD35M	4.55 in	4.20 in	3.00 in	1.29 in

Product	A1	A2	B1	C1
MARK 10 POWERLINE REZ2T42M3LD35M	6.0 in	5.5 in	3.00 in	1.29 in

Operating and Electrical	
Total Harmonic Distortion USA	10 %

Operating and Electrical

## Mark 10 Powerline

Order Code	Full Product Name	Input Frequency	Input Voltage
176230	MARK 10 POWERLINE ELE DIMMING BALLAST (1) F54T5/HO 120V	60 Hz	120 V
176248	MARK 10 POWERLINE ELE DIMMING BALLAST (2) F54T5/HO 120V	60 Hz	120 V
176669	MARK 10 POWERLINE ELE DIMMING BALLAST (1) F54T5/HO 277V	60 Hz	277 V
176677	MARK 10 POWERLINE ELE DIMMING BALLAST (2) F54T5/HO 277V	60 Hz	277 V
176685	MARK 10 POWERLINE ELE DIM BALLAST (1) 42W CFL (4-PIN) 120V	60 Hz	120 V
176842	MARK 10 POWERLINE ELE DIM BALLAST (2) 26W CFL (4-PIN) 120V	60 Hz	120 V
116426	MARK 10 POWERLINE ELE DIM BALLAST (2) 18W CFL (4-PIN) 120V	60 Hz	120 V
176693	MARK 10 POWERLINE ELE DIM BALLAST (1) 42W CFL (4-PIN) 277V	60 Hz	277 V
182543	MARK 10 POWERLINE ELE DIM BALLAST (2) 26W CFL (4-PIN) 277V	60 Hz	277 V
176701	MARK 10 POWERLINE ELE DIM BALLAST (2) 42W CFL (4-PIN) 120V	60 Hz	120 V
183053	MARK 10 POWERLINE ELE DIMMING BALLAST (2) F32T8 120V	60 Hz	120 V
182204	MARK 10 POWERLINE ELE DIMMING BALLAST (3) F32T8 120V	60 Hz	120 V
191056	MARK 10 POWERLINE ELE DIMMING BALLAST (1) F32T8 120V	60 Hz	120 V

### General Information

Order Code	Full Product Name	Number Of Lamps	Lamp Type
176230	MARK 10 POWERLINE ELE DIMMING BALLAST (1) F54T5/HO 120V	1 piece/unit	F54T5/HO
176248	MARK 10 POWERLINE ELE DIMMING BALLAST (2) F54T5/HO 120V	2 piece/unit	F54T5/HO
176669	MARK 10 POWERLINE ELE DIMMING BALLAST (1) F54T5/HO 277V	1 piece/unit	F54T5/HO
176677	MARK 10 POWERLINE ELE DIMMING BALLAST (2) F54T5/HO 277V	2 piece/unit	F54T5/HO
176685	MARK 10 POWERLINE ELE DIM BALLAST (1) 42W CFL (4-PIN) 120V	1 piece/unit	CFTR42W/ GX24Q
176842	MARK 10 POWERLINE ELE DIM BALLAST (2) 26W CFL (4-PIN) 120V	2 piece/unit	CFQ26W/ G24Q
116426	MARK 10 POWERLINE ELE DIM BALLAST (2) 18W CFL (4-PIN) 120V	2 piece/unit	CFQ18W/G24Q
176693	MARK 10 POWERLINE ELE DIM BALLAST (1) 42W CFL (4-PIN) 277V	1 piece/unit	CFTR42W/ GX24Q
182543	MARK 10 POWERLINE ELE DIM BALLAST (2) 26W CFL (4-PIN) 277V	2 piece/unit	CFQ26W/ G24Q
176701	MARK 10 POWERLINE ELE DIM BALLAST (2) 42W CFL (4-PIN) 120V	2 piece/unit	CFTR42W/ GX24Q

Order Code	Full Product Name	Input Frequency	Input Voltage
116400	MARK 10 POWERLINE ELE DIM BALLAST (1) 40W CFL (4-PIN) 120V	60 Hz	120 V
116442	MARK 10 POWERLINE ELE DIMMING BALLAST (2) F32T8 120V	60 Hz	120 V
119883	MARK 10 POWERLINE ELE DIM BALLAST (2) 40W CFL (4-PIN) 120V	60 Hz	120 V
182162	MARK 10 POWERLINE ELE DIM BALLAST (1) 42W CFL (4-PIN) 120V	60 Hz	120 V
182188	MARK 10 POWERLINE ELE DIM BALLAST (2) 26W CFL (4-PIN) 120V	60 Hz	120 V
182196	MARK 10 POWERLINE ELE DIM BALLAST (2) 42W CFL (4-PIN) 120V	60 Hz	120 V
183467	MARK 10 POWERLINE ELE DIMMING BALLAST (2) F32T8 277V	60 Hz	277 V
183616	MARK 10 POWERLINE ELE DIMMING BALLAST (3) F32T8 277V	60 Hz	277 V
183707	MARK 10 POWERLINE ELE DIMMING BALLAST (1) F32T8 277V	60 Hz	277 V
500751	MARK 10 POWERLINE ELE DIMMING BALLAST (1) F28T5 120-277V	50 to 60 Hz	120 to 277 V
500777	MARK 10 POWERLINE ELE DIMMING BALLAST (2) F28T5 120-277V	50 to 60 Hz	120 to 277 V
121186	MARK 10 POWERLINE ELE DIMMING BALLAST (2) F24T5HO 120-277V	50 to 60 Hz	120 to 277 V
118232	MARK 10 POWERLINE ELE DIM BALLAST (1) 42W CFL (4-PIN) 277V	60 Hz	277 V

Order Code	Full Product Name	Number Of Lamps	Lamp Type
183053	MARK 10 POWERLINE ELE DIMMING BALLAST (2) F32T8 120V	2 piece/unit	F32T8
182204	MARK 10 POWERLINE ELE DIMMING BALLAST (3) F32T8 120V	3 piece/unit	F32T8
191056	MARK 10 POWERLINE ELE DIMMING BALLAST (1) F32T8 120V	1 piece/unit	F32T8
116400	MARK 10 POWERLINE ELE DIM BALLAST (1) 40W CFL (4-PIN) 120V	1 piece/unit	FT40W/2G11
116442	MARK 10 POWERLINE ELE DIMMING BALLAST (2) F32T8 120V	2 piece/unit	F32T8
119883	MARK 10 POWERLINE ELE DIM BALLAST (2) 40W CFL (4-PIN) 120V	2 piece/unit	FT40W/2G11
182162	MARK 10 POWERLINE ELE DIM BALLAST (1) 42W CFL (4-PIN) 120V	1 piece/unit	CFTR42W/ GX24Q
182188	MARK 10 POWERLINE ELE DIM BALLAST (2) 26W CFL (4-PIN) 120V	2 piece/unit	CFQ26W/ G24Q
182196	MARK 10 POWERLINE ELE DIM BALLAST (2) 42W CFL (4-PIN) 120V	2 piece/unit	CFTR42W/ GX24Q
183467	MARK 10 POWERLINE ELE DIMMING BALLAST (2) F32T8 277V	2 piece/unit	F32T8

## Mark 10 Powerline

Order Code	Full Product Name	Number Of Lamps	Lamp Type
183616	MARK 10 POWERLINE ELE DIMMING BALLAST (3) F32T8 277V	3 piece/unit	F32T8
183707	MARK 10 POWERLINE ELE DIMMING BALLAST (1) F32T8 277V	1 piece/unit	F32T8
500751	MARK 10 POWERLINE ELE DIMMING BALLAST (1) F28T5 120-277V	1 piece/unit	F28T5

Order Code	Full Product Name	Number Of Lamps	Lamp Type
500777	MARK 10 POWERLINE ELE DIMMING BALLAST (2) F28T5 120-277V	2 piece/unit	F28T5
121186	MARK 10 POWERLINE ELE DIMMING BALLAST (2) F24T5HO 120-277V	2 piece/unit	F24T5/HO
118232	MARK 10 POWERLINE ELE DIM BALLAST (1) 42W CFL (4-PIN) 277V	1 piece/unit	CFTR42W/ GX24Q

### Mechanical and Housing

Order Code	Full Product Name	Housing
176230	MARK 10 POWERLINE ELE DIMMING BALLAST (1) F54T5/HO 120V	D
176248	MARK 10 POWERLINE ELE DIMMING BALLAST (2) F54T5/HO 120V	D
176669	MARK 10 POWERLINE ELE DIMMING BALLAST (1) F54T5/HO 277V	D
176677	MARK 10 POWERLINE ELE DIMMING BALLAST (2) F54T5/HO 277V	D
176685	MARK 10 POWERLINE ELE DIM BALLAST (1) 42W CFL (4-PIN) 120V	M2
176842	MARK 10 POWERLINE ELE DIM BALLAST (2) 26W CFL (4-PIN) 120V	M2
116426	MARK 10 POWERLINE ELE DIM BALLAST (2) 18W CFL (4-PIN) 120V	M2
176693	MARK 10 POWERLINE ELE DIM BALLAST (1) 42W CFL (4-PIN) 277V	M2
182543	MARK 10 POWERLINE ELE DIM BALLAST (2) 26W CFL (4-PIN) 277V	M2
176701	MARK 10 POWERLINE ELE DIM BALLAST (2) 42W CFL (4-PIN) 120V	M3
183053	MARK 10 POWERLINE ELE DIMMING BALLAST (2) F32T8 120V	SC
182204	MARK 10 POWERLINE ELE DIMMING BALLAST (3) F32T8 120V	SC
191056	MARK 10 POWERLINE ELE DIMMING BALLAST (1) F32T8 120V	SC

Order Code	Full Product Name	Housing
116400	MARK 10 POWERLINE ELE DIM BALLAST (1) 40W CFL (4-PIN) 120V	SC
116442	MARK 10 POWERLINE ELE DIMMING BALLAST (2) F32T8 120V	SC
119883	MARK 10 POWERLINE ELE DIM BALLAST (2) 40W CFL (4-PIN) 120V	SC
182162	MARK 10 POWERLINE ELE DIM BALLAST (1) 42W CFL (4-PIN) 120V	M2
182188	MARK 10 POWERLINE ELE DIM BALLAST (2) 26W CFL (4-PIN) 120V	M2
182196	MARK 10 POWERLINE ELE DIM BALLAST (2) 42W CFL (4-PIN) 120V	M3
183467	MARK 10 POWERLINE ELE DIMMING BALLAST (2) F32T8 277V	SC
183616	MARK 10 POWERLINE ELE DIMMING BALLAST (3) F32T8 277V	SC
183707	MARK 10 POWERLINE ELE DIMMING BALLAST (1) F32T8 277V	SC
500751	MARK 10 POWERLINE ELE DIMMING BALLAST (1) F28T5 120-277V	D
500777	MARK 10 POWERLINE ELE DIMMING BALLAST (2) F28T5 120-277V	D
121186	MARK 10 POWERLINE ELE DIMMING BALLAST (2) F24T5HO 120-277V	D
118232	MARK 10 POWERLINE ELE DIM BALLAST (1) 42W CFL (4-PIN) 277V	M2

