



CoreLine Wall-mounted – the clear choice for LED

CoreLine Wall-mounted

Whether for a new building or renovation of an existing space, customers want lighting solutions that provide quality of light and substantial energy and maintenance savings. The new CoreLine Wall-mounted range of LED products can be used to replace traditional wall-mounted luminaires incorporating compact fluorescent lamps. The process of selecting, installing and maintaining is so easy – it's a simple switch.

Benefits

- Up to 55% energy savings compared with luminaires with PL-C lamps
- Direct replacement for traditional wall-mounted luminaires
- Complete range covering all application requirements in one product (light levels, IP65, IK10, certified emergency lighting, built-in controls)

Features

- Unobtrusive design
- Three lumen packages replacing traditional wall-mounted luminaires with 1x18 W / 2x18 W / 2x26 W PL-C
- Water- and vandal-proof as standard
- Phase-cut dimming as standard
- Frosted diffuser ensuring homogeneous light effect and visual comfort
- Optional emergency lighting
- Optional on/off movement detection or programmed 100%-10%-0% corridor dimming functionality

CoreLine Wall-mounted

Application

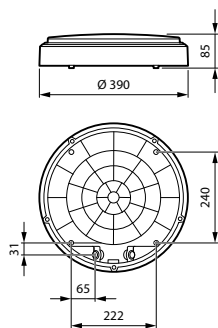
- Corridors
- Staircases
- Public entrance areas
- Bathrooms
- Emergency exits
- Parking garages
- Outdoor safety lighting

Versions



CoreLine wall-mounted WL140V All-in

Dimensional drawing



Product details



CoreLine Wall-mounted WL140V
Rim Black



CoreLine Wall-mounted WL140V
Rim Grey

CoreLine Wall-mounted

Product details



CoreLine Wall-mounted WL140V
Wall-mounted Black



CoreLine Wall-mounted WL140V
Wall-mounted PSU



CoreLine Wall-mounted WL140V
Ceiling-mounted Grey



CoreLine Wall-mounted WL140V
Ceiling-mounted Black



CoreLine Wall-mounted WL140V
Wall-mounted White with Half-
moon Accessory



CoreLine Wall-mounted WL140V
Wall-mounted Grey with Half-
moon Accessory



Coreline Wall-mounted WL140V
Top View (with screw locations)



CoreLine Wall-mounted WL140V
Wall-mounted Switchable Lumen
& CCT

CoreLine Wall-mounted

Product details



CoreLine Wall-mounted WL140V
Half-moon Accessory Black



CoreLine Wall-mounted WL140V
Half-moon Accessory Grey



CoreLine Wall-mounted WL140V
Ceiling-mounted



CoreLine Wall-mounted WL140V
Wall-mounted PSR MDU



CoreLine Wall-mounted WL140V
Wall-mounted Grey



CoreLine Wall-mounted WL140V
Half-moon Accessory White



Coreline Wall-mounted WL140V
Top View

CoreLine Wall-mounted

General Information	
CE mark	Yes
Driver included	Yes
Flammability mark	-
Glow-wire test	Temperature 850 °C, duration 30 s
Number of gear units	1 unit
Light Technical	
Beam angle of light source	120 degree(s)
Color rendering index (CRI)	>80
Optic type	Symmetrical
Flickering value (PstLM) - Flickering value as per EN 61000-3-3	1
Stroboscopic effect visibility measure (SVM)	1.6
Operating and Electrical	
Input Voltage	220-240 V
Line Frequency	50 or 60 Hz
Mechanical and Housing	
Housing Color	White
Approval and Application	
Protection class IEC	Safety class II
Mech. impact protection code	IK10
Ingress protection code	IP65
Initial Performance (IEC Compliant)	
Luminous flux tolerance	+/-10%

General Information (1/2)

Order Code	Full Product Name	Type of emergency lighting battery	ENEC mark	Embedded control	Light source replaceable
52879699	WL140V LED12_20S/827_830_840 PSU WH	-	ENEC mark	-	Yes
52880299	WL140V LED20_34S/827_830_840 PSU WH	-	ENEC mark	-	Yes
97848800	WL140V LED12S/830 PSED WH	Lithium	-	-	No
97849500	WL140V LED12S/840 PSED WH	Lithium	-	-	No
97852500	WL140V LED20S/830 PSED WH	Lithium	-	-	No
97853200	WL140V LED20S/840 PSED WH	Lithium	-	-	No
97857000	WL140V LED34S/840 PSED WH	Lithium	-	-	No
97860000	WL140V LED20S/830 WIA WH	-	-	-	No
97862400	WL140V LED34S/830 WIA WH	-	-	-	No
97869300	WL140V LED20S/840 PSED ELB3 WH	Lithium	-	-	No
97873000	WL140V LED34S/840 PSED ELB3 WH	Lithium	-	-	No
97875400	WL140V LED34S/840 PSR ELB3 MDU WH	Lithium	-	Programmable movement and light sensor with wireless grouping	No
52871099	WL140V LED12S/830 PSU WH	-	ENEC mark	-	Yes
52872799	WL140V LED12S/840 PSU WH	-	ENEC mark	-	Yes
52873499	WL140V LED20S/830 PSU WH	-	ENEC mark	-	Yes
52874199	WL140V LED20S/840 PSU WH	-	ENEC mark	-	Yes
52875899	WL140V LED34S/830 PSU WH	-	ENEC mark	-	Yes
52876599	WL140V LED34S/840 PSU WH	-	ENEC mark	-	Yes
52877299	WL140V LED20S/830 PSU MDU WH	-	ENEC mark	Programmable movement and light sensor	Yes
52878999	WL140V LED20S/840 PSU MDU WH	-	ENEC mark	Programmable movement and light sensor	Yes
53082999	WL140V LED12S/830 PSR MDU WH	-	ENEC mark	Programmable movement and light sensor with wireless grouping	Yes

CoreLine Wall-mounted

Order Code	Full Product Name	Type of emergency lighting	ENEC mark	Embedded control	Light source replaceable
		battery			
53083699	WL140V LED12S/840 PSR MDU WH	-	ENEC mark	Programmable movement and light sensor with wireless grouping	Yes
53084399	WL140V LED20S/830 PSR MDU WH	-	ENEC mark	Programmable movement and light sensor with wireless grouping	Yes
53085099	WL140V LED20S/840 PSR MDU WH	-	ENEC mark	Programmable movement and light sensor with wireless grouping	Yes
53086799	WL140V LED34S/830 PSR MDU WH	-	ENEC mark	Programmable movement and light sensor with wireless grouping	Yes
53087499	WL140V LED34S/840 PSR MDU WH	-	ENEC mark	Programmable movement and light sensor with wireless grouping	Yes

General Information (2/2)

Order Code	Full Product Name	Product family code	Order Code	Full Product Name	Product family code
52879699	WL140V LED12_20S/827_830_840 PSU WH	-	52872799	WL140V LED12S/840 PSU WH	-
52880299	WL140V LED20_34S/827_830_840 PSU WH	-	52873499	WL140V LED20S/830 PSU WH	-
97848800	WL140V LED12S/830 PSED WH	WL140V	52874199	WL140V LED20S/840 PSU WH	-
97849500	WL140V LED12S/840 PSED WH	WL140V	52875899	WL140V LED34S/830 PSU WH	-
97852500	WL140V LED20S/830 PSED WH	WL140V	52876599	WL140V LED34S/840 PSU WH	-
97853200	WL140V LED20S/840 PSED WH	WL140V	52877299	WL140V LED20S/830 PSU MDU WH	-
97857000	WL140V LED34S/840 PSED WH	WL140V	52878999	WL140V LED20S/840 PSU MDU WH	-
97860000	WL140V LED20S/830 WIA WH	WL140V	53082999	WL140V LED12S/830 PSR MDU WH	-
97862400	WL140V LED34S/830 WIA WH	WL140V	53083699	WL140V LED12S/840 PSR MDU WH	-
97869300	WL140V LED20S/840 PSED ELB3 WH	WL140V	53084399	WL140V LED20S/830 PSR MDU WH	-
97873000	WL140V LED34S/840 PSED ELB3 WH	WL140V	53085099	WL140V LED20S/840 PSR MDU WH	-
97875400	WL140V LED34S/840 PSR ELB3 MDU WH	WL140V	53086799	WL140V LED34S/830 PSR MDU WH	-
52871099	WL140V LED12S/830 PSU WH	-	53087499	WL140V LED34S/840 PSR MDU WH	-

Light Technical

			Correlated Color Temperature	Luminous Efficacy (rated)	Luminous
Order Code	Full Product Name	"All-in" Type	(Nom)	(Nom)	Flux
52879699	WL140V	"All-in" Multi	2700 K	100 lm/W	1,200 lm
	LED12_20S/ 827_830_840	Lumen and Multi Color			
	PSU WH	Temperature			

			Correlated Color Temperature	Luminous Efficacy (rated)	Luminous
Order Code	Full Product Name	"All-in" Type	(Nom)	(Nom)	Flux
52880299	WL140V	"All-in" Multi	2700 K	100 lm/W	2,000 lm
	LED20_34S/ 827_830_840	Lumen and Multi Color			
	PSU WH	Temperature			

CoreLine Wall-mounted

Order Code	Full Product Name	"All-in" Type	Correlated Color Temperature (Nom)	Luminous Efficacy (rated) (Nom)	Luminous Flux
97848800	WL140V LED12S/830 PSED WH	-	3000 K	88 lm/W	1,200 lm
97849500	WL140V LED12S/840 PSED WH	-	4000 K	92 lm/W	1,250 lm
97852500	WL140V LED20S/830 PSED WH	-	3000 K	95 lm/W	2,100 lm
97853200	WL140V LED20S/840 PSED WH	-	4000 K	100 lm/W	2,200 lm
97857000	WL140V LED34S/840 PSED WH	-	4000 K	95 lm/W	3,400 lm
97860000	WL140V LED20S/830 WIA WH	-	3000 K	95 lm/W	2,100 lm
97862400	WL140V LED34S/830 WIA WH	-	3000 K	94 lm/W	3,350 lm
97869300	WL140V LED20S/840 PSED ELB3 WH	-	4000 K	88 lm/W	2,200 lm
97873000	WL140V LED34S/840 PSED ELB3 WH	-	4000 K	88 lm/W	3,400 lm
97875400	WL140V LED34S/840 PSR ELB3 MDU WH	-	4000 K	80 lm/W	3,100 lm
52871099	WL140V LED12S/830 PSU WH	-	3000 K	105 lm/W	1,275 lm
52872799	WL140V LED12S/840 PSU WH	-	4000 K	110 lm/W	1,350 lm

Order Code	Full Product Name	"All-in" Type	Correlated Color Temperature (Nom)	Luminous Efficacy (rated) (Nom)	Luminous Flux
52873499	WL140V LED20S/830 PSU WH	-	3000 K	105 lm/W	2,100 lm
52874199	WL140V LED20S/840 PSU WH	-	4000 K	110 lm/W	2,200 lm
52875899	WL140V LED34S/830 PSU WH	-	3000 K	105 lm/W	3,400 lm
52876599	WL140V LED34S/840 PSU WH	-	4000 K	110 lm/W	3,550 lm
52877299	WL140V LED20S/830 PSU MDU WH	-	3000 K	95 lm/W	1,850 lm
52878999	WL140V LED20S/840 PSU MDU WH	-	4000 K	100 lm/W	1,950 lm
53082999	WL140V LED12S/830 PSR MDU WH	-	3000 K	90 lm/W	1,200 lm
53083699	WL140V LED12S/840 PSR MDU WH	-	4000 K	95 lm/W	1,250 lm
53084399	WL140V LED20S/830 PSR MDU WH	-	3000 K	90 lm/W	2,100 lm
53085099	WL140V LED20S/840 PSR MDU WH	-	4000 K	95 lm/W	2,200 lm
53086799	WL140V LED34S/830 PSR MDU WH	-	3000 K	98 lm/W	2,950 lm
53087499	WL140V LED34S/840 PSR MDU WH	-	4000 K	103 lm/W	3,100 lm

Operating and Electrical

Order Code	Full Product Name	Power Consumption
52879699	WL140V LED12_20S/827_830_840 PSU WH	20 W
52880299	WL140V LED20_34S/827_830_840 PSU WH	33 W
97848800	WL140V LED12S/830 PSED WH	13.5 W
97849500	WL140V LED12S/840 PSED WH	13.5 W
97852500	WL140V LED20S/830 PSED WH	22 W
97853200	WL140V LED20S/840 PSED WH	22 W
97857000	WL140V LED34S/840 PSED WH	35.5 W
97860000	WL140V LED20S/830 WIA WH	22 W
97862400	WL140V LED34S/830 WIA WH	35.5 W

Order Code	Full Product Name	Power Consumption
97869300	WL140V LED20S/840 PSED ELB3 WH	25 W
97873000	WL140V LED34S/840 PSED ELB3 WH	38.5 W
97875400	WL140V LED34S/840 PSR ELB3 MDU WH	38.5 W
52871099	WL140V LED12S/830 PSU WH	12 W
52872799	WL140V LED12S/840 PSU WH	12 W
52873499	WL140V LED20S/830 PSU WH	20 W
52874199	WL140V LED20S/840 PSU WH	20 W
52875899	WL140V LED34S/830 PSU WH	32 W
52876599	WL140V LED34S/840 PSU WH	32 W

CoreLine Wall-mounted

Order Code	Full Product Name	Power Consumption
52877299	WL140V LED20S/830 PSU MDU WH	19 W
52878999	WL140V LED20S/840 PSU MDU WH	19 W
53082999	WL140V LED12S/830 PSR MDU WH	13 W
53083699	WL140V LED12S/840 PSR MDU WH	13 W

Order Code	Full Product Name	Power Consumption
53084399	WL140V LED20S/830 PSR MDU WH	23 W
53085099	WL140V LED20S/840 PSR MDU WH	23 W
53086799	WL140V LED34S/830 PSR MDU WH	30 W
53087499	WL140V LED34S/840 PSR MDU WH	30 W

Temperature

Order Code	Full Product Name	Ambient temperature range
52879699	WL140V LED12_20S/827_830_840 PSU WH	-20 to +40 °C
52880299	WL140V LED20_34S/827_830_840 PSU WH	-20 to +40 °C
97848800	WL140V LED12S/830 PSED WH	0 to +25 °C
97849500	WL140V LED12S/840 PSED WH	0 to +25 °C
97852500	WL140V LED20S/830 PSED WH	0 to +25 °C
97853200	WL140V LED20S/840 PSED WH	0 to +25 °C
97857000	WL140V LED34S/840 PSED WH	0 to +25 °C
97860000	WL140V LED20S/830 WIA WH	-20 to +35 °C
97862400	WL140V LED34S/830 WIA WH	-20 to +35 °C
97869300	WL140V LED20S/840 PSED ELB3 WH	0 to +25 °C
97873000	WL140V LED34S/840 PSED ELB3 WH	0 to +25 °C
97875400	WL140V LED34S/840 PSR ELB3 MDU WH	0 to +25 °C
52871099	WL140V LED12S/830 PSU WH	-20 to +40 °C

Order Code	Full Product Name	Ambient temperature range
52872799	WL140V LED12S/840 PSU WH	-20 to +40 °C
52873499	WL140V LED20S/830 PSU WH	-20 to +40 °C
52874199	WL140V LED20S/840 PSU WH	-20 to +40 °C
52875899	WL140V LED34S/830 PSU WH	-20 to +40 °C
52876599	WL140V LED34S/840 PSU WH	-20 to +40 °C
52877299	WL140V LED20S/830 PSU MDU WH	-20 to +40 °C
52878999	WL140V LED20S/840 PSU MDU WH	-20 to +40 °C
53082999	WL140V LED12S/830 PSR MDU WH	-20 to +40 °C
53083699	WL140V LED12S/840 PSR MDU WH	-20 to +40 °C
53084399	WL140V LED20S/830 PSR MDU WH	-20 to +40 °C
53085099	WL140V LED20S/840 PSR MDU WH	-20 to +40 °C
53086799	WL140V LED34S/830 PSR MDU WH	-20 to +40 °C
53087499	WL140V LED34S/840 PSR MDU WH	-20 to +40 °C

Controls and Dimming

Order Code	Full Product Name	Dimmable
52879699	WL140V LED12_20S/827_830_840 PSU WH	No
52880299	WL140V LED20_34S/827_830_840 PSU WH	No
97848800	WL140V LED12S/830 PSED WH	Yes
97849500	WL140V LED12S/840 PSED WH	Yes
97852500	WL140V LED20S/830 PSED WH	Yes
97853200	WL140V LED20S/840 PSED WH	Yes
97857000	WL140V LED34S/840 PSED WH	Yes
97860000	WL140V LED20S/830 WIA WH	Yes
97862400	WL140V LED34S/830 WIA WH	Yes
97869300	WL140V LED20S/840 PSED ELB3 WH	Yes
97873000	WL140V LED34S/840 PSED ELB3 WH	Yes
97875400	WL140V LED34S/840 PSR ELB3 MDU WH	Yes
52871099	WL140V LED12S/830 PSU WH	No

Order Code	Full Product Name	Dimmable
52872799	WL140V LED12S/840 PSU WH	No
52873499	WL140V LED20S/830 PSU WH	No
52874199	WL140V LED20S/840 PSU WH	No
52875899	WL140V LED34S/830 PSU WH	No
52876599	WL140V LED34S/840 PSU WH	No
52877299	WL140V LED20S/830 PSU MDU WH	No
52878999	WL140V LED20S/840 PSU MDU WH	No
53082999	WL140V LED12S/830 PSR MDU WH	Yes
53083699	WL140V LED12S/840 PSR MDU WH	Yes
53084399	WL140V LED20S/830 PSR MDU WH	Yes
53085099	WL140V LED20S/840 PSR MDU WH	Yes
53086799	WL140V LED34S/830 PSR MDU WH	Yes
53087499	WL140V LED34S/840 PSR MDU WH	Yes

Emergency Operation

Order Code	Full Product Name	Emergency flux	Power consumption during Central DC emergency mode
52879699	WL140V LED12_20S/827_830_840 PSU WH	-	-
52880299	WL140V LED20_34S/827_830_840 PSU WH	-	-
97848800	WL140V LED12S/830 PSED WH	350 lm	3 W
97849500	WL140V LED12S/840 PSED WH	350 lm	3 W

Order Code	Full Product Name	Emergency flux	Power consumption during Central DC emergency mode
97852500	WL140V LED20S/830 PSED WH	350 lm	3 W
97853200	WL140V LED20S/840 PSED WH	350 lm	3 W
97857000	WL140V LED34S/840 PSED WH	350 lm	3 W
97860000	WL140V LED20S/830 WIA WH	-	-
97862400	WL140V LED34S/830 WIA WH	-	-

CoreLine Wall-mounted

Order Code	Full Product Name	Emergency flux	Power consumption
			during Central DC emergency mode
97869300	WL140V LED20S/840 PSED ELB3 WH	350 lm	3 W
97873000	WL140V LED34S/840 PSED ELB3 WH	350 lm	3 W
97875400	WL140V LED34S/840 PSR ELB3 MDU WH	350 lm	3 W
52871099	WL140V LED12S/830 PSU WH	-	-
52872799	WL140V LED12S/840 PSU WH	-	-
52873499	WL140V LED20S/830 PSU WH	-	-
52874199	WL140V LED20S/840 PSU WH	-	-

Initial Performance (IEC Compliant)

Order Code	Full Product Name	Initial chromaticity
52879699	WL140V LED12_20S/827_830_840 PSU WH	(0.3818,0.3797) SDCM <5
52880299	WL140V LED20_34S/827_830_840 PSU WH	(0.3818,0.3797) SDCM <5
97848800	WL140V LED12S/830 PSED WH	(0.4338,0.4030) SDCM <3
97849500	WL140V LED12S/840 PSED WH	(0.3818,0.3797) SDCM <3
97852500	WL140V LED20S/830 PSED WH	(0.4338,0.4030) SDCM <3
97853200	WL140V LED20S/840 PSED WH	(0.3818,0.3797) SDCM <3
97857000	WL140V LED34S/840 PSED WH	(0.3818,0.3797) SDCM <3
97860000	WL140V LED20S/830 WIA WH	(0.4338,0.4030) SDCM <3
97862400	WL140V LED34S/830 WIA WH	(0.4338,0.4030) SDCM <3
97869300	WL140V LED20S/840 PSED ELB3 WH	(0.3818,0.3797) SDCM <3
97873000	WL140V LED34S/840 PSED ELB3 WH	(0.3818,0.3797) SDCM <3
97875400	WL140V LED34S/840 PSR ELB3 MDU WH	(0.3818,0.3797) SDCM <3
52871099	WL140V LED12S/830 PSU WH	(0.4338,0.4030) SDCM <3

Application Conditions

Order Code	Full Product Name	Maximum dim	Suitable for
		level	random switching
52879699	WL140V LED12_20S/827_830_840 PSU WH	Not applicable	No
52880299	WL140V LED20_34S/827_830_840 PSU WH	Not applicable	No
97848800	WL140V LED12S/830 PSED WH	1%	No
97849500	WL140V LED12S/840 PSED WH	1%	No
97852500	WL140V LED20S/830 PSED WH	1%	No
97853200	WL140V LED20S/840 PSED WH	1%	No
97857000	WL140V LED34S/840 PSED WH	1%	No
97860000	WL140V LED20S/830 WIA WH	1%	No
97862400	WL140V LED34S/830 WIA WH	1%	No
97869300	WL140V LED20S/840 PSED ELB3 WH	1%	No
97873000	WL140V LED34S/840 PSED ELB3 WH	1%	No
97875400	WL140V LED34S/840 PSR ELB3 MDU WH	10%	Yes

Order Code	Full Product Name	Emergency flux	Power consumption
			during Central DC emergency mode
52875899	WL140V LED34S/830 PSU WH	-	-
52876599	WL140V LED34S/840 PSU WH	-	-
52877299	WL140V LED20S/830 PSU MDU WH	-	-
52878999	WL140V LED20S/840 PSU MDU WH	-	-
53082999	WL140V LED12S/830 PSR MDU WH	-	-
53083699	WL140V LED12S/840 PSR MDU WH	-	-
53084399	WL140V LED20S/830 PSR MDU WH	-	-
53085099	WL140V LED20S/840 PSR MDU WH	-	-
53086799	WL140V LED34S/830 PSR MDU WH	-	-
53087499	WL140V LED34S/840 PSR MDU WH	-	-

Order Code	Full Product Name	Initial chromaticity
52872799	WL140V LED12S/840 PSU WH	(0.3818,0.3797) SDCM <3
52873499	WL140V LED20S/830 PSU WH	(0.4338,0.4030) SDCM <3
52874199	WL140V LED20S/840 PSU WH	(0.3818,0.3797) SDCM <3
52875899	WL140V LED34S/830 PSU WH	(0.4338,0.4030) SDCM <3
52876599	WL140V LED34S/840 PSU WH	(0.3818,0.3797) SDCM <3
52877299	WL140V LED20S/830 PSU MDU WH	(0.4338,0.4030) SDCM <3
52878999	WL140V LED20S/840 PSU MDU WH	(0.3818,0.3797) SDCM <3
53082999	WL140V LED12S/830 PSR MDU WH	(0.4338,0.4030) SDCM <3
53083699	WL140V LED12S/840 PSR MDU WH	(0.3818,0.3797) SDCM <3
53084399	WL140V LED20S/830 PSR MDU WH	(0.4338,0.4030) SDCM <3
53085099	WL140V LED20S/840 PSR MDU WH	(0.3818,0.3797) SDCM <3
53086799	WL140V LED34S/830 PSR MDU WH	(0.4338,0.4030) SDCM <3
53087499	WL140V LED34S/840 PSR MDU WH	(0.3818,0.3797) SDCM <3

Order Code	Full Product Name	Maximum dim	Suitable for
		level	random switching
52871099	WL140V LED12S/830 PSU WH	Not applicable	No
52872799	WL140V LED12S/840 PSU WH	Not applicable	No
52873499	WL140V LED20S/830 PSU WH	Not applicable	No
52874199	WL140V LED20S/840 PSU WH	Not applicable	No
52875899	WL140V LED34S/830 PSU WH	Not applicable	No
52876599	WL140V LED34S/840 PSU WH	Not applicable	No
52877299	WL140V LED20S/830 PSU MDU WH	Not applicable	No
52878999	WL140V LED20S/840 PSU MDU WH	Not applicable	No
53082999	WL140V LED12S/830 PSR MDU WH	10%	No
53083699	WL140V LED12S/840 PSR MDU WH	10%	No
53084399	WL140V LED20S/830 PSR MDU WH	10%	No
53085099	WL140V LED20S/840 PSR MDU WH	10%	No
53086799	WL140V LED34S/830 PSR MDU WH	10%	No
53087499	WL140V LED34S/840 PSR MDU WH	10%	No

CoreLine Wall-mounted

