



# Digital Cinema Xenon C-type lamps

## Christie digital cinema projectors

Digital Xenon Cinema C-type lamps are ideal for today's demanding 3D and 2D digital cinema presentations. They are especially designed for Christie projectors. There is a choice of four power ratings in the C-type Digital Cinema Xenon lamps range: 2000W, 3000W, 4500W, or 6000W. There is also a choice of three power ratings in the CH-type Digital Helios lamps range: 2000W, 3000W, and 4200W power ratings. All these lamps produce the very high light output needed to maximize screen brightness and enhance the dramatic effect for the viewer. These long-life digital lamps also provide constant color temperature characteristics, and meet all of the stringent arc-stability requirements for consistent customer satisfaction. In addition to C-type Digital Cinema Xenon lamps there are B-, N-, S-, and TA-type Digital Cinema Xenon lamps. These are all individually customized per projector, so there is a different, perfect-fitting lamp for each projector model to ensure optimized projector performance.

### Benefits

- Increased brightness on the screen
- Optimum projector performance
- Constant color temperature
- High arc stability and long life

### Features

- Higher light output than standard lamps
- Customized by projector model
- Pure xenon fill gas
- Proprietary, advanced electrode design

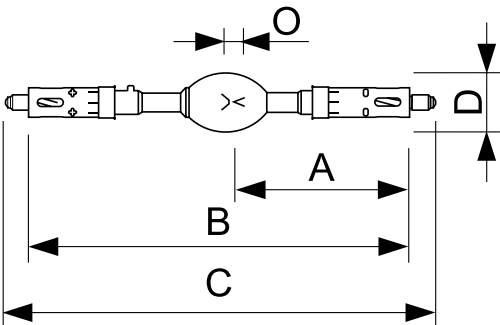
### Application

- Cinema projection

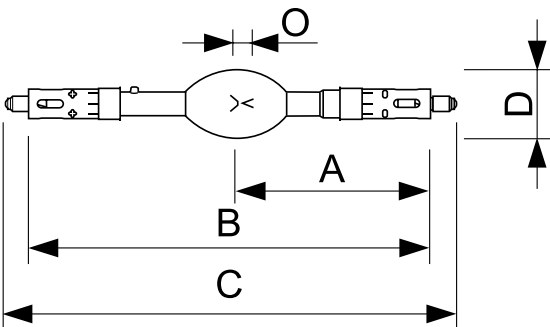
Versions



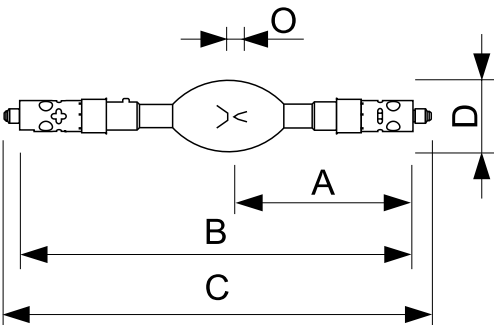
Dimensional drawing



Product	O	D	B (max)	C (max)	A
XDC 2000 C	4.4 mm	55 mm	350 mm	403 mm	161.5 mm



Product	O	D	B (max)	C (max)	A
XDC 3000 C	5.5 mm	60 mm	350 mm	403 mm	161.5 mm



Product	O	D	B (max)	C (max)	A
XDC 6000 C	8.0 mm	70 mm	381 mm	417 mm	165.5 mm

# Christie digital cinema projectors

## General Information

Main Application	Cinema
------------------	--------

## Operating and Electrical

Order Code	Full Product Name	Lamp Current Span	Lamp Current (Nom)	Voltage (Nom)	Power (Rated) (Nom)
928411706201	XDC 3000 C	90/120 A	110 A	29 V	3000 W
928413306301	XDC 2000 C	50/90 A	80 A	25 V	2000 W

Order Code	Full Product Name	Lamp Current Span	Lamp Current (Nom)	Voltage (Nom)	Power (Rated) (Nom)
928416706201	XDC 6000 C	110/160 A	155 A	40 V	6000 W

## General Information

Order Code	Full Product Name	Nominal Lifetime (Nom)	Operating Position
928411706201	XDC 3000 C	1500 h	P20
928413306301	XDC 2000 C	2400 h	P30

Order Code	Full Product Name	Nominal Lifetime (Nom)	Operating Position
928416706201	XDC 6000 C	600 h	P20

