

Digital Cinema Xenon TA-type lamps

Other digital cinema projectors

Digital Xenon Cinema TA-type lamps are ideal for today's demanding 3D and 2D digital cinema presentations. There is a choice of four power ratings in the TA-type Digital Cinema Xenon lamps range: 3000W, 4500W, 6000W or 6500W. These lamps produce the very high light output needed to maximize screen brightness and enhance the dramatic effect for the viewer. These long-life digital lamps also provide constant color temperature characteristics, and meet all of the stringent arc-stability requirements for consistent customer satisfaction. In addition to TA-type Digital Cinema Xenon lamps there are B-, C-, N-, and S-type Digital Cinema Xenon lamps. These are all individually customized per projector, so there is a different, perfect-fitting lamp for each projector model to ensure optimized projector performance.

Benefits

- Increased brightness on the screen
- Optimum projector performance
- Constant color temperature
- High arc stability and long life

Features

- Higher light output than standard lamps
- Customized by projector model
- Pure xenon fill gas
- Proprietary, advanced electrode design

Application

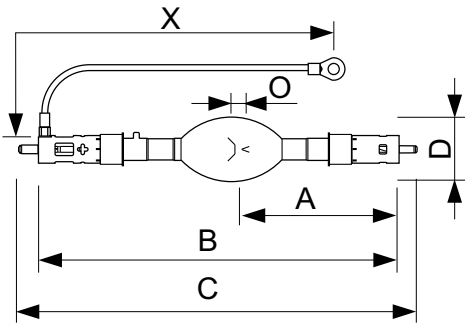
- Cinema projection

Other digital cinema projectors

Versions



Dimensional drawing



Product	O	D	X	B (max)	C (max)	A
XDC 4500 TA	6.0 mm	60 mm	400 mm	370 mm	410 mm	171.5 mm

