



Product Description

MSR Short Arc

MSR Short Arc – for longer life The lamp's short arc and compact design helps enable a compact luminaire that provides high beam intensity, while the excellent colour rendition characteristics help ensure optimal colours on stage. The highly innovative P3 technology, developed by Philips, allows MSR Short Arc lamps to be used at higher temperatures in any burning position. The result? Longer lifetime, fewer early failures and a highly consistent performance throughout the lamp's lifetime.

Benefits

- High luminous efficacy
- Very compact arc
- Good colour rendering

Features

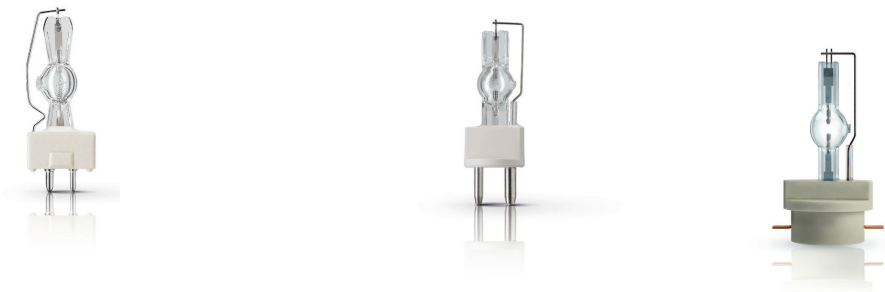
- Run-up time max. 2 minutes
- Restrike time 5 – 10 minutes, depending on cooling conditions
- Non-dimmable

Application

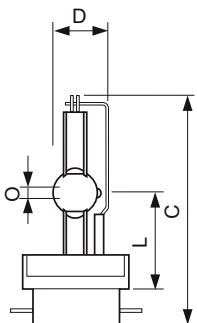
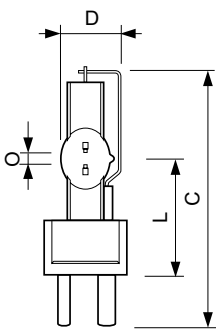
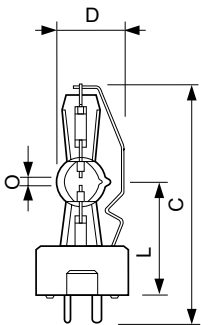
- Entertainment

MSR Short Arc

Versions



Dimensional drawing



Product	D (max)	O	L (min)	L (max)	L	C (max)
MSR 700 SA 1CT/4	25 mm	4.0 mm	38 mm	40 mm	39 mm	83 mm
MSR 400 SA 1CT/40	23.5 mm	3.0 mm	36 mm	37 mm	36.5 mm	80 mm

Product	D (max)	O	L (min)	L (max)	L	C (max)
MSR 2000 SA 1CT/8	34 mm	7.0 mm	58 mm	60 mm	59 mm	135 mm
MSR 1200 SA 1CT/4	34 mm	7.0 mm	58 mm	60 mm	59 mm	135 mm

Product	D (max)	O	L (min)	L (max)	L	C (max)
MSR Gold 1200 SA/SE 1CT/3	26.1 mm	5.5 mm	44 mm	46 mm	45 mm	109 mm

MSR Short Arc

General Information

Life To 50% Failures (Nom)	750 h
Operating Position	UNIVERSAL

Light Technical

Colour Code	-
-------------	---

Controls and Dimming

Order Code	Full Product Name	Dimmable
928170205114	MSR 400 SA 1CT/40	no
928170305115	MSR 700 SA 1CT/4	no
928170905115	MSR 1200 SA 1CT/4	no

Order Code	Full Product Name	Dimmable
928173205114	MSR 2000 SA 1CT/8	yes
928174605114	MSR Gold 1200 SA/SE 1CT/3	yes

Operating and Electrical

Order Code	Full Product Name	Lamp Current (Nom)	Power (Rated)
			(Nom)
928170205114	MSR 400 SA 1CT/40	8.4 A	400 W
928170305115	MSR 700 SA 1CT/4	11 A	700 W
928170905115	MSR 1200 SA 1CT/4	13.8 A	1200 W

Order Code	Full Product Name	Lamp Current (Nom)	Power (Rated)
			(Nom)
928173205114	MSR 2000 SA 1CT/8	21.5 A	2000 W
928174605114	MSR Gold 1200 SA/SE 1CT/3	15 A	1200 W

General Information

Order Code	Full Product Name	Cap-Base	Main Application	System
				Description
928170205114	MSR 400 SA 1CT/40	GY9.5	Studio/Disco	Short Arc
928170305115	MSR 700 SA 1CT/4	GY9.5	Studio/Disco	Short Arc
928170905115	MSR 1200 SA 1CT/4	GY22	Studio/Disco	Short Arc

Order Code	Full Product Name	Cap-Base	Main Application	System
				Description
928173205114	MSR 2000 SA 1CT/8	GY22	Studio/Disco	Short Arc
928174605114	MSR Gold 1200 SA/SE 1CT/3	PGJ50	Entertainment	SA/SE

Light Technical

Order Code	Full Product Name	Correlated Colour Temperature (Nom)	Colour Rendering Index (Nom)	Luminous Flux (Min)	Luminous Flux (Nom)
		(Nom)	(Nom)	(Min)	(Nom)
928170205114	MSR 400 SA 1CT/40	5600 K	75	23500 lm	30000 lm
928170305115	MSR 700 SA 1CT/4	5600 K	80	49500 lm	55000 lm
928170905115	MSR 1200 SA 1CT/4	6000 K	80	80000 lm	96000 lm

Order Code	Full Product Name	Correlated Colour Temperature (Nom)	Colour Rendering Index (Nom)	Luminous Flux (Min)	Luminous Flux (Nom)
		(Nom)	(Nom)	(Min)	(Nom)
928173205114	MSR 2000 SA 1CT/8	6000 K	89	164000 lm	174000 lm
928174605114	MSR Gold 1200 SA/SE 1CT/3	6000 K	80	87000 lm	93000 lm

Colour Rendering Diagrams

