



# Halogen High Voltage SE (Film/Studio) – stars on film and video

## Halogen High Voltage SE (Film/Studio)

The high, constant output and consistent color temperature of these single ended halogen lamps ensure attractive, accurately exposed pictures for both film and video. Furthermore, these lamps incorporate the highly innovative P3 technology, developed by Philips. This allows the lamps to be used at higher temperatures, which extends overall lifetime and consistency of their high-quality light output. P3 technology also allows the lamp to be used in any burning position and enables more compact designs of fixtures. In addition, the very wide choice of dimensions and power ratings opens new levels of creative freedom for the luminaire designer.

### Benefits

- Studio/film: High lumen output
- Studio/film: Enables use at higher temperatures in any burning position. Longer lifetime, fewer early failures, consistent performance over time.
- Video: Makes attractive, accurately exposed pictures possible

### Features

- Studio/film: all lamps have a correlated color temperature of 3200K and P3 technology
- Video: high constant light output and color temperature

### Application

- Studio/film: Studio, film, theater and disco lighting
- Video: Portable film and video lights, reproduction cameras

# Halogen High Voltage SE (Film/Studio)

## Versions



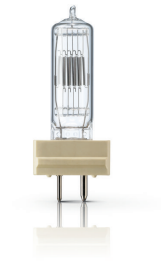
G38



GX9.5



G22



GY16

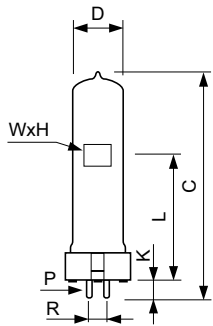


GX9.5 with reflector



GY9.5

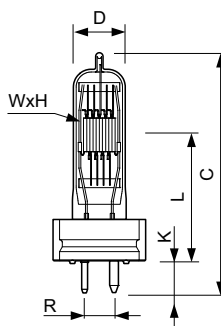
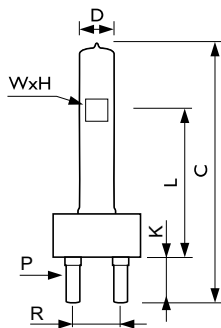
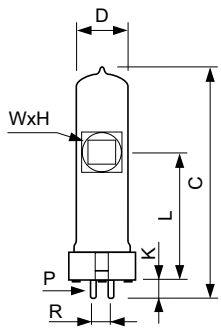
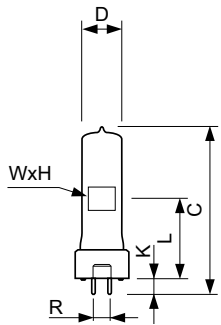
## Dimensional drawing



Product	D (max)	H	W	L	C (max)	P (max)	P (min)	R	K (max)	K (min)
1200W GX9.5 120V 1CT/10	30.5 mm	14.5 mm	11 mm	55 mm	110 mm	3.25 mm	3.10 mm	9.53 mm	9.2 mm	8.4 mm
1000W GX9.5 230V 1CT/10	30.5 mm	14.5 mm	11 mm	55 mm	110 mm	3.25 mm	3.10 mm	9.53 mm	9.2 mm	8.4 mm
6993P 650W GX9.5 230V 1CT/10	22 mm	10 mm	10 mm	55 mm	110 mm	3.25 mm	3.10 mm	9.53 mm	9.2 mm	8.4 mm
6995P 1000W GX9.5 230V 1CT/10	23 mm	14.5 mm	11 mm	55 mm	110 mm	3.25 mm	3.10 mm	9.53 mm	9.2 mm	8.4 mm

# Halogen High Voltage SE (Film/Studio)

## Dimensional drawing



Product	D (max)	H	W	L	C (max)	R	K (max)	K	K (min)
6638P 650W	22 mm	12	11	46.5	90 mm	9.53	8.6 mm	7.7	7.0 mm
GY9.5 240V		mm	mm	mm		mm		mm	
1CT/10									
6638P 650W	22 mm	12	11	46.5	90 mm	9.53	8.6 mm	7.7	7.0 mm
GY9.5 230V		mm	mm	mm		mm		mm	
1CT/10									

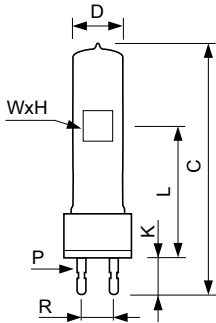
Product	D (max)	H	W	L	C (max)	P (max)	P (min)	R	K (max)	K (min)
6984P	23 mm	13	15.5	55	110	3.25	3.10	9.53	9.2 mm	8.4
1000W		mm	mm	mm	mm	mm	mm	mm		mm
GX9.5										
230V										
1CT/10										

Product	D (max)	H	W	L	C (max)	P (max)	P (min)	R	K (max)
6994Z	40 mm	18.5	17	127	210 mm	11.23	10.97	38.1	23.96
2000W G38		mm	mm	mm		mm	mm	mm	mm
240V 1CT/10									
6963Z	62 mm	28.5	26	165	280 mm	11.23	10.97	38.1	23.96
5000W G38		mm	mm	mm		mm	mm	mm	mm
240V UNP/1									

Product	D (max)	H	W	L	C (max)	R	K (max)	K (min)
6994P 2000W	29 mm	18.5	17 mm	70 mm	145 mm	15.87	17 mm	15.4 mm
GY16 230V		mm				mm		
1CT/10								

# Halogen High Voltage SE (Film/Studio)

## Dimensional drawing



Product	D (max)	H	W	L	C (max)	P (max)	P (min)	R	K (max)	K (min)
6995Z	28 mm	14.5	11	63.5	140	6.40	6.30	22.22	26.54	24.89
1000W		mm	mm	mm	mm	mm	mm	mm	mm	mm
G22 240V										
1CT/10										

### Controls and Dimming

Dimmable	Yes
----------	-----

### General Information

Main Application	Entertainment
------------------	---------------

### Light Technical

Correlated Color Temperature (Nom)	3200 K
------------------------------------	--------

### Mechanical and Housing

Filament Shape	Bi-Plane
----------------	----------

## Operating and Electrical

Order Code	Full Product Name	Voltage (Nom)	Rapid Acting HBC Fuse	Power (Rated) (Nom)
923865945524	6963Z 5000W G38 240V UNP/1	240 V	25 V	5000 W
923891145548	6994Z 2000W G38 240V 1CT/10	240 V	16 V	2000 W
923884642928	6995P 1000W GX9.5 230V 1CT/10	230 V	6.3 V	1000 W
923890342928	6993P 650W GX9.5 230V 1CT/10	230 V	4 V	650 W
924505144234	1000W GX9.5 230V 1CT/10	230 V	6.3 V	1000 W
924521536328	1200W GX9.5 120V 1CT/10	120 V	16 V	1200 W

Order Code	Full Product Name	Voltage (Nom)	Rapid Acting HBC Fuse	Power (Rated) (Nom)
923884745528	6995Z 1000W G22 240V 1CT/10	240 V	6.3 V	1000 W
923891042948	6994P 2000W GY16 230V 1CT/10	230 V	16 V	2000 W
923891342928	6984P 1000W GX9.5 230V 1CT/10	230 V	6.3 V	1000 W
924501342928	6638P 650W GY9.5 230V 1CT/10	230 V	4 V	650 W
924501345528	6638P 650W GY9.5 240V 1CT/10	240 V	4 V	650 W

## General Information

Order Code	Full Product Name	Ansi Code	Cap-Base	LIF Code	Life To 50% Failures (Nom)	Operating Position	Phillips Code	System Description
923865945524	6963Z 5000W G38 240V UNP/1	-	G38	CP/85 (CP/29)	420 h	UNIVERSAL	6963Z	P3 Technology
923891145548	6994Z 2000W G38 240V 1CT/10	FKK-FKP	G38	CP/73 (CP/41)	480 h	S90	6994Z	-
923884642928	6995P 1000W GX9.5 230V 1CT/10	FVA	GX9.5	CP/70 (CP/24)	240 h	UNIVERSAL	6995P	P3 Technology
923890342928	6993P 650W GX9.5 230V 1CT/10	FVC	GX9.5	CP/67 (CP/23)	120 h	S90	6993P	P3 Technology
924505144234	1000W GX9.5 230V 1CT/10	-	GX9.5	-	200 h	UNIVERSAL	NA	-
924521536328	1200W GX9.5 120V 1CT/10	-	GX9.5	-	150 h	UNIVERSAL	NA	-
923884745528	6995Z 1000W G22 240V 1CT/10	FKJ	G22	CP/71 (CP/40)	240 h	UNIVERSAL	6995Z	P3 Technology
923891042948	6994P 2000W GY16 230V 1CT/10	FTM	GY16	CP/72 (CP/43)	480 h	S90	6994P	-

## Halogen High Voltage SE (Film/Studio)

Order Code	Full Product Name	Ansi Code	Cap-Base	LIF Code	Life To 50% Failures (Nom)	Operating Position	Philips Code	System Description
923891342928	6984P 1000W GX9.5 230V 1CT/10	-	GX9.5	CP/63	180 h	UNIVERSAL	6984P	P3 Technology
924501342928	6638P 650W GY9.5 230V 1CT/10	FRL	GY9.5	CP/89	180 h	UNIVERSAL	6638P	P3 Technology
924501345528	6638P 650W GY9.5 240V 1CT/10	FRM	GY9.5	CP/89	180 h	UNIVERSAL	6638P	P3 Technology

### Light Technical

Order Code	Full Product Name	Luminous Flux (Rated) (Nom)
923865945524	6963Z 5000W G38 240V UNP/1	132500 lm
923891145548	6994Z 2000W G38 240V 1CT/10	50000 lm
923884642928	6995P 1000W GX9.5 230V 1CT/10	25000 lm
923890342928	6993P 650W GX9.5 230V 1CT/10	16500 lm
924505144234	1000W GX9.5 230V 1CT/10	25000 lm
924521536328	1200W GX9.5 120V 1CT/10	34200 lm

Order Code	Full Product Name	Luminous Flux (Rated) (Nom)
923884745528	6995Z 1000W G22 240V 1CT/10	25000 lm
923891042948	6994P 2000W GY16 230V 1CT/10	50000 lm
923891342928	6984P 1000W GX9.5 230V 1CT/10	22500 lm
924501342928	6638P 650W GY9.5 230V 1CT/10	16500 lm
924501345528	6638P 650W GY9.5 240V 1CT/10	16500 lm

### Mechanical and Housing

Order Code	Full Product Name	Bulb Finish
923865945524	6963Z 5000W G38 240V UNP/1	Clear
923891145548	6994Z 2000W G38 240V 1CT/10	Clear
923884642928	6995P 1000W GX9.5 230V 1CT/10	Clear
923890342928	6993P 650W GX9.5 230V 1CT/10	Clear
924505144234	1000W GX9.5 230V 1CT/10	Clear
924521536328	1200W GX9.5 120V 1CT/10	Clear

Order Code	Full Product Name	Bulb Finish
923884745528	6995Z 1000W G22 240V 1CT/10	Clear
923891042948	6994P 2000W GY16 230V 1CT/10	Clear
923891342928	6984P 1000W GX9.5 230V 1CT/10	Reflector
924501342928	6638P 650W GY9.5 230V 1CT/10	Clear
924501345528	6638P 650W GY9.5 240V 1CT/10	Clear

