



UVB Narrowband TL – The UV-B narrowband lamp of choice

UV-B Narrowband TL

Philips offers highly reliable T12 lamps with narrow waveband of between 305 and 315 nm which peaks at 311 nm. This makes these lamps suitable for various applications such as phototherapy, agriculture & curing.

Benefits

- Photo-sensitizing agent - free treatment

Features

- Emission range from 305-315 nm. Peak at 311 nm

Application

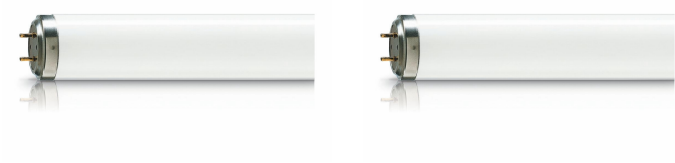
- Phototherapy
- Curing
- Agriculture

Warnings and Safety

- A lamp breaking is extremely unlikely to have any impact on your health. If a lamp breaks, ventilate the room for 30 minutes and remove the parts, preferably with gloves. Put them in a sealed plastic bag and take it to your local waste facilities for recycling. Do not use a vacuum cleaner.
- Photobiological Safety – IEC 62471 – Risk Group 3. WARNING – UV is emitted from these products.

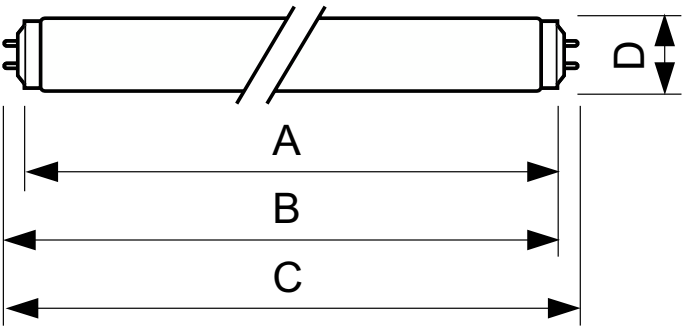
UV-B Narrowband TL

Versions

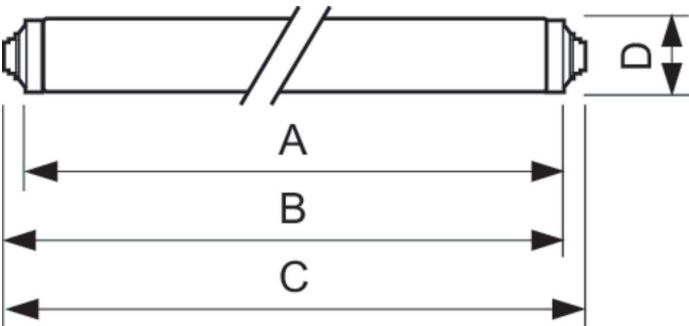


XPPR XUMTLRS G13

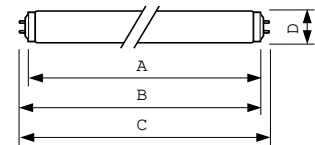
Dimensional drawing



Product	D (max)	A (max)	B (max)	B (min)	C (max)
TL 120W/01	40.5 mm	2,000 mm	2,007.1 mm	2,004.7 mm	2,014.2 mm



Product	D (max)	A (max)	B (max)	B (min)	C (max)
TL 100W/01 SLV/10	40.5 mm	1,763.8 mm	1,770.9 mm	1,768.5 mm	1,782.2 mm
TL F72T12 100W/01 UV-B	40.5 mm	1,755.7 mm	1,762.8 mm	1,760.4 mm	1,775.6 mm



Product	D (max)	A (max)	B (max)	B (min)	C (max)
TL 20W/01 RS SLV/25	40.5 mm	589.8 mm	596.9 mm	594.5 mm	604 mm
TL 40W/01 RS	40.5 mm	1,199.4 mm	1,206.5 mm	1,204.1 mm	1,213.6 mm

UV-B Narrowband TL

Light Technical	
Color Designation	Ultra Violet B
Color Code	01
Mechanical and Housing	
Bulb Shape	T38

General Information

Order Code	Full Product Name	Cap-Base
928010000130	TL 20W/01 RS SLV/25	G13
928011300130	TL 40W/01 RS	G13
928035200101	TL 120W/01	G13

Order Code	Full Product Name	Cap-Base
927978500130	TL F72T12 100W/01 UV-B	RDC
928034900130	TL 100W/01 SLV/10	R17d (RDC)

Operating and Electrical

Order Code	Full Product Name	Lamp	Voltage (Nom)	Power Consumption
		Current (Nom)		
928010000130	TL 20W/01 RS SLV/25	0.37 A	59 V	19.3 W
928011300130	TL 40W/01 RS	0.43 A	104 V	39 W
928035200101	TL 120W/01	1.110 A	127 V	116 W

Order Code	Full Product Name	Lamp	Voltage (Nom)	Power Consumption
		Current (Nom)		
927978500130	TL F72T12 100W/01 UV-B	0.97 A	126 V	100 W
928034900130	TL 100W/01 SLV/10	0.97 A	126 V	100 W

Approval and Application

Order Code	Full Product Name	Mercury (Hg) Content (Nom)
928010000130	TL 20W/01 RS SLV/25	5.5 mg
928011300130	TL 40W/01 RS	5.5 mg
928035200101	TL 120W/01	13.0 mg

Order Code	Full Product Name	Mercury (Hg) Content (Nom)
927978500130	TL F72T12 100W/01 UV-B	13.0 mg
928034900130	TL 100W/01 SLV/10	14.0 mg

