



# Philips TubeLine: linear tunnel lighting for optimized comfort and guidance

## TubeLine

For customers who demand a high level of visual comfort from their tunnel luminaires, fluorescent linear lighting has traditionally been the preferred choice. With excellent light uniformity on the road and walls, perfect visual guidance and high color rendering, linear lighting offers drivers superior lighting quality and safety. It also promises high system redundancy compared to point source lighting solutions. With Philips TubeLine tunnel luminaires, you can achieve the same lighting quality, but with all the added advantages of LED technology. TubeLine is a state-of-the-art tunnel luminaire that harnesses the latest LED technology with optimized dimensions and attractive pricing for a quick return on investment. Linear lighting has never been more achievable for tunnel lighting and underpass lighting on a limited budget.

### Benefits

- Optimal traffic flow due to increased visual comfort and safety compared to point-source lighting
- Economical alternative to fluorescent tunnel lighting
- High tunnel lighting availability: remote driver system
- Flexible, easy-to-install lighting system

## Features

- Linear luminaire in 1 or 2 meter lengths
- Driver not integrated: remote driver set-up
- Wide range of lumen packages: 3,000 to 30,000 lm
- Multiple mounting and connectivity options
- Compatible with tunnel controls from Philips and third parties
- Service tag: QR-based identification for maintenance, installation and spare part information

## Application

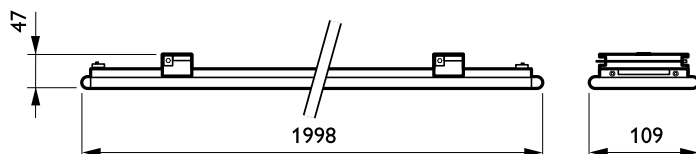
- Tunnel
- Underpass

## Versions



TubeLine BGP360

## Dimensional drawing



Product details

TubeLine\_BGP360-DP01.tif



TubeLine\_BGP360-DP02.tif



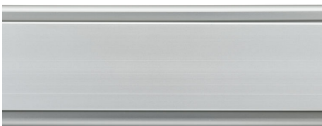
TubeLine\_BGP360-DP03.tif



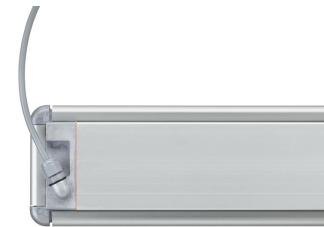
TubeLine\_BGP360-DP04.tif



TubeLine\_BGP360-DP05.tif



TubeLine\_BGP360-DP06.tif



TubeLine\_BGP360-DP07.tif

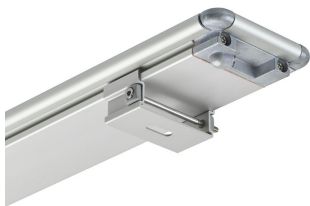


TubeLine\_BGP360-DP08.tif



## Product details

TubeLine\_BGP360\_ZGP360-  
DP09.tif



### General Information

CE mark	Yes
Driver included	No
Flammability mark	-
Gear	-
Light source replaceable	No
Number of gear units	1 unit
Product family code	BGP360

### Light Technical

Luminaire light beam spread	150°
Light source color	740 neutral white
Correlated Color Temperature (Nom)	4000 K
Optical cover type	Flat glass
Color rendering index (CRI)	≥80
Optic type outdoor	Distribution tunnel symmetrical
Standard tilt angle side entry	-
Standard tilt angle posttop	-
Upward light output ratio	0

### Controls and Dimming

Dimmable	No
----------	----

### Mechanical and Housing

Housing Color	Aluminum
---------------	----------

### Approval and Application

Mech. impact protection code	IK08
Ingress protection code	IP66
Surge Protection (Common/ Differential)	-

### General Information

Order Code	Full Product Name	Lamp family code
09429400	BGP360 LED30/740 DTS CFW C250W GP	LED30
09430000	BGP360 LED60/740 DTS CFW C250W GP	LED60
09432400	BGP360 LED120/740 DTS CFW C250W GP	LED120

## Light Technical

Order Code	Full Product Name	Number of light	
		Luminous Flux	sources
09429400	BGP360 LED30/740 DTS CFW C250W GP	2,700 lm	24
09430000	BGP360 LED60/740 DTS CFW C250W GP	5,400 lm	48

Order Code	Full Product Name	Number of light	
		Luminous Flux	sources
09432400	BGP360 LED120/740 DTS CFW C250W GP	10,800 lm	48

Operating and Electrical

Order Code	Full Product Name	Power Consumption
09429400	BGP360 LED30/740 DTS CFW C250W GP	18.8 W
09430000	BGP360 LED60/740 DTS CFW C250W GP	35.5 W

Order Code	Full Product Name	Power Consumption
09432400	BGP360 LED120/740 DTS CFW C250W GP	72 W

