

Stela+ gen2 – the revolution continues

Stela+ gen2 Round

Stela Round is at the forefront of LED technology in street lighting. The REVOLED cooling and light distribution concept enables tremendous energy savings and a corresponding reduction in CO2 emissions, whilst meeting current lighting standards. Excellent thermal management of the LEDs ensures a very long lifetime, eliminating the need for lamp replacement and resulting in a very attractive Total Cost of Ownership. The introduction of the latest-generation LED and programmable drivers and the possibility of employing Constant Light Output (CLO) in gen2 enable a further reduction in power consumption.

Benefits

- REVOLED technology for maximum efficiency
- Fit-and-forget solution – operates at low current
- Very attractive Total Cost of Ownership, ensuring sustainable investment

Features

- Guaranteed long lifetime: up to 100,000 hours (L-Tune tool)
- Low energy consumption and small carbon footprint
- Easy installation and maintenance

Application

- Traffic routes: parking areas
- Residential: streets, footpaths, squares/parks and playgrounds, parking areas
- City centers: side streets, squares and parks, pedestrian and shopping areas, public transport, footpaths, parking areas
- Large outdoor areas: industrial sites, harbors, airports, waterways, rail yards

Specifications

Type	BPP610
Light source	Integral LED-module

Power (+/-10%)	10 - 110 W depending on product
Luminous flux	900 - 12,350 lm

Stela+ gen2 Round

Luminaire efficacy	92 - 135 lm/W
Correlated Color	3000, 4000 or 5700 K
Temperature	
Color Rendering Index	Cool white: 70
	Neutral white: 75
	Warm white: 80
Maintenance of lumen output - L85/F10	100,000 hours at Ta = 25 °C
Driver failure rate	0,5 % per 1000 hours
Operating temperature range	-20 to +35 °C
Driver	Integrated programmable driver
Mains voltage	220-240 V / 50-60 Hz
Inrush current	40 W: 65 A at 100 ms
	75 W: 80 A at 150 ms
	100 W: 80 A at 150 ms
	150 W: 118 A at 140 ms
Dimming	Dimmable versions available with: 1-10V / DALI / DynaDimmer / SDU

Options	Including cable
	Class II version
	Wired for cell, Mini Photocell or NEMA socket
	Constant light output (CLO)
	10 kV surge protection
Optic	Wide road and wide area
Optical cover	Micro lens optic
Material	Housing: die-cast aluminum LM6-quality, non corrosive
	Spigot: die-cast aluminum LM6-quality
	Lens: PMMA
Color	Grey (Futura Gris 900 Sablé)
	Other RAL or AKZO Futura colors available on request
Connection	Screw connection block
Maintenance	Easy driver maintenance
Installation	Recommended mounting height: 4 - 5 m
	Post-top mounting: axial entry Ø 60 - 76 mm (76P)
	Windage area: 0.065 m²
Cable gland	M20
Accessories	Adapter for Ø 60mm post top

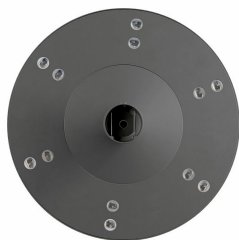
Versions

Stela Round+ gen2 BPP610/611
pedestrian luminaire

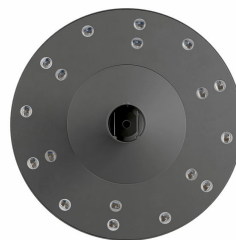


Product details

Stela+ gen2 Round with 12 LEDs



Stela+ gen2 Round with 18 LEDs



Stela+ gen2 Round

Product details

Stela+ gen2 Round with 24 LEDs



Stela+ gen2 Round with 36 LEDs



Stela+ gen2 Round with 48 LEDs



Top view



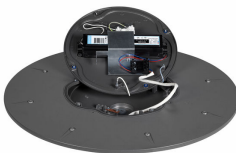
Gear tray in standard compartment with clip



Standard electronic driver for all versions



Special 75 and 150 W driver for 36 and 48 LEDs versions at current 700 mA



Stela+ gen2 Round

Approval and Application

Mech. impact protection code	IK10
------------------------------	------

General Information

Luminaire light beam spread	154° x 118°
CE mark	CE mark
Light source color	Neutral white
Optical cover/lens type	Polymethyl methacrylate bowl/cover
Driver included	Yes
ENEC mark	-
Flammability mark	-
Light source replaceable	No
Number of gear units	1 unit
Optic type	Wide road optic for S-class

Initial Performance (IEC Compliant)

Init. Corr. Color Temperature	4000 K
Init. Color Rendering Index	≥70

Light Technical

Standard tilt angle side entry	-
Standard tilt angle posttop	0°
Upward light output ratio	0

Mechanical and Housing

Color	Gray
-------	------

Application Conditions

Order Code	Full Product Name	Maximum dim level
912300025955	BPP610 1450/NW PSU WRN CLO 60P L20	-
912300025956	BPP610 2200/NW PSU WRN CLO 60P L20	-
912300026476	BPP611 24x /NW PSU II WRN AL GR SRG10 76	-
912300026477	BPP611 36x /NW PSU II WRN AL GR SRG10 76	-
912300026526	BPP611 GRN69/NW PSD WRN GR D9 SRG10 76-6	25%

Approval and Application

Order Code	Full Product Name	Surge Protection (Common/Differential)
912300025955	BPP610 1450/NW PSU WRN CLO 60P L20	Luminaire surge protection level until 6 kV differential mode and 6 kV common mode
912300025956	BPP610 2200/NW PSU WRN CLO 60P L20	Luminaire surge protection level until 6 kV differential mode and 6 kV common mode
912300026476	BPP611 24x /NW PSU II WRN AL GR SRG10 76	Luminaire surge protection level until 10 kV differential mode and 10 kV common mode

Order Code	Full Product Name	Surge Protection (Common/Differential)
912300026477	BPP611 36x /NW PSU II WRN AL GR SRG10 76	Luminaire surge protection level until 10 kV differential mode and 10 kV common mode
912300026526	BPP611 GRN69/NW PSD WRN GR D9 SRG10 76-6	Luminaire surge protection level until 10 kV differential mode and 10 kV common mode

Controls and Dimming

Order Code	Full Product Name	Dimmable
912300025955	BPP610 1450/NW PSU WRN CLO 60P L20	No
912300025956	BPP610 2200/NW PSU WRN CLO 60P L20	No
912300026476	BPP611 24x /NW PSU II WRN AL GR SRG10 76	No

Order Code	Full Product Name	Dimmable
912300026477	BPP611 36x /NW PSU II WRN AL GR SRG10 76	No
912300026526	BPP611 GRN69/NW PSD WRN GR D9 SRG10 76-6	Yes

General Information (1/2)

Stela+ gen2 Round

Order Code	Full Product Name	Color	Luminaire		
		choice	Coating	Finish	fixation bolts
912300025955	BPP610 1450/NW PSU	Gray Gris	Single layer	Matte	Length 20 mm
	WRN CLO 60P L20	900 Sablé	powder coating		
912300025956	BPP610 2200/NW PSU	Gray Gris	Single layer	Matte	Length 20 mm
	WRN CLO 60P L20	900 Sablé	powder coating		
912300026476	BPP611 24x /NW PSU II	-	-	-	-
	WRN AL GR SRG10 76				

Order Code	Full Product Name	Color	Luminaire		
		choice	Coating	Finish	fixation bolts
912300026477	BPP611 36x /NW PSU II	-	-	-	-
	WRN AL GR SRG10 76				
912300026526	BPP611 GRN69/NW PSD	-	Single layer	Matte	-
	WRN GR D9 SRG10 76-6		powder coating		

General Information (2/2)

Order Code	Full Product Name	Lamp family	Number of	Product
		code	light sources	Family Code
912300025955	BPP610 1450/NW PSU WRN CLO 60P L20	XP-G2	12 pcs	BPP610
912300025956	BPP610 2200/NW PSU WRN CLO 60P L20	XP-G2	18 pcs	BPP610
912300026476	BPP611 24x /NW PSU II WRN AL GR SRG10 76	XP-G2	-	BPP611

Order Code	Full Product Name	Lamp family	Number of	Product
		code	light sources	Family Code
912300026477	BPP611 36x /NW PSU II WRN AL GR SRG10 76	XP-G2	-	BPP611
912300026526	BPP611 GRN69/NW PSD WRN GR D9 SRG10 76-6	GRN69	-	BPP611

Initial Performance (IEC Compliant)

Order Code	Full Product Name	Initial luminous flux
912300025955	BPP610 1450/NW PSU WRN CLO 60P L20	1305 lm
912300025956	BPP610 2200/NW PSU WRN CLO 60P L20	1980 lm
912300026476	BPP611 24x /NW PSU II WRN AL GR SRG10 76	3200 lm

Order Code	Full Product Name	Initial luminous flux
912300026477	BPP611 36x /NW PSU II WRN AL GR SRG10 76	5000 lm
912300026526	BPP611 GRN69/NW PSD WRN GR D9 SRG10 76-6	6900 lm

Light Technical

Order Code	Full Product Name	Light source flux
912300025955	BPP610 1450/NW PSU WRN CLO 60P L20	1450 lm
912300025956	BPP610 2200/NW PSU WRN CLO 60P L20	2200 lm
912300026476	BPP611 24x /NW PSU II WRN AL GR SRG10 76	-

Order Code	Full Product Name	Light source flux
912300026477	BPP611 36x /NW PSU II WRN AL GR SRG10 76	-
912300026526	BPP611 GRN69/NW PSD WRN GR D9 SRG10 76-6	-

