



QVF LED – compact and economical floodlight

QVF LED

The QVF LED range of compact general-purpose floodlights are designed as an economical replacement for traditional halogen-lamp floodlights. The combination of high-power LEDs and a high-reflectivity optic ensures excellent light output for down- or uplighting applications. The floodlights' LED technology enables substantial energy and maintenance savings. A universal mounting bracket allows wall or surface mounting, with the possibility of tilting upwards or downwards. QVF LED floodlights can also be equipped with a combined presence/daylight sensor.

Benefits

- Reliable thermal design
- Protected against voltage surges caused by lightning
- High safety

Features

- Available in three compact versions
- Robust and durable construction
- IP65 rating
- 4 kV surge-protected
- Enhanced safety features
- Pre-wired with mains cable

Application

- Architecture and landscape lighting
- Billboard and advertising lighting
- Security, amenity and parking area lighting

Specifications

QVF LED

Type	BVP115 (small version, with or without movement detection unit) BVP116 (medium version, with or without movement detection unit) BVP117 (large version, with or without movement detection unit)
Light source	Integral LED-module
Power	BVP115: 11 W BVP116: 35 W BVP117: 54 W
Beam angle	100 x 120°
Luminous flux	BVP115: 760 lm BVP116: 2500 lm BVP117: 4050 lm
Luminaire efficacy	BVP115: 70 lm/W BVP116: 70 lm/W BVP117: 75 lm/W
Correlated Color Temperature	4000 K
Color Rendering Index	70
Maintenance of lumen output - L80	25,000 hours at 25 °C

Operating temperature range	Floodlight: -20 to +40 °C MDU (movement detection unit): -10 to +40 °C
Driver	Integrated
Mains voltage	220-240 V AC / 50-60 Hz
Inrush current	20 A at 100 µs
Optic	Wide beam
Optical cover	Front glass, transparent
Material	Housing: die-cast aluminum, painted Cover: glass, thermally hardened, 4 mm thick Reflector: anodized aluminum
Color	Grey aluminum, RAL9007
Connection	Prewired with H05RN-F-type cable 3 x 1 mm, length: 30 cm
Installation	Wall or surface mounting Max adjustment from the horizontal: -90 to +90° Max adjustment from the horizontal: -45 to +90° (MDU versions) Max vertical aiming: -180 to +180° Max SCx: 0.08 m

Versions

QVF LED BVP115 flood-lighting luminaire



QVF LED BVP116 flood-lighting luminaire



QVF LED BVP117 flood-lighting luminaire



QVF LED BVP115 flood-lighting luminaire with motion detection unit



QVF LED

Versions

QVF LED BVP116 flood-lighting
luminaire with motion detection unit



QVF LED BVP117 flood-lighting
luminaire with motion detection unit



Product details

Front view



Back view



Side view



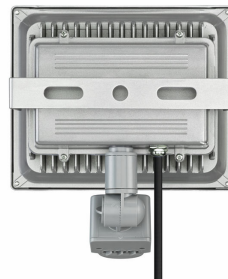
Rear view



Front view



Back view



QVF LED

Product details



Side view



Rear view

Approval and Application

Mech. impact protection code	IK07
Surge Protection (Common/Differential)	4/4 kV

Controls and Dimming

Dimmable	No
----------	----

General Information

Luminaire light beam spread	100° x 120°
Supply cable type	Cable type H05RN (NWPK) without plug 3 poles cross- section 1mm ²
CE mark	CE mark
Light source color	740 neutral white
Optical cover/lens type	Glass
Driver included	Yes
ENEC mark	-
Flammability mark	-
Glow-wire test	Temperature 850 °C, duration 5 s
Light source replaceable	No
Number of gear units	1 unit
Number of light sources	1 pc
Optic type	Wide beam

Initial Performance (IEC Compliant)

Init. Corr. Color Temperature	4000 K
Init. Color Rendering Index	70

Light Technical

Standard tilt angle side entry	0°
Standard tilt angle posttop	0°
Upward light output ratio	0

Mechanical and Housing

Color	Aluminum
-------	----------

Operating and Electrical

Order Code	Full Product Name	Driver current
910503910064	BVP115 LED8/740 WB	320 mA
910503910065	BVP116 LED25/740 WB	1000 mA
910503910066	BVP117 LED41/740 WB	1600 mA
910503910067	BVP115 LED8/740 WB MDU	320 mA
910503910068	BVP116 LED25/740 WB MDU	1000 mA
910503910069	BVP117 LED41/740 WB MDU	1600 mA

General Information

QVF LED

Order Code	Full Product Name	Lamp family code
910503910064	BVP115 LED8/740 WB	LED8
910503910065	BVP116 LED25/740 WB	LED25
910503910066	BVP117 LED41/740 WB	LED41

Order Code	Full Product Name	Lamp family code
910503910067	BVP115 LED8/740 WB MDU	LED8
910503910068	BVP116 LED25/740 WB MDU	LED25
910503910069	BVP117 LED41/740 WB MDU	LED41

Initial Performance (IEC Compliant)

Order Code	Full Product Name	Initial luminous flux
910503910064	BVP115 LED8/740 WB	760 lm
910503910065	BVP116 LED25/740 WB	2500 lm
910503910066	BVP117 LED41/740 WB	4050 lm

Order Code	Full Product Name	Initial luminous flux
910503910067	BVP115 LED8/740 WB MDU	760 lm
910503910068	BVP116 LED25/740 WB MDU	2500 lm
910503910069	BVP117 LED41/740 WB MDU	4050 lm

