



# SmartBalance recessed – combining performance with smart design

## SmartBalance, recessed

Many people are keen to apply recessed luminaires with a surface of light as an alternative to louver-type solutions. At the same time they expect the luminaires to be office norm-compliant as well as highly energy-efficient. Meeting all relevant office norms, SmartBalance recessed is the next step in surface-of-light recessed luminaires for the specification market. Thanks to state-of-the-art LED technology it not only offers increased energy efficiency compared with fluorescent, but is also visually appealing without being intrusive. For those looking for an exciting design element there are versions with inner masking. SmartBalance is also available in surface-mounted, suspended and free floor-standing versions.

### Benefits

- Operational cost savings, including 40% saving on energy cost
- Appealing, smooth surface-of-light solution
- Office norm-compliant

### Features

- Energy efficacy up to 108 lm/W (depending on type)
- UGR up to 18 / L65 up to < 2300 cd/m<sup>2</sup> (depending on type)
- Offers different geometries and ways of mounting
- Number of options to meet the needs of the specification business, e.g. DALI control and emergency lighting

## SmartBalance, recessed

### Application

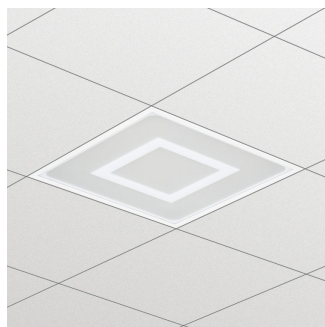
- Offices (open-plan, meeting rooms, cell offices, circulation areas)
- Healthcare
- Hospitality

### Specifications

<b>Type</b>	RC480B (module size 600 x 600 and 300 x 1200 mm version) RC482B (module size 625 x 625 and 310 x 1250 mm version)
<b>Ceiling type</b>	Exposed T-bar ceiling Symmetrical concealed T-bar ceiling Plaster (board) ceiling
<b>Ceiling grid</b>	Module size in length: 600 mm Module size in length: 625 mm Module size in length: 1200 mm Module size in length: 1250 mm
<b>Light source</b>	Non-replaceable LED module
<b>Power</b>	29 to 40 W (depending on type)
<b>Beam angle</b>	90°
<b>Luminous flux</b>	3500 or 4200 lm
<b>Correlated Color</b>	3000 or 4000 K
<b>Temperature</b>	
<b>Color Rendering Index</b>	> 80
<b>Lumen maintenance at median useful life* 50000 h</b>	L80
<b>Control gear failure rate at median useful life 50000 h</b>	5%
<b>Performance Ambient Temperature Tq</b>	+25 °C

<b>Operating temperature range</b>	+10 to +40 °C
<b>Driver</b>	Built-in
<b>Mains voltage</b>	220-240 V / 50-60 Hz
<b>Dimming</b>	DALI dimmable
<b>Options</b>	Acrylate micro-lens optic without (AC-MLO) or with (AC-MLO-R) innermasking, also referred to as "MK" Emergency lighting (integrated): 1 hour (EL1), 3 hours (EL3) ActiLume DALI gen2 (ACL)
<b>Material</b>	Housing: plastic or zinc-coated steel Rim: post lacquered Optics: acrylaat
<b>Color</b>	White (WH) Silver grey (SI)
<b>Maintenance</b>	Optical module sealed for file; no internal cleaning required
<b>Installation</b>	Exposed ceilings: in lay, no brackets needed Concealed ceilings: with bracket (reach 20-40 or 60 mm) Plaster (board) ceiling: with bracket (reach 20-40 or 60 mm)
<b>Accessories</b>	Bracket ZBS460 SMB (4 pcs) included for concealed and plaster (board) ceiling versions

### Versions



SmartBalance recessed RC480B LED luminaire with inner masking, module size 600 (concealed profile ceiling version)



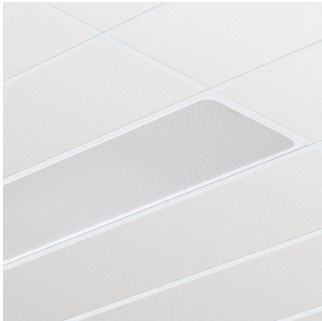
SmartBalance recessed RC480B LED luminaire, module size 600 (visible profile ceiling version)

# SmartBalance, recessed

## Versions



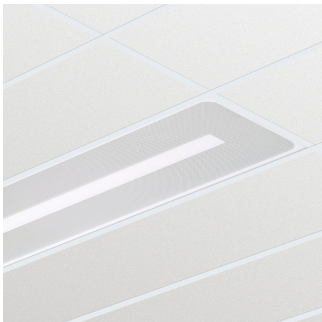
SmartBalance recessed RC480B LED luminaire with ActiLume, module size 600 (visible profile ceiling version)



SmartBalance recessed RC480B LED luminaire, module size 300x1200 (visible profile ceiling version)



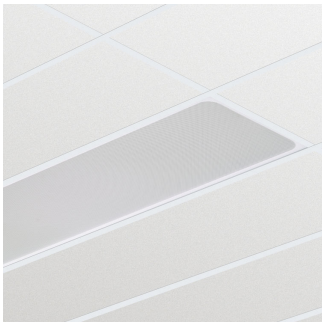
SmartBalance recessed RC480B LED luminaire with inner masking, module size 600 (visible profile ceiling version)



SmartBalance recessed RC480B LED luminaire with inner masking, module size 300x1200 (visible profile ceiling version)



SmartBalance recessed RC482B LED luminaire, module size 625 (visible profile ceiling version)



SmartBalance recessed RC482B LED luminaire, module size 312.5x1250 (visible profile ceiling version)



SmartBalance recessed RC482B LED luminaire with inner masking, module size 625 (visible profile ceiling version)



SmartBalance recessed RC480B LED luminaire, module size 600 (concealed profile ceiling version)

SmartBalance, recessed

Versions



SmartBalance recessed RC482B LED luminaire, module size 625 (concealed profile ceiling version)

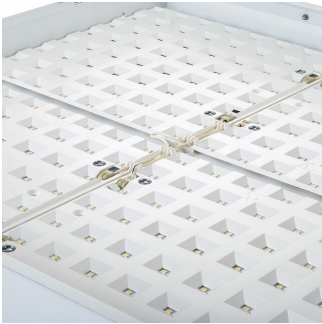
Product details



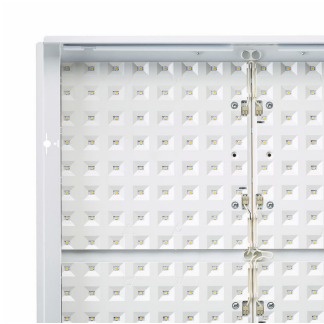
SmartBalance features rounded outer masking and a slim rim design



Inner and outer masking (AC-MLO-R)



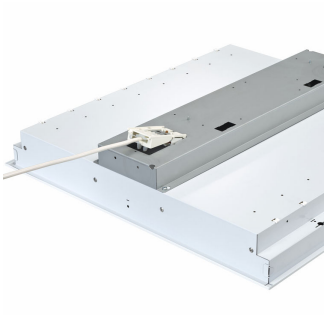
Smart LED reflector



Smart LED reflector – perpendicular view



Enables mounting in concealed grid ceiling (CPC)/plaster board ceiling (PCV)



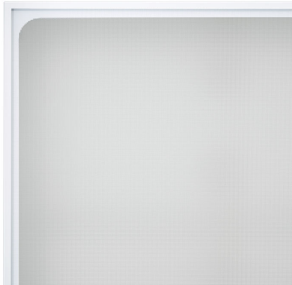
Connectors for ease of installation

SmartBalance, recessed

Product details



SmartBalance recessed RC482B LED luminaire with inner masking, module size 625 (concealed profile or plaster ceiling version)



SmartBalance features rounded outer masking and a slim rim design



Outer masking only (AC-MLO)



SmartBalance recessed RC480B LED luminaire, module size 600 (visible profile ceiling version)



SmartBalance recessed RC480B LED luminaire with ActiLume, module size 600 (visible profile ceiling version)



ActiLume DALI gen2 (ACL)



SmartBalance recessed RC480B LED luminaire, module size 300x1200 (visible profile ceiling version)



SmartBalance recessed RC480B LED luminaire with inner masking, module size 600 (visible profile ceiling version)

### Product details



SmartBalance recessed RC480B LED luminaire with inner masking, module size 300x1200 (visible profile ceiling version)



SmartBalance recessed RC482B LED luminaire, module size 625 (visible profile ceiling version)



SmartBalance recessed RC482B LED luminaire, module size 312.5x1250 (visible profile ceiling version)



SmartBalance recessed RC482B LED luminaire with inner masking, module size 625 (visible profile ceiling version)



SmartBalance recessed RC482B LED luminaire with inner masking, module size 312.5x1250 (visible profile ceiling version)



SmartBalance recessed RC480B LED luminaire, module size 600 (concealed profile or plaster ceiling version)



SmartBalance recessed RC482B LED luminaire, module size 625 (concealed profile or plaster ceiling version)

Application Conditions	
Ambient temperature range	+10 to +40 °C
Maximum dim level	1%
Approval and Application	
Mech. impact protection code	IK02
Ingress protection code	IP20
Controls and Dimming	
Dimmable	Yes
Operating and Electrical	
Input Voltage	220-240 V
General Information	
CE mark	CE mark
Protection class IEC	Safety class I (I)
Driver included	Yes
Emergency lighting	No
ENEC mark	ENEC plus mark
Flammability mark	F
Glow-wire test	650/5
Lamp family code	LED35S
Light source replaceable	No
Number of gear units	1 unit
Number of light sources	1
Optic type	No
UL mark	-
Initial Performance (IEC Compliant)	
Initial chromaticity	(0.38, 0.38) SDCM <3
Init. Corr. Color Temperature	4000 K
Init. Color Rendering Index	≥80
Initial luminous flux	3500 lm
Luminous flux tolerance	+/-10%
Mechanical and Housing	
Color	White

## Application Conditions

Order Code	Full Product Name	Suitable for random switching
27608100	RC480B LED35S/840 PSD W60L60 CPC MK PIP	Yes (relates to presence/ movement detection and daylight harvesting)
10298300	RC480B LED35S/840 PSD W60L60 VPC W	Yes (relates to presence/ movement detection and daylight harvesting)
10299000	RC480B LED35S/840 PSD W60L60 VPC PIP	Yes (relates to presence/ movement detection and daylight harvesting)
10300300	RC480B LED35S/840 PSD W60L60 VPC ACL W	Yes (relates to presence/ movement detection and daylight harvesting)
10302700	RC480B LED35S/840 PSD W30L120 VPC PIP	Yes (relates to presence/ movement detection and daylight harvesting)
10303400	RC480B LED35S/840 PSD W60L60 VPC MK PIP	Yes (relates to presence/ movement detection and daylight harvesting)
10304100	RC480B LED35S/840 PSD W30L120 VPC MK PIP	Yes (relates to presence/ movement detection and daylight harvesting)
10305800	RC482B LED35S/840 PSD W62L62 VPC PIP	No
10306500	RC482B LED35S/840 PSD W31L125 VPC PIP	No
10307200	RC482B LED35S/840 PSD W62L62 VPC MK PIP	Yes (relates to presence/ movement detection and daylight harvesting)
10309600	RC480B LED35S/840 PSD W60L60 CPC PIP	Yes (relates to presence/ movement detection and daylight harvesting)
10310200	RC482B LED35S/840 PSD W62L62 CPC PIP	Yes (relates to presence/ movement detection and daylight harvesting)

## General Information (1/2)

Order Code	Full Product Name	Cap-Base	Optical cover/lens type	Embedded control	Optical element
27608100	RC480B LED35S/840 PSD W60L60 CPC MK PIP	-	AC-MLO-R	No	MK
10298300	RC480B LED35S/840 PSD W60L60 VPC W	-	AC-MLO	No	No
10299000	RC480B LED35S/840 PSD W60L60 VPC PIP	-	AC-MLO	No	No
10300300	RC480B LED35S/840 PSD W60L60 VPC ACL W	-	AC-MLO	ACL	No

Order Code	Full Product Name	Cap-Base	Optical cover/lens type	Embedded control	Optical element
10302700	RC480B LED35S/840 PSD W30L120 VPC PIP	-	AC-MLO	No	No
10303400	RC480B LED35S/840 PSD W60L60 VPC MK PIP	-	AC-MLO-R	No	MK
10304100	RC480B LED35S/840 PSD W30L120 VPC MK PIP	-	AC-MLO-R	No	MK
10305800	RC482B LED35S/840 PSD W62L62 VPC PIP	-	AC-MLO	No	No



## SmartBalance, recessed

Order Code	Full Product Name	Cap-Base	Optical cover/lens type	Embedded control	Optical element
10306500	RC482B LED35S/840 PSD W31L125 VPC PIP	-	AC-MLO	No	No
10307200	RC482B LED35S/840 PSD W62L62 VPC MK PIP	-	AC-MLO-R	No	MK

Order Code	Full Product Name	Cap-Base	Optical cover/lens type	Embedded control	Optical element
10309600	RC480B LED35S/840 PSD W60L60 CPC PIP	-	AC-MLO	No	No
10310200	RC482B LED35S/840 PSD W62L62 CPC PIP	-	AC-MLO	No	No

### General Information (2/2)

Order Code	Full Product Name	Product Family Code
27608100	RC480B LED35S/840 PSD W60L60 CPC MK PIP	RC480B
10298300	RC480B LED35S/840 PSD W60L60 VPC W	RC480B
10299000	RC480B LED35S/840 PSD W60L60 VPC PIP	RC480B
10300300	RC480B LED35S/840 PSD W60L60 VPC ACL W	RC480B
10302700	RC480B LED35S/840 PSD W30L120 VPC PIP	RC480B
10303400	RC480B LED35S/840 PSD W60L60 VPC MK PIP	RC480B

Order Code	Full Product Name	Product Family Code
10304100	RC480B LED35S/840 PSD W30L120 VPC MK PIP	RC480B
10305800	RC482B LED35S/840 PSD W62L62 VPC PIP	RC482B
10306500	RC482B LED35S/840 PSD W31L125 VPC PIP	RC482B
10307200	RC482B LED35S/840 PSD W62L62 VPC MK PIP	RC482B
10309600	RC480B LED35S/840 PSD W60L60 CPC PIP	RC482B
10310200	RC482B LED35S/840 PSD W62L62 CPC PIP	RC482B

### Initial Performance (IEC Compliant)

Order Code	Full Product Name	Initial LED luminaire efficacy	Initial input power
27608100	RC480B LED35S/840 PSD W60L60 CPC MK PIP	101 lm/W	34.5 W
10298300	RC480B LED35S/840 PSD W60L60 VPC W	123 lm/W	28.5 W
10299000	RC480B LED35S/840 PSD W60L60 VPC PIP	123 lm/W	28.5 W
10300300	RC480B LED35S/840 PSD W60L60 VPC ACL W	119 lm/W	29.5 W
10302700	RC480B LED35S/840 PSD W30L120 VPC PIP	117 lm/W	30 W
10303400	RC480B LED35S/840 PSD W60L60 VPC MK PIP	108 lm/W	32.5 W

Order Code	Full Product Name	Initial LED luminaire efficacy	Initial input power
10304100	RC480B LED35S/840 PSD W30L120 VPC MK PIP	101 lm/W	34.5 W
10305800	RC482B LED35S/840 PSD W62L62 VPC PIP	123 lm/W	28.5 W
10306500	RC482B LED35S/840 PSD W31L125 VPC PIP	117 lm/W	30 W
10307200	RC482B LED35S/840 PSD W62L62 VPC MK PIP	108 lm/W	32.5 W
10309600	RC480B LED35S/840 PSD W60L60 CPC PIP	119 lm/W	29.5 W
10310200	RC482B LED35S/840 PSD W62L62 CPC PIP	119 lm/W	29.5 W

### Mechanical and Housing

Order Code	Full Product Name	Geometry
27608100	RC480B LED35S/840 PSD W60L60 CPC MK PIP	W60L60
10298300	RC480B LED35S/840 PSD W60L60 VPC W	W60L60
10299000	RC480B LED35S/840 PSD W60L60 VPC PIP	W60L60
10300300	RC480B LED35S/840 PSD W60L60 VPC ACL W	W60L60
10302700	RC480B LED35S/840 PSD W30L120 VPC PIP	W30L120
10303400	RC480B LED35S/840 PSD W60L60 VPC MK PIP	W60L60

Order Code	Full Product Name	Geometry
10304100	RC480B LED35S/840 PSD W30L120 VPC MK PIP	W30L120
10305800	RC482B LED35S/840 PSD W62L62 VPC PIP	W62L62
10306500	RC482B LED35S/840 PSD W31L125 VPC PIP	W31L125
10307200	RC482B LED35S/840 PSD W62L62 VPC MK PIP	W62L62
10309600	RC480B LED35S/840 PSD W60L60 CPC PIP	W60L60
10310200	RC482B LED35S/840 PSD W62L62 CPC PIP	W62L62



