



Color Graze EC Powercore – exterior cove, niche and detail illumination

ColorGraze EC Powercore

Some exterior architectural details require a soft-edged volume fill of light. Graze EC Powercore combines this output with the proven, durable design of the Graze Powercore product family and low power consumption.

Benefits

- Superior light quality, consistency and output thanks to Philips Color Kinetics Optibin and Chromasync technologies
- Simple installation and long run lengths enabled by Powercore technology
- Static and dynamic lighting effects can be designed, displayed and changed via Philips Color Kinetics controllers

Features

- Soft-edged light output for volume-fill applications thanks to diffuse cover lens
- Low power consumption is perfect for less demanding exterior applications
- Unparalleled control via adjustable dimming curves and transition speeds
- Superior output matching from fixture to fixture thanks to Optibin and Chromasync technologies

Application

- Illumination of exterior coves
- Illumination of exterior details (porte-cochères, mullions, balustrades, etc.)

ColorGraze EC Powercore

Versions

ColorGraze EC Powercore BCS468
architectural lighting fixture (RGB,
1219 mm)

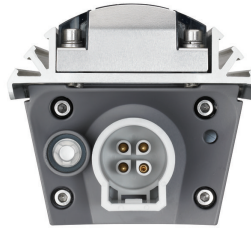


Product details

Graze MX QLX EC Connection In
Detail photo



Graze MX QLX EC Powercore
Connection Out Detail photo



OPDP_BCS468i_0005-Detail
photo



ColorGraze EC Powercore 4ft ALT 1
Detail Shot

