

# **eW Cove MX Powercore Precision Dimming – maximum- output linear LED fixture for cove, general and accent lighting**

## **eW Cove MX Powercore Precision Dimming**

With its superior light output, wide beam angle, and range of fixed colours and colour temperatures, eW Cove MX Powercore Precision Dimming can be used for accent lighting and indirect general illumination, as well as the full range of wall and ceiling cove applications. This fixture meets or exceeds the performance of comparable linear fluorescent strip cove lights while lowering installation, energy, and maintenance costs. eW Cove MX Powercore Precision Dimming offers environmentally conscious buyers a green, energy-efficient lighting solution without sacrificing quality or quantity of light. Integrated Powercore technology ensures rapid, efficient and accurate control of power output to the fixture directly from line voltage, eliminating the need for external power supplies.

### **Benefits**

- Maximum light output
- Multiple options for design and application flexibility
- Cost-effective, easy to install, and long lifetime

## eW Cove MX Powercore Precision Dimming

### Features

- Fixed white or solid-colour light output of up to 632 lumens per fixture; luminous efficacy of up to 53.1 lm/W
- Available in four colour temperatures, ranging from a warm 2700 K to a cool 4000 K, and four solid colours (red, green, blue, and amber).
- End-to-end locking power connectors can make 180° turns; rotation in 10° increments through 170° for precise aiming and colour mixing
- Smooth dimming capability with many ELV-type dimmers
- Integrated Powercore technology

### Application

- Accent lighting
- Indirect general illumination

### Versions

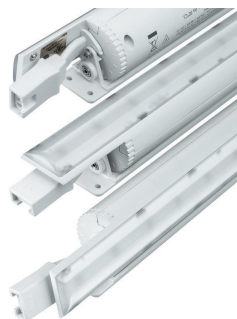


eW Cove MX Powercore  
BCX416/421, délka 300 mm



eW Cove MX Powercore BCX416,  
délka 1200 mm

### Product details



IPDP\_BCX410i\_0011-Detail photo



## eW Cove MX Powercore Precision Dimming

### Product details



IPDP\_BCX410i\_0031-Detail photo

