



# Experience the change, see the difference

## Calculite LED 4" square gen 3

Calculite 4" Square Gen3 features industry leading visual comfort, excellent uniform illumination over time, and patented installation flexibility.

### Benefits

- Maximize visual appeal by three beam spreads options to give the right distribution and light output
- Ultimate user comfort by providing 50 degree physical and 45 degree reflected cutoff, creating less brightness
- Uniform light and color consistency at an SDCM of 2
- Modular three piece design that makes servicing and upgrading convenient
- Installation efficiency accomplished by a tool-free install and quick connect technology

### Features

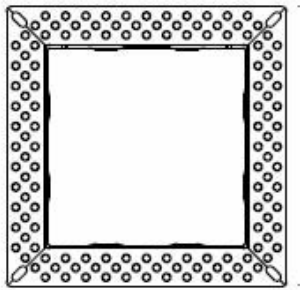
- L90 (90% lumen maintenance) up to 60,000 hrs. and efficacies as high as 115 lm/W
- Construction: Lowest plenum height with plug & play connector between frame and light engine
- Narrow, Medium, Wide beam options in all lumen packages
- Dimming options: Standard dimming to 1% for 0-10V, Lutron, and Dali
- Flange options available: Polished, white, or flangeless

## Calculite LED 4" square gen 3

### Application

- Residential
- Office
- Banks
- Hospitality
- Airports
- Fashion

### Versions



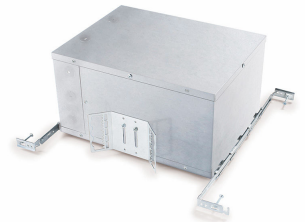
CA4SFT



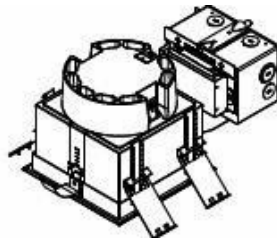
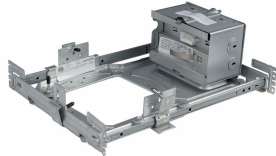
C4SDLNMCC



4SN



4SNLC



## Calculite LED 4" square gen 3

### Versions

