



# Design versatility

## LyteCaster LED Accent

LyteCaster LED Accent 3" is a versatile family designed for commercial and residential areas in both new construction and remodel applications. LyteCaster's shallow luminaire height and 3 part modular system provides for easy installation and upgradeability in any space.

### Benefits

- Modular light engine for easy future upgrades
- The family is available in a variety of round and square accent styles and finishes with efficacies ranging up to 80 lm/W
- Shallow luminaire height and 3 part modular system provides for easy installation and upgradeability in any space
- Configurations are Title 24 compliant and Energy Star certified
- LyteCaster with CRI 90 AccuRender: design versatility with all the options you desire

### Features

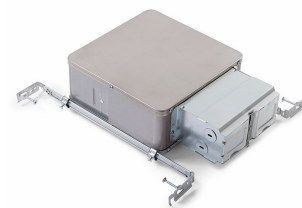
- The 3 1/2" shallow luminaire height saves plenum space without compromising the 60° physical and reflected cutoff
- CrispWhite is available in the 90 CRI 3000K combination
- 31 different trim options available

### Application

- Residential
- Hospitality

# LyteCaster LED Accent

## Versions



L3AE1

