

Unparalleled design integrity

Basic Track

For Basic 1-circuit track only. Includes 15-foot, 2-conductor cord and plug set with in-line switch. Capacity 7 amps at 120V. Not UL Listed.

Benefits

- Variety of mounting patterns, surface or stems
- "U" shaped conductor provides reliable contact with connectors
- Can be cut in the field

Features

- Single circuit track with a capacity of 20 amps at 120V per branch circuit
- Available in 2', 4' and 8' lengths
- White, black, and aluminum finishes

Application

- Fashion
- Food and Large Retailers
- Retail
- Hospitality

Basic Track

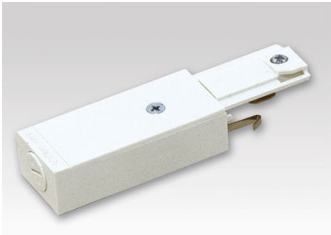
Versions



6001NBK



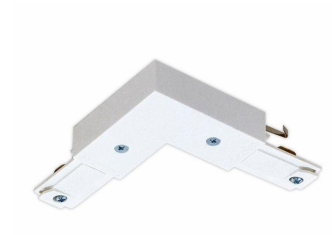
6046NBK



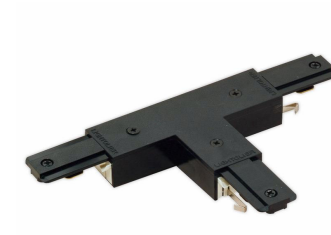
6048NBK



6049NBK



6050NWH



6054NBK



6063WH

