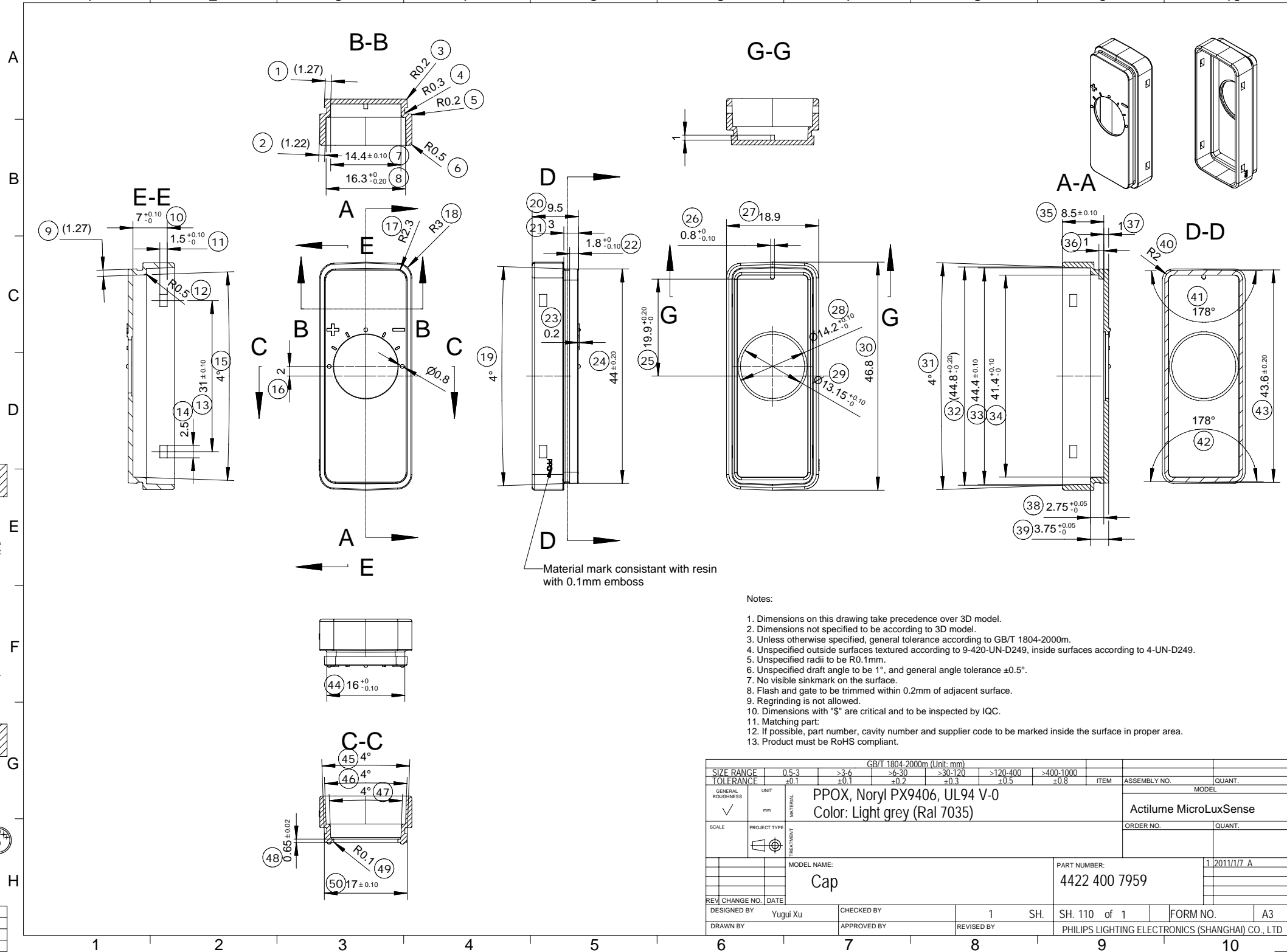


PHILIPS

Philips Lighting Electronics (Shanghai) Co., Ltd.
All rights reserved. No part is
permitted without the written consent of the copyright owner.



Notes:

1. Dimensions on this drawing take precedence over 3D model.
2. Dimensions not specified to be according to 3D model.
3. Unless otherwise specified, general tolerance according to GB/T 1804-2000m.
4. Unspecified outside surfaces textured according to 9-420-UN-D249, inside surfaces according to 4-UN-D249.
5. Unspecified draft angle to be 1°, and general angle tolerance ±0.5°.
6. Unspecified radii to be R0.1mm.
7. No visible sinkmark on the surface.
8. Flash and gate to be trimmed within 0.2mm of adjacent surface.
9. Regrinding is not allowed.
10. Dimensions with "\$" are critical and to be inspected by IQC.
11. Matching part.
12. If possible, part number, cavity number and supplier code to be marked inside the surface in proper area.
13. Product must be RoHS compliant.

GB/T 1804-2000m (Unit: mm)									
SIZE RANGE	0.5-3	>3-6	>6-30	>30-120	>120-400	>400-1000	ITEM	ASSEMBLY NO.	QUANT.
TOLERANCE	±0.1	±0.1	±0.2	±0.3	±0.5	±0.8			
GENERAL ROUGHNESS	UNIT	MATERIAL	PROJECT TYPE	PREVIEW	MODEL NAME:	PART NUMBER:	1	2011/17	A
✓	mm				PPOX, Noryl PX9406, UL94 V-0	4422 400 7959	SH. 110	of 1	FORM NO. A3
					Color: Light grey (Ral 7035)		REVISED BY		PHILIPS LIGHTING ELECTRONICS (SHANGHAI) CO., LTD
SCALE	PROJECT TYPE	PREVIEW	MODEL NAME:	PART NUMBER:	1	2011/17	SH. 110	of 1	FORM NO. A3
			Cap	4422 400 7959					
REV. CHANGE NO.	DATE	CHECKED BY	1	SH.	SH. 110	of 1	FORM NO.	A3	
DESIGNED BY	Yugui Xu	APPROVED BY							
DRAWN BY		REVISOR							